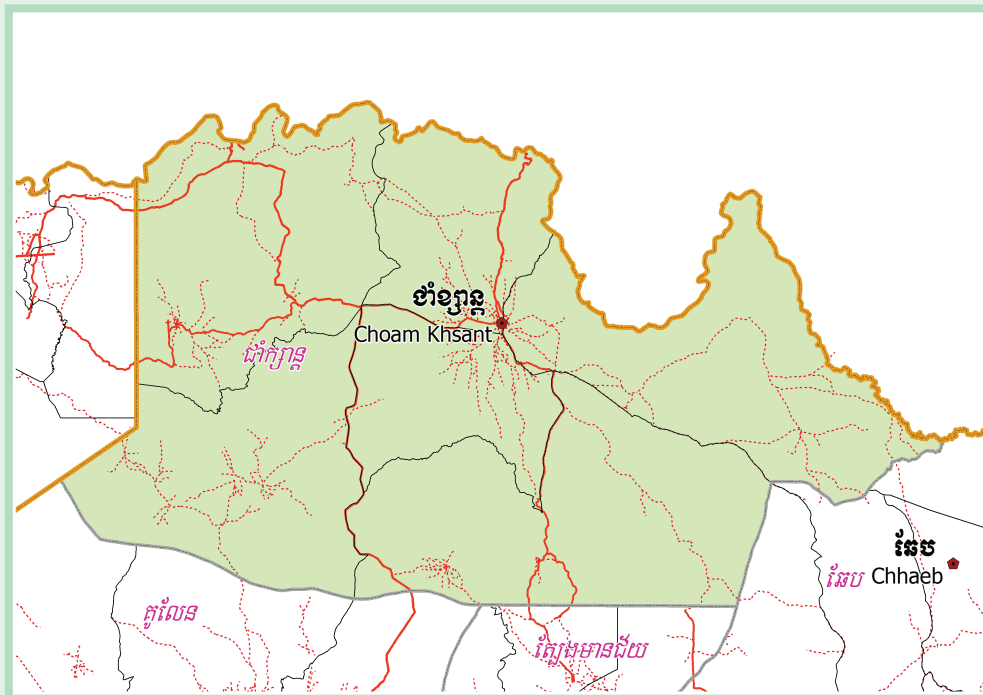


KINGDOM OF CAMBODIA
Nation Religion King



**National Committee for Sub-National
Democratic Development (NCDD)**



CHOAM KSANT DISTRICT DATA BOOK 2009

District Code Nr: 1303
Preah Vihear Province

October 2009

Choam Ksant District Data Book 2009

District Code Nr: 1303

Preah Vihear Province

Table of Contents

List of Abbreviations	i
Glossary.....	ii
Preface	vi
Introduction	vii
SECTION A: GEOGRAPHY	1
1 Administration and Infrastructure.....	3
2 Land Use and Natural Resources.....	5
3 Geography	7
3.1 Land Area	7
3.2 Distances between Offices	7
SECTION B: DISTRICT PROFILE	9
1 General Information	11
1.1 Population of the District.....	11
1.2 Occupations	12
1.3 Property	14
2 Infrastructure and Economy.....	16
2.1 Roads in meters over 3 years.....	16
2.2 Sewerage Pipes in meters over 3 years.....	16
2.3 Drainage and Bridges	16
2.4 Services in the District	16
2.5 Agriculture.....	17
3 Social Aspects	27
3.1 Education	27
3.2 Health.....	33
3.3 Water and Sanitation	35
3.4 Vulnerable groups.....	39
3.5 Migration	41
4 Natural Resources and Environment (NRE).....	43
4.1 Families involved with NRE issues over 3 years	43
4.2 Percentage of Families involved with Natural Resource issues, by Commune, for 2008	43
4.3 Percentage Houses with access to Garbage collection and Families affected by environmental Pollution, by Commune, for 2008	43
4.4 Percentage Families using chemical Fertilizer and chemical Pesticides, by Commune, for 2008 ..	43
5 Administration and Security	44

5.1	Birth Registration across 3 years.....	44
5.2	Number of unregistered Infants born in 2008, by Commune	44
5.3	Registered criminal Cases over 3 years	44
5.4	Registered criminal Cases per 10,000 people, by Commune, for 2008.....	44
5.5	Number of registered Land Disputes, by Commune, in 2008	44
6	Gender	45
6.1	Registered Domestic Violence over 3 years.....	45
6.2	Percentage of registered cases of Families experiencing domestic Violence, by Commune, in 2008	45
6.3	Women's involvement over 3 years.....	45
6.4	Percentage of Female Participants in Civil Society and of 18-60 year women with uncertain Jobs, by Commune, in 2008	46
6.5	Female-headed Households over 3 years.....	46
6.6	Percentage female-headed Households and with Children of less than 5 years old, by Commune, in 2008	46
7	Indigenous People in the District	47
7.1	Ethnic Minorities in the District over 3 years.....	47
7.2	Other Minorities in the District over 3 years.....	47
	SECTION C: PLANS AND PROJECTS	49
8	Priorities and Plans	51
8.1	Priorities of Commune Councils for 2009 in the District by Sector	51
8.2	Temporary Agreements by Commune, for 2009	54
8.3	Outputs, estimated and actual costs of C/S Fund Projects between 2005 and 2008, by Commune	68
8.4	Total Expenditure on C/S Fund Projects by sector and commune between 2005 and 2008.....	69
8.5	Actual 2009 C/S Fund projects by Commune	70
9	District level Projects from 2006 to 2009	71
9.1	District Initiative Infrastructure Projects from 2006 to 2009	71
9.2	District Initiative Service Projects from 2006 to 2009	72
9.3	Inter Commune Council Projects in 2008 and 2009	72
9.4	Other Projects in 2008 and 2009	72
	SECTION D: SERVICES AND ORGANIZATIONS	75
10	Infrastructure.....	77
10.1	Length of and Expenditure on Roads in 2008, by District	77
10.2	Scale of and Expenditure on Irrigation in 2008, by District.....	77
10.3	Power Supply in 2008, by District	77
11	Health Facilities.....	79

11.1 Health Facilities in the Province, by Operational District.....	79
11.2 Health Facilities and Staff in the province, by Operational District.....	80
11.3 Deliveries in 2007 in the Province, by Operational District.....	80
12 Education	81
12.1 Schools, Classes, Students, Staff, for for all levels, for 2007/2008 by District.....	81
12.2 Characteristics of Schools and School Principals for 2007/2008 by Commune	81
12.3 Enrolment by Level of Education, 2006/2007 by Commune	82
12.4 Enrolment by Level of Education, 2007/2008 by Commune	82
12.5 Aspects of Enrolment for 2007/2008 by Commune.....	82
12.6 School Buildings for all schools in the District for 2007/2008, by Commune	83
12.7 Conditions of Classrooms and Existence of Separate School Office and Library, by Commune	83
12.8 Community Participation and Financing across all schools in the District for 2007/2008 by Commune	83
12.9 Percentage Student Flow Rates and Graduation by level 2006/2007, by Commune	84
13 Staff and Resources at the District	85
13.1 District Councilors elected in 2009	85
13.2 Committees of the Council.....	85
13.3 Board of Governors.....	85
13.4 Offices under Sala Krong, Sala Srok and Sala Khan	86
13.5 Municipality/District/Khan line offices.....	86
13.6 Properties and Equipment of District Administration	86
13.7 Registered Revenue of the District Administration in 2008	87
13.8 Services in the District	87
13.9 Civil Society Organizations active in the District.....	88
13.10 Private Sector Organizations.....	89
SECTION E: POVERTY DATA	91
14 Data on Poverty	93
14.1 Predicted Poverty Rates for 2009, by commune	93
14.2 Poverty data from survey.....	93

List of Abbreviations

#	Number
AGR	Agriculture
BR	Birth Registration
C. Pilot	Piloted Commune
C/S	Commune / Sangkat
CBO	Community-Based Organization
CDB	Commune Database
CDPD	Commune Development and Planning Database
CIP	Commune Investment plan
CLTS	Community Led-Total Sanitation
Comm.	Commune
Com Cov	Commune Covered
CPA	Complementary Package of Activities
CPS	Community Preschool
CCWC	Commune Committees for Women and Children
DANIDA	Danish International Development Agency
DDLG	Democratic Development and Local Governance Project (EC-UNDP)
DFID	Department For International Development (UK)
DIP	District Initiative Project
DIS	District Information System
District PDRD	District Office of Rural Development
District WP	District Work Plan
DIW	District Integration Workshop
DoLA	Department of Local Administration
Dr	Doctor
DWRM	District Office of Water Resource and Meterology
ECD	Early Childhood education (part of PE)
EMIS	Education Management Information System
Event IC	Celebration of International Days
FDH	Former District Hospital
GTZ	German Society for Technical Cooperation (Gesellschaft für Technische Zusammenarbeit GmbH)
Ha	Hectare
HC	Health Center
HC (NB)	Health Center (no building)
HH	Headed Household
HSI	Intervention for Health
HP	Health Post
HW	Hand Washing
ICC	Inter Commune Council
IFAD	International Fund for Agricultural Development
IND	Industry
Inter-commune	Inter-Commune Project Management Committee or Inter-commune project
IO	International Organization
LASED	Land Allocation for Socio-Economic Development
LGCR	Local Governance for Children's Rights
M&E	Monitoring and Evaluation
MA	Medical Assistant
MoEYS	Ministry of Education, Youth and Sports
MoH	Ministry of Health

MoP	Ministry of Planning
MPA	Minimum Package of Activities
MW1	Primary Midwives
MW2	Secondary Midwives
n/a	Not available
NCD	National Contracts Database
NCDD	National Committee for Sub-National Democratic Development
NGO	Non-Governmental Organization
NRML	Natural Resources Management and Livelihood
NU1	Primary Nurse
NU2	Secondary Nurse
OD	Operational District
ODF	Open Defecation Free
Ope. Costs	Operational Costs
Others	Other Staff
PBW	Public Works
PDoEYS	Provincial Department of Education, Youth and Sport
PDRD	Provincial Department of Rural Development
PDWRM	Provincial Department of Water Resource and Meteorology
PE	Parenting Education
PHAST	Participatory Hygiene and Sanitation Transformation
PHD	Provincial Health Department
PID	Project Information Database
PMC	Project Management Committee
Pop 04-05	Population Covered 2004 or 2005
PSDD	Project to Support Democratic Development through Decentralization and Deconcentration
RRD	Rural Road Development
RH	Referral Hospital
RILGP	Rural Investment and Local Governance Project
RPRP	Rural Poverty Reduction Program
RuLIP	Rural Livelihoods Improvement Program
SIDA	Swedish International Development Cooperation Agency
SPPA	Senior Provincial Program Advisor
TBA	Traditional Birth Attendant
UNDP	United Nations Development Project
UNICEF	United Nations Children's Fund
Vil	Village
Vil Cov	Village Covered
VIL-HC	Distance from Village to Health Center
WASH	Water, Sanitation and Hygiene
WRM	Water Resource and Meteorology

Glossary

C/S Fund: The Commune/Sangkat Fund is established and managed by the Government of Cambodia to provide financial support for development projects and administrative costs of Commune/Sangkat Councils. The amount is determined as a percentage of the National Budget (for 2009: 2.8% over the 2008 budget) and is expected to increase gradually over the years. The total 2009 budget under this fund is \$ 27,643,902 (of which \$ 19,272,170 is for Development Projects and \$ 8,371,731 for Administration). Under the Rural Investment and Local Governance Project the World Bank currently reimburses the costs of development projects if these meet the Bank's criteria.

CDB: the Commune Data Base is a national database, compiled by the Ministry of Planning, on the basis of detailed questionnaires, completed at village and commune level, which are then sent to the Departments of Planning for data entry. The most recent round of data collection took place at the end of 2008 (and is reflected in the District Data Books). Commune, District and Provincial Profiles can be generated from this database and should be available from provincial Departments of Planning.

CDPD: the Commune Development and Planning Database is a database maintained by Departments of Planning and Ministry of Planning, recording proposed activities as determined and prioritized by Commune and Sangkat Councils; the Temporary Agreements between these councils and supporting agencies, as decided at District Integration Workshops and details on projects that actually take place at commune, district and provincial levels.

CIP: The Commune Investment Plan is a rolling three-year plan, developed and decided by the Commune or Sangkat Council. It sets priorities and identifies the projects proposed for the years to come.

Commune and Sangkat (C/S): the Communes (in rural areas) and Sangkats (in urban areas) are the lowest and smallest units of local government. Councils are elected directly, once in five years, for the 1417 Communes and 204 Sangkats. In the C/S there are 14,119 villages, which have Village Chiefs, but don't constitute a formal level of local government.

DIP: the District Initiative Project is jointly supported by the MDLF (Multi-Donor Livelihood Facility (supporting the NRM&L Program)) and PSDD. In 2009 it covers 106 districts, 60% of the total in the country, with a budget of \$ 3.2 million. It is focused on capacity development in planning, democratic development, public competitive procurement, financial management and service delivery.

DIS: The District Information System is a national database maintained by NCDD, recording resources, staff, revenue, infrastructure and equipment available in the 193 Districts and Khans throughout the country. The last update took place in July 2009.

District, Municipality and Khan constitutes the third level of Government in Cambodia. There are 159 rural Districts, 26 Municipalities and 8 Khans of Phnom Penh Capital. They all have Councils which were, for the first time, elected in May 2009, by the Commune/Sangkat Councilors. These councils have a mandate for 5 years.

DIW: District Integration Workshops are held between July and October, to bring Commune/Sangkat Councils, looking for support for their projects, together with the governmental and non-governmental agencies that may provide support.

ICC: Inter Communes Council projects are executed in 10 provinces under the Democratic and Decentralized Local Governance Project (DDLG). This five year project (2006-2010) is executed by Ministry of Interior and funded by the European Commission and UNDP. The project focuses on improving dialogue partnership and accountability; create a network of Commune Councils at the provincial and national level and support and contribute to local area development for poverty reduction. The work under the ICC component supports investments and services formulated through inter-commune dialogue and planning.

MEDiCAM: A non-profit and non-partisan membership organization for NGOs active in Cambodia's health sector. It is the primary networking agency for health-related NGOs.

NCDD: the National Committee for sub-National Democratic Development is the inter-ministerial body charged with the implementation of the Organic Law (a key legislative document, adopted in 2008, outlining the envisaged decentralization). NCDD also channels substantial financial assistance by a number of Development Partners, to projects and programs at various levels. This amounted to over \$ 91 million in 2008. More information at: www.ncdd.gov.kh. This website also provides access to reports, manuals, legal documents, details on projects and more.

OD: the Operational Districts are the districts as defined and used by the Ministry of Health. These do not coincide with the 193 (Administrative) Districts and Khans, as used by all other RGC agencies. The Operational Districts are usually larger, and so there are 77 Operational Districts against 193 administrative Districts and Khans. However they do fit within the boundaries of administrative provinces.

PID: The Project Information Database is the database maintained by NCDD at national and sub national level, to follow all aspects of projects by Commune and Sangkat Councils, including the C/S Fund projects

Provincial Investment Fund (PIF)

The Provincial Investment Fund is allocated to all Provinces and Municipalities according to a population based formula. Part of the fund is earmarked for support to planning activities of the Provincial / Municipal Department of Planning; and to gender mainstreaming activities of the Provincial Department of Women's Affairs. The remaining "un-earmarked PIF" is allocated by PRDC to sectoral technical departments against established criteria and in response to proposals with prioritisation taking into account: priorities formulated by the CS Councils and aggregated by District into District Priority Activities Matrices (DPAM); alignment with national planning and poverty alleviation criteria, complementarity with other planned activities; and performance of the Department concerned in implementation of activities in previous years. With this provisional allocation, the Department then programs activities through the District Integration Process. Finally, the agreed activities, plus support costs amounting to no more than 25% of the total, are included in a sub-contract signed between PRDC and the Department, pursuant to the overall PSDD contract signed between NCDD and PRDC. Total budget has been around \$ 2 million per year.

Province: the 23 Provinces and Phnom Penh Capital City represent the 2nd layer of government. They vary in size, from very small, like Kep (approx. 36,000 people) and Pailin (approx. 70,000 people), or large but with small populations, like Mondulkiri (over 60,000 people), and Ratanakiri (over 153,000) to densely populated and large, like Kampong Cham (over 1.7 million people) and Kandal (approx. 1.4 Million people).

PSDD: the Project to Support Democratic Development through Decentralization and Deconcentration is funded by DFID (UK), SIDA (Sweden) and UNDP and runs from 2006 till the end of 2010 (including a one year extension). Annual budgets range from \$ 11 million to over \$ 18 million. The project provides core technical support to NCDD and to the provinces, financial support to the C/S Fund, District Initiative, Provincial Investment Fund and capacity building support through training, studies and advisory services.

RILGP: The Rural Investment and Local Governance Project is a World Bank funded project that provides substantial support to C/S Fund projects and to developing the required infrastructure, policies, systems and skills. It started in 2003 with a Loan for \$ 22 million for 2003-2007 and was then extended with a Grant of \$ 36 million for the period of 2007-2010. Discussions about a possible RILGP 2 are taking place between RGC and the World Bank.

RPRP: the Rural Poverty Reduction Project is a seven year project from 2004 till 2010, funded by IFAD and UNDP and implemented through the Ministry of Agriculture, Forestry and Fishery, supported by the Ministry of Interior and facilitated by NCDD. The project is active in the provinces Prey Veng and Svay Rieng and focuses on 120,600 households below poverty line. The objective is poverty reduction with the active participation of the poor through improved livelihoods, Strengthened capacity, Sustainable farming systems and natural resource management, new and/or rehabilitated infrastructure development, increase accessibly to technology, services and markets for their economic and social development.

RULIP: the Rural Livelihoods Improvement Project is implemented by the Ministry of Agriculture Forestry and Fisheries (MAFF)' Project Support Unit- PSU, with the NCDD playing the role of cooperating agency. Funded by IFAD and UNDP, the project will run till 2014. The target group consists of poor households who have little or even no land, few livestock or other assets and often many dependents. The main goal of the project is to directly or indirectly improve the livelihood systems, food security and incomes of a total of 33,900 rural poor, ethnic minority and female headed households in targeted village of Kratie, Preah Vihear and Ratanakiri provinces in a sustainable manner.

Seth Koma: The UNICEF funded Seth Koma program focuses on measurable action for children and women. During 2006 -2010 it is implemented in six provinces. Government and UNICEF pursue a set of inter-related goals, addressing critical stages of the life cycle of the child: a) Mothers have safe pregnancies and deliveries and healthy newborns; b) best possible start in life of infant; c) Children enter schools at the right age of six years; d) Children are protected from exploitation, abuse, violence, discrimination and other risks; and e) Youth and adolescents acquire life skills, express their views, participate in the decisions.

Preface

The Government of Cambodia attaches great importance to optimal use of scarce resources and to participatory planning and management at all levels. The Organic Law which was adopted in 2008 provides the legal context for further steps towards improving and decentralizing planning, management and monitoring, and towards greater accountability and transparency of institutions at sub-national levels.

The Government has established elected Councils at the sub-national levels, and we will progressively give them the responsibilities, together with the human and financial resources, to deliver a wide range of public services. They will be more democratic, more efficient, more transparent and accountable, better at addressing gender and other inequalities, and at fighting corruption. We recognize that development does not come from government alone; it needs the involvement of citizens, civil society and the private sector, and the new system will facilitate this.

A central element in this process is the availability of information on any aspect of development to all concerned parties. The newly elected Councillors at District and Khan level, line departments operating at these levels, but also NGOs, Development Partners, Commune Councillors and citizens throughout Cambodia need information on problems and requirements, resources and opportunities, services and agencies, plans and projects. They will need such information to better understand the present situation, set targets for the future, monitor progress, know what others are doing and to apply resources wisely and this is the reason the District Data books will be so valuable.

The District Data Books are a major step towards full transparency and towards informed planning and decision-making. They provide all available data at District, Khan, Commune and Sangkat level in easily accessible formats, in Khmer and English, through over 16,000 printed copies, CD-ROMs and the NCDD website.

This is the first time in Cambodia (and possibly in South East Asia) that such detailed information is made so widely available and NCDD should be commended for the hard work that has gone into this. We also thank the Ministry of Planning, which provided the detailed data of the Commune Data Base, the sectoral ministries and provincial authorities who contributed data and the Development Partners who provided financial support.

It is our sincere hope that the publication of the District Data Books will strengthen capacities, especially at district levels, for evidence-based development planning. We also hope that this information will deepen the understanding among Ministries, Provincial Authorities, Development Partners, NGOs and research agencies of the realities at commune and district levels.

We call upon all to use and distribute this information, complement or correct where appropriate and to contribute new data in the years to come.

Sar KHENG

Deputy Prime Minister, Minister of Interior and Chairman of NCDD

Introduction

Purpose

The purpose of the District Data Books is to bring together information on any aspect of life and development of Districts, Khans, Communes and Sangkat, together and make this widely available. The primary targets are the newly elected District Councilors, district level line departments, provincial agencies, Development Partners and NGOs operating at this level. They need detailed knowledge on current living conditions, natural resources, infrastructure, agriculture and other economic activities, current service levels, past and planned projects and available resources.

While much information exists on many of the above aspects, it is often hard to access that information and much is lost to reports, databases and statistics that are not widely shared. Data are often only available in one language and often out-of-date, and many reports cover only one sector or region.

We found that these problems are especially acute at the district level. Now that Districts are becoming a much more significant level of local government and development planning, there is an urgent need for wide-ranging data to be used for setting base-lines, planning and prioritizing, monitoring and learning.

Approach

We have attempted to identify and compile all available statistics, reports, maps and other data at district and/or commune level. From this we have selected information that is available for all or most districts, reasonably reliable and up-to-date, sufficiently detailed and of possible interest to development planners, decision makers, agencies and citizens.

The major sources of the information in these District Data Books are:

- a) The Commune Data Base information over the years 2006 to 2009 (the most recent data were collected late last 2008), as compiled by the Ministry of Planning
- b) Detailed information directly collected from the Ministry of Health, the Ministry of Education, Youth and Sports and (for maps) the Ministry of Land Management, Urban Planning and Construction
- c) The Project Information Database (PID) at NCDD (up-to-date)
- d) The Commune Development and Planning Database (CDPD) (up to date)
- e) The District Information System (DIS) (updated per Mid 2009)
- f) Direct data collection at provincial and district level on private sector, irrigation, roads, and electricity, through provincial agencies
- g) Medical data collected from MEDiCAM
- h) The ID Poor Project – for poverty data on a number of provinces and districts
- i) NCDD's work on predictive poverty rates
- j) Specific projects for outputs, plans and budgets (Seth Koma, RILGP, RPRP and ICC)

Limitations of the data

We are fully aware that the data we collected are not always complete, consistent or correct. While we have rejected information that was wrong or very incomplete, we decided not to aim for statistical and scientific perfection, but to include information that is useful, relevant

and comprehensive. We also accepted different sources for the same data as this may encourage discussion on the quality of the respective data.

We strongly encourage anyone who notes errors or incompleteness in these data to contact us and to share their data. We hope that the next round of producing such District Data Books can draw on wider sources and more complete data.

We encourage the District Administrations, who receive these data also in digital format, not only to use these for their planning and monitoring, but also to start correcting and updating these data and to share new data with NCDD for future use.

Contents

The information in the following pages is organized in five sections:

- a) **Geographical data:** this section provides maps on infrastructure and administration and on land use and natural resources management. These maps are also provided in large format to all Districts and Khans.
- b) **District Profile:** this presents wide ranging data, covering 2006 – 2009, at district and commune level, extracted from the Commune Data Base, but edited for better understanding.
- c) **Plans and Projects:** this section presents development priorities determined by Commune and Sangkat Councils, Temporary Agreements, outputs and expenditure of major projects at Commune and District level over 2006 – 2008 and plans and budgets for 2009.
- d) **Services and Organizations:** this section provides details on key infrastructure (roads, electricity, irrigation systems) and services in health and education at district and commune level. It also provides an inventory of resources at the District Administration, NGOs operating in the district and private sector agencies active in the district.
- e) **Poverty Data:** this section provides predicted poverty rates for 2009 for all districts and communes and detailed poverty data compiled and processed by the ID Poor project for those that have been covered by this project.

The future

It is our hope that this is the start of a longer-term process. We hope that a next edition of these District Data Books will offer more comprehensive, correct and up-to-date information. We hope that the District Administrations will not only start using this information, but also improve and update it. For this they are all provided with the full data set in digital format.

We invite agencies, projects and experts to send reports, statistics and maps that could be used for a next version to us and we invite all users of the District Data Books to inform us about errors, updates and inconsistencies. Please contact us through info@ncdd.gov.kh

We now invite you to browse through this data book. You may open this randomly or use the table of contents and go to the aspects that have your special interest.

We hope that you will be informed, surprised and assisted. We hope, above all, that this information will lead to a deeper understanding of causes and effects of poverty, to purposeful decisions on how to tackle those causes and to greater transparency in using scarce resources for the benefit of all.

Martin de Graaf
Program Advisor, PSDD/NCD

SECTION A: GEOGRAPHY

1 Administration and Infrastructure

Please see separate folder containing A3 maps.

2 Land Use and Natural Resources

Please see separate folder containing A3 maps

3 Geography

3.1 Land Area

Total Land Area (ha)	Forest Land Area (ha)		Cultivation Land Area (ha)	Construction Land Area (ha)	Other Land Area (ha)
	Total	Flooded Forest Area			
348311	341793	0	4778	1740	0

3.2 Distances between Offices

Location	Distance (Km)
From District Office to C/S Office of Choam Ksant	0
From District Office to C/S Office of Tuek Kraham	0
From District Office to C/S Office of Pring Thum	0
From District Office to C/S Office of Rumdaoh Srae	0
From District Office to C/S Office of Yeang	0
From District Office to C/S Office of Kantuot	0

SECTION B: DISTRICT PROFILE¹

¹ All data in this section come from the Commune Database (CDB) unless otherwise specified. These include primarily new CDB data, collected late 2008, and some data from earlier years. Please note that percentages are rounded to the nearest whole number.

1 General Information

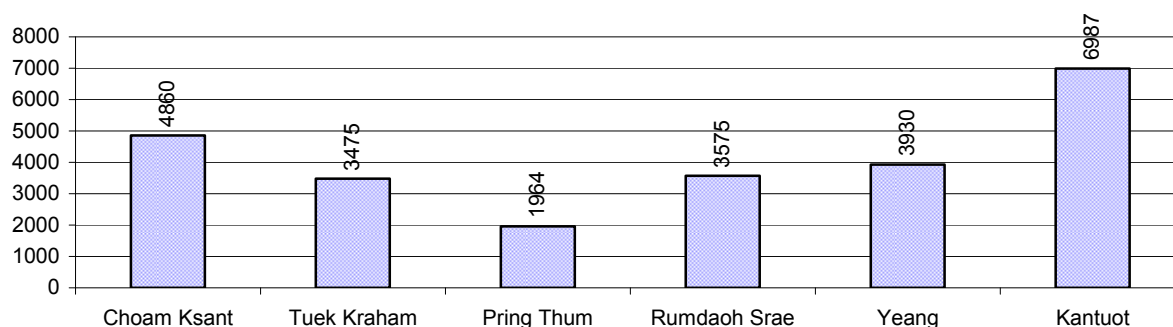
1.1 Population of the District

1.1.1 Total Population

Number of families	2005	2006	2007	2008
Total number of families	4,139 families	5,073 families	5,313 families	5,740 families
Increase (+)/Decrease (-) in nr of families		23%	5%	8%
Total population	18,003 pers	22,172 pers	22,592 pers	24,791 pers
Increase (+)/Decrease (-) in nr of people		23%	2%	10%
Number of female Headed Households (HH)	501 families	595 families	528 families	631 families

Note: Percentages of population and increase/decrease are calculated on basis of the previous year. A negative sign in front of the percentage indicates a decrease in population.

1.1.2 Population, by Commune, in 2008



1.1.3 Population, by Age Group, over 3 years

Population by age group	2006	2007	2008	
	%	%	%	Number
Age 0-5 years (as percentage of the population)	18%	18%	18%	4,353 persons
Male 0-5 yrs	51%	52%	52%	2,254 persons
Female 0-5 yrs	49%	48%	48%	2,099 persons
Age 6-17 (as percentage of the population)	31%	32%	31%	7,780 persons
Male 6-17 yrs	49%	49%	48%	3,717 persons
Female 6-17 yrs	51%	51%	52%	4,063 persons
Age 18-60 (as percentage of the population)	47%	47%	47%	11,602 persons
Male 18-60 yrs	48%	48%	49%	5,640 persons
Female 18-60 yrs	52%	52%	51%	5,962 persons
Age 61 above (as percentage of the population)	4%	4%	4%	1,056 persons
Male 61	43%	50%	48%	509 persons
Female 61	57%	50%	52%	547 persons

Note: The overall percentage for each age group is calculated on the basis of the total population. The gender distribution of each group is calculated on the basis of the population within that particular age group.

1.2 Occupations

1.2.1 Percentage of families with a particular Occupation over 3 years

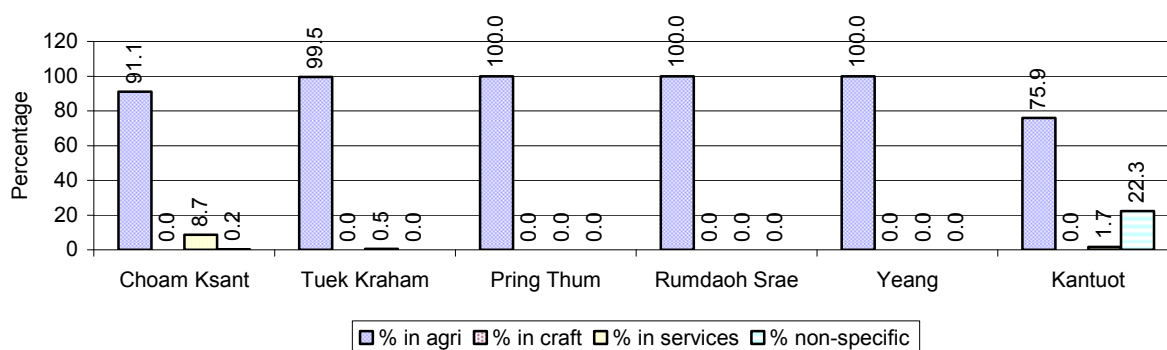
This table shows the percentage of the population who have a particular occupation (job), for example the percentage of the population in the district who are rice farmers, furniture crafter, trader, etc.

Description	2006	2007	2008	
	%	%	%	Number
Families whose main occupation is agriculture	95%	96%	91%	5,222 Families
Families whose primary occupation is rice farming	93%	96%	90%	5,185 Families
Families whose primary occupation is cultivating long-term crops	0%	0%	0%	0 Families
Families whose primary occupation is cultivating short-term crops	1%	0%	0%	20 Families
Families whose primary occupation is cultivating vegetable	0%	0%	0%	17 Families
Families whose primary occupation is fisherman	0%	0%	0%	0 Families
Families whose primary occupation is livestock farmer	1%	0%	0%	0 Families
Families whose primary occupation is NTFP collection	0%	0%	0%	0 Families
Families whose main occupation is craft work	0%	0%	0%	0 Families
Families, whose main occupation is in furniture craft, wooden, rattan, vine, bamboo	0%	0%	0%	0 Families
Families whose main occupation is in metal, aluminum, glass goods production	0%	0%	0%	0 Families
Families whose main occupation is food production	0%	0%	0%	0 Families
Families whose main occupation is tire, plastics and rubber goods production	0%	0%	0%	0 Families
Families whose main occupation is textile, clothing goods production	0%	0%	0%	0 Families
Families whose main occupation is in other production, not listed above	0%	0%	0%	0 Families
Families whose main occupation is services	1%	3%	2%	133 Families
Families whose main occupation is trade	0%	2%	2%	87 Families
Families whose main occupation is repair	0%	0%	1%	40 Families
Families whose main occupation is providing transport services	0%	0%	0%	6 Families
Families whose main occupation is providing other services	0%	0%	0%	0 Families
Families whose main occupation is not clear (or multi)	4%	1%	7%	385 Families

Note: The occupation percentages are calculated on the basis of the total number of families.

1.2.2 Percentage Families that work in one of four occupational sectors, by Commune in 2008

This table indicates the percentage of families involved in one of four occupation types: agriculture, craft, services or non-specific (other). Please note agriculture includes forestry activities such as cutting down trees and gathering gum from the trees.



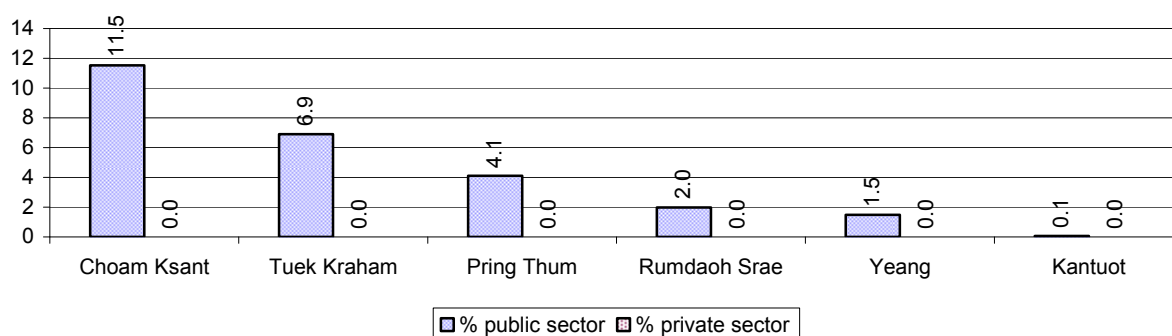
Note: Calculated on the basis of the total number of families within a commune.

1.2.3 Percentage of Families with public Sector, private Sector or uncertain Jobs, over 3 years

Description	2006	2007	2008	
	%	%	%	Number
Families that have a family member who is a government official, staff or worker	3%	4%	4%	235 families
Families that have a family member who is a private sector staff or worker	0%	0%	0%	0 families
Number of people aged 18-60 with uncertain/irregular jobs	0%	0%	0%	22 persons

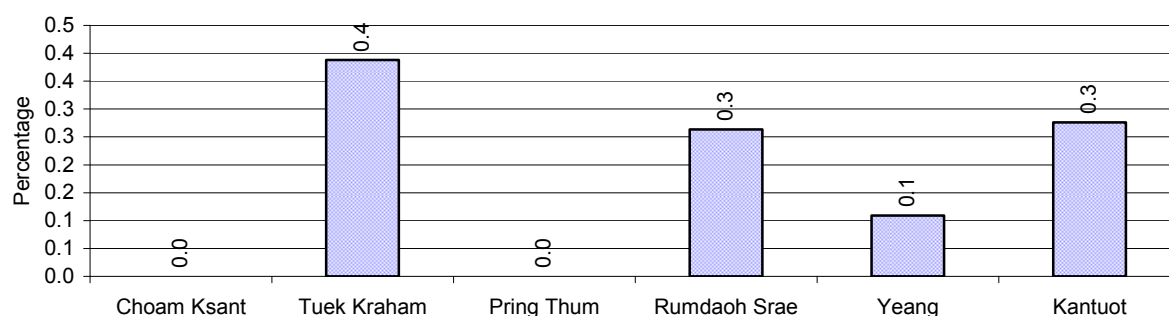
Note: In the first two rows percentages are calculated on the basis of the total number of families. In the third row the percentage is calculated on the basis of the total number of people aged 18-60 years.

1.2.4 Percentage of Families with public or private Sector Jobs, by Commune in 2008



Note: Calculated on the basis of the total number of families in the commune

1.2.5 Percentage of People aged 18-60 years with uncertain/irregular Jobs, by Commune, in 2008.



1.3 Property

1.3.1 Housing types and facilities over 3 years

This table shows the percentage of people living in a certain type of house. It also indicates how many houses have electricity or battery powered lights and how many have TV.

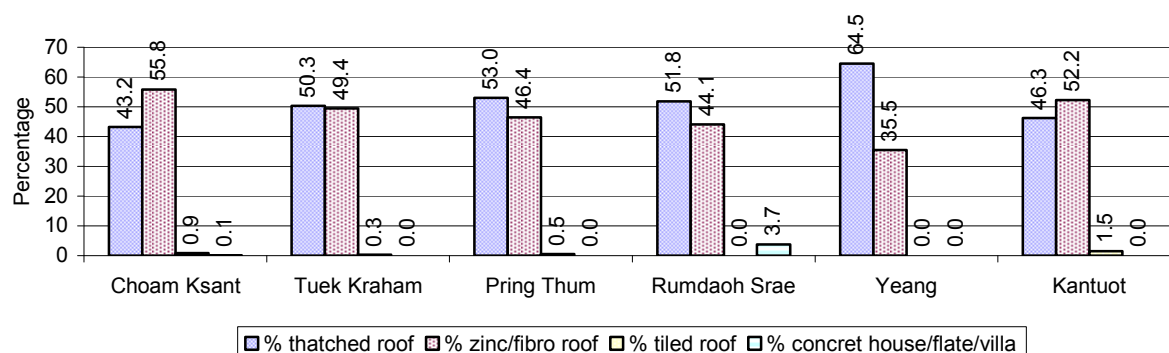
House Type	2006	2007	2008	
	%	%	%	Number
House with thatched roof	60 %	57 %	50 %	2,478 houses
House with zinc/fibro roof	40 %	43 %	49 %	2,395 houses
House with tiled roof	0 %	1 %	1 %	34 houses
Flats/apartments (with many families living)	0 %	0 %	1 %	30 houses
Concrete house or flat (with one family living)	0 %	0 %	0 %	1 houses
Villa house	0 %	0 %	0 %	0 houses
Houses with electricity	4 %	8 %	8 %	396 houses
Houses with battery light	18 %	21 %	31 %	1,523 houses
Houses with TV	8 %	14 %	22 %	1,073 houses

Note: Calculated against the total number of houses

1.3.2 Families living on public Land or without a permanent House

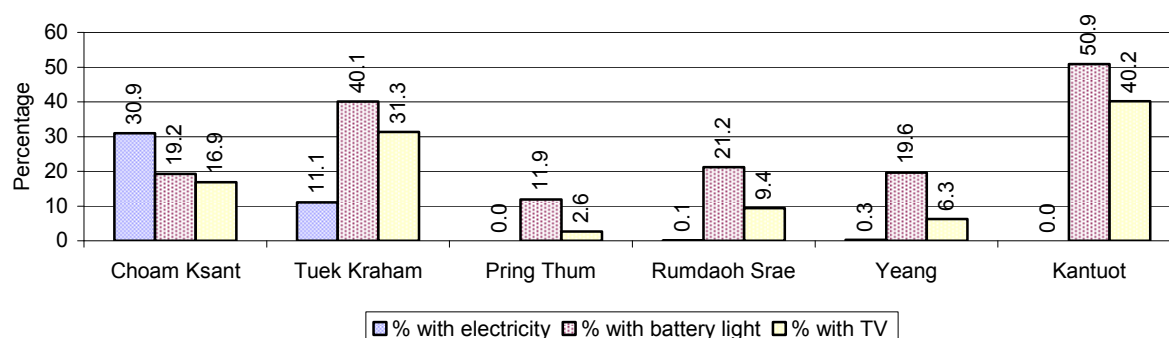
Living situation	2006	2007	2008
Families living in a house on public land	2 families	1 families	3 families
People, without permanent housing	12 person(s)	17 person(s)	9 person(s)

1.3.3 Percentage of Population living in a particular type of House, by Commune, in 2008



Note: Calculated against the total number of houses in each commune

1.3.4 Percentage of Houses with Electricity, Battery Lights and/or TVs, by Commune, in 2008



Note: Calculated against the total number of houses in each commune

1.3.5 Types of Vehicles and their ratio to Families across 3 years

This table shows the number of families per vehicle in the district. The last column shows the total number of each type of vehicle in the district for 2008.

Description	2006 ratio	2007 ratio	2008	
			Ratio	Number
Bicycle and bicycle with trailer	4	4	5	1,124
Ox-carts and horse-carts	5	12	13	427
Motorbike/with trailer	10	5	4	1,315
Motor tri-cycle	N/A	N/A	N/A	0
Large Transportation				
Total number of cars/trucks	149	64	88	65
Locally made vehicles	1,268	886	638	9
Trucks for goods transport	564	483	718	8
Buses/mini buses for passengers	1,015	N/A	N/A	0
Family cars	317	81	120	48
Agriculture machinery				
Tractors used for plowing	N/A	2,657	2,870	2
Power-tillage used for plowing	6	4	4	1,505
Other type of machinery				
Other type of machinery	N/A	N/A	N/A	0
Water transportation				
Row boats	N/A	N/A	2,870	2
Total number of motor boats	5,073	1,063	1,148	5
Motor boats used for fishing	N/A	N/A	N/A	0
Motor boats used for passengers	N/A	N/A	N/A	0
Motor boats used for goods transporting	5,073	1,063	1,148	5

Note: Ratio of families to a particular type of vehicle is the result of the total number of families divided by total number of that type of vehicle. Other types of vehicles, such as bulldozer, excavator, rollers etc. are not listed.

2 Infrastructure and Economy

2.1 Roads in meters over 3 years

Description	2006	2007	2008
Bituminous road	0 m	0 m	0 m
DBST, Macadam road	0 m	0 m	0 m
Concrete road	0 m	0 m	0 m
Laterite road	38,419 m	20,228 m	17,217 m
Constructed earth road	0 m	0 m	0 m
Un-constructed earth road	69,835 m	28,532 m	21,264 m

2.2 Sewerage Pipes in meters over 3 years

Description	Sewage pipe length		
	2006	2007	2008
Total length of sewage pipe, diameter 30-50 cm	110 m	20 m	20 m
Length of newly constructed sewage pipe, diameter 30-50 cm	0 m	0 m	0 m
Length of sewage pipe, diameter 30-50 cm needs repair/rehabilitation	0 m	0 m	0 m
Total length of sewage pipe, diameter of pipe 60-100 cm	250 m	452 m	404 m
Length of newly constructed sewage pipe, diameter 60-100 cm	32 m	114 m	65 m
Length of sewage pipe, diameter 60-100 cm needs repair/rehabilitation	25 m	10 m	10 m
Sewage pipe, diameter of pipe over 100 cm	201 m	0 m	0 m
Length of newly constructed sewage pipe, diameter over 100 cm	54 m	0 m	0 m
Length of sewage pipe, diameter over 100 cm needs repair/rehabilitation	60 m	0 m	0 m

2.3 Drainage and Bridges

Construction Type	2006		2007		2008	
	place(s)	Length	place(s)	Length	place(s)	Length
Single pipe culvert	56	446m	51	427 m	40	379 m
Double-pipe culvert	32	510m	4	46 m	4	50 m
Box pipe culvert	3	81m	0	0m	1	21 m
Wooden bridge	5	180m	1	16m	5	136 m
Concrete bridge	1	9m	1	9m	0	0 m
Bale bridge	11	204m	0	0m	0	0 m
Spillway construction	0	0m	0	0m	0	0 m

2.4 Services in the District

Descriptions	Number of places by year		
	2006	2007	2008
Public			
Electricity generating stations	3	3	3
Health clinics	0	0	1
Private			
Bicycle and motorcycle repair places	12	12	12
Agricultural machinery, tools and equipment repair places	4	5	5
Electronic tool repair places	0	5	5
Battery-charging services	38	37	37

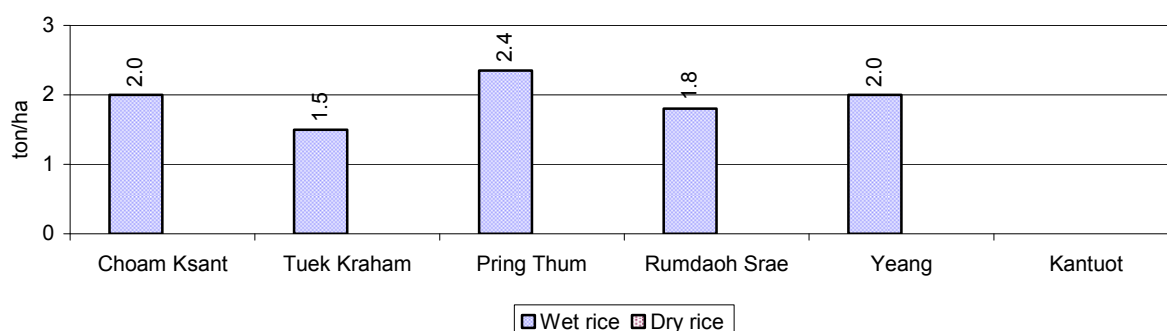
Descriptions	Number of places by year		
	2006	2007	2008
Handicraft places, wooden furniture and forest by-products	9	5	0
Other handicraft places (excluding furniture)	0	0	0
Small-scale services (hairstresser, phone service, massage, Karaoke, etc)	6	6	6
Small-scale food shop businesses (Food, groceries, drink shop, etc)	62	10	5
Small-scale rice mills	291	351	380
Medium or large-scale rice mills	0	0	0
Small-scale markets	1	1	1
Large-scale market	0	0	0
Alcohol refinery places	0	0	0
Pharmacies and small drug stores	2	8	9
Hotels	0	0	0
Guest houses	7	6	3
Restaurants	0	1	1
Gasoline stations	0	1	1

2.5 Agriculture

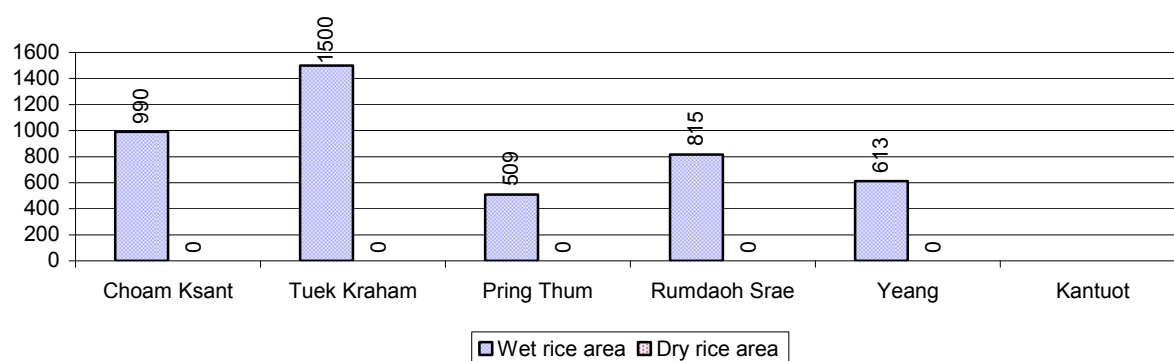
2.5.1 Rice cultivation in the District over 3 years

Description	2006	2007	2008
Total dry rice land area	0 ha	0 ha	0 ha
Actual dry rice cultivation area	0 ha	0 ha	0 ha
% actual cultivation to total land	-%	-%	-%
Total dry rice production	- tonne(s)	- tonne(s)	- tonne(s)
Average dry rice yield	- tonne(s)/ha	- tonne(s)/ha	- tonne(s)/ha
Total wet rice land area	4,646 ha	4,712 ha	4,520 ha
Actual wet rice cultivation area	4,252 ha	4,231 ha	4,427 ha
% actual cultivation to total land	92 %	90%	98%
Total wet rice production	6,803.20 tonne(s)	7,333.73 tonne(s)	8,544.11 tonne(s)
Average wet rice yield	1.6 tonne(s)/ha	1.7 tonne(s)/ha	1.9 tonne(s)/ha
Total intensive rice land area	0 ha	0 ha	0 ha
Actual intensive rice cultivation area	- ha	- ha	- ha
Average intensive rice yield	- tonne(s)/ha	- tonne(s)/ha	- tonne(s)/ha
Actual upland rice cultivation area	160 ha	105 ha	113 ha
Total upland rice production	176 tonne(s)	77 tonne(s)	94 tonne(s)
Average upland rice yield	1.1 tonne(s)/ha	0.7 tonne(s)/ha	0.8 tonne(s)/ha

2.5.2 Estimated wet and dry Season Rice Yield in tonne(s)/Ha, by Commune, in 2008



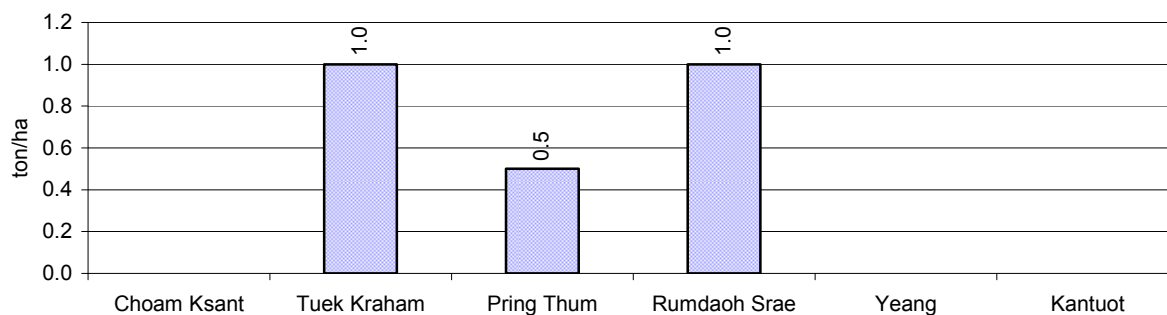
2.5.3 Cultivated wet and dry Season Rice areas in Ha, by Commune, in 2008



2.5.4 Estimated intensive Rice Yields in tonnes/Ha, by Commune, for 2008

There were no estimated intensive rice yields in this District in 2008

2.5.5 Estimated upland Rice Yield in tonnes/Ha, by Commune, for 2008

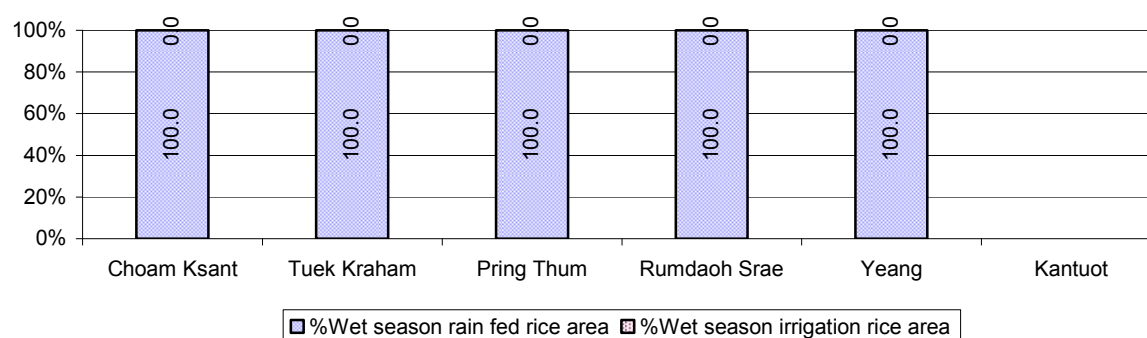


2.5.6 Wet season Rice irrigation across 3 years

Description		2006 %	2007 %	2008	
				%	Number
Total area of wet season rain fed rice land		100%	100%	100 %	4,427 ha
Percentage of wet season rice land that is irrigated; and for 2008 area in Ha		0 %	0 %	0 %	0 ha
Where	Area irrigated from canal/dam	- %	- %	- %	0 ha
	Area irrigated from river, stream, lake, natural pond	- %	- %	- %	0 ha
	Area irrigated from drilled well	- %	- %	- %	0 ha
	Area irrigated from dug pond	- %	- %	- %	0 ha

2.5.7 Water sources for wet Season Rice Cultivation, by Commune, in 2008

This chart shows the percentage of wet season rice cultivation receiving water from rain (natural) and from irrigation.



2.5.8 Access to Irrigation

Description	2006 %	2007 %	2008	
			%	Number
Families who have access to irrigation water	0%	0%	0%	0 families
Families who have irrigation wells	0%	0%	0%	0 families

Note: Calculated against the total number of families are rice farmers

2.5.9 Number of Irrigation Wells over 3 years

Description	2006	2007	2008
Number of irrigation wells	0 wells	0 wells	0 wells

2.5.10 Percentage of Families with access to (supplemental) Irrigation for wet Season Rice cultivation, by Commune, in 2008

There are no families with access to supplemental irrigation for wet season rice irrigation in this District in 2008

Note: % of families, with access to irrigation is calculated against the total number of families, whose main occupation is rice farming. Irrigated wet rice land area is calculated against the total actual wet rice land cultivated areas

2.5.11 Irrigation Wells, by Commune, in 2008

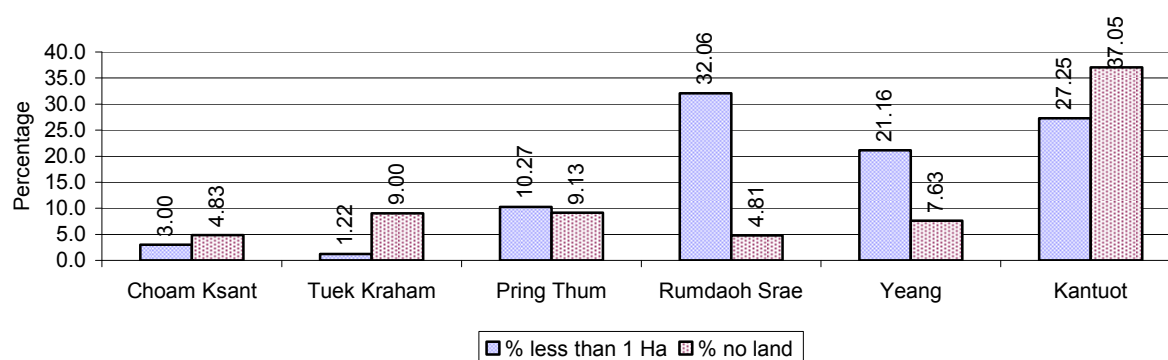
There are no irrigations wells in this District in 2008

2.5.12 Farmers owning less than one hectare of Rice Land

Description	2006 %	2007 %	2008	
			%	Number
Families who have less than one hectare of rice land	16%	14%	17%	863 families
Families who do not own any rice land	9%	15%	14%	734 families

Note: Calculated on basis of total number of families who are rice farming

2.5.13 Percentage of Farmers with less than one Hectare or no Rice Land, by Commune, in 2008

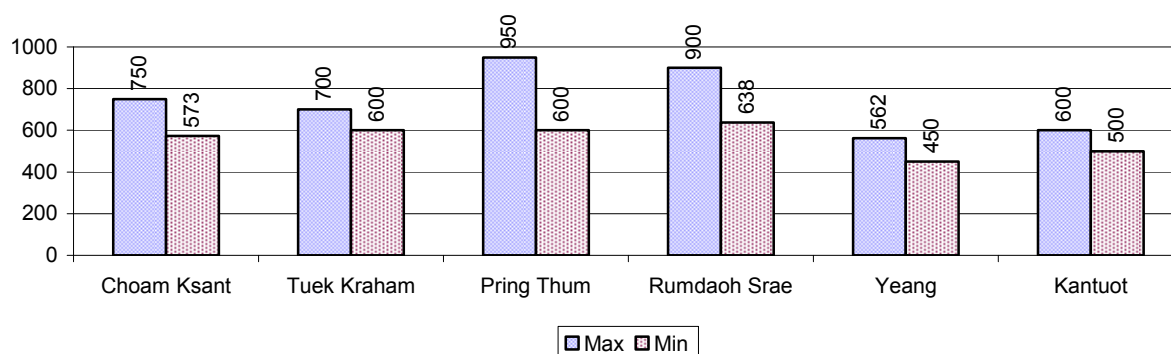


Note: Calculated on basis of total number of families who are rice farming

2.5.14 Average farm-gate Prices of Rice, over 3 years

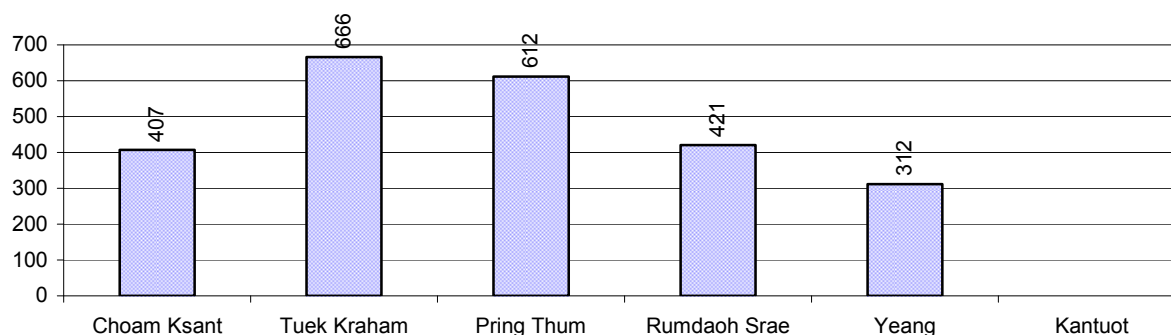
Description	2006	2007	2008
Maximum average farm gate price	541 Riels/Kg	716 Riels/Kg	744 Riels/Kg
Minimum average farm gate price	412 Riels/Kg	559 Riels/Kg	560 Riels/Kg
Average farm gate price	476 Riels/Kg	637 Riels/Kg	652 Riels/Kg
Average rice production per person	315 Kg/person	328 Kg/person	485 Kg/person

2.5.15 Minimum and maximum farm-gate Prices of Rice in Riel/kg, by Commune, in 2008



2.5.16 Production of Paddy in Kgs/Person, by Commune, in 2008

This table shows how much paddy (harvested rice) is produced in a year in a commune, in kgs per person.



2.5.17 Production of other Crops, over 3 years

Crops	2006	2007	2008
Corn cultivation area	10 ha	10 ha	0 ha
Estimated corn yield	1.0 tonne(s)/ha	1.0 tonne(s)/ha	- tonne(s)/ha
Estimated corn production	10 tonne(s)	10 tonne(s)	- tonne(s)
Soya bean cultivation area	0 ha	0 ha	0 ha
Estimated Soya bean yield	- tonne(s)/ha	- tonne(s)/ha	- tonne(s)/ha
Estimated Soya bean production	- tonne(s)	- tonne(s)	- tonne(s)
Mungbean cultivation area	0 ha	0 ha	0 ha
Estimated Mungbean yield	- tonne(s)/ha	- tonne(s)/ha	- tonne(s)/ha
Estimated Mungbean production	- tonne(s)	- tonne(s)	- tonne(s)
Peanut cultivation area	4 ha	0 ha	0 ha
Estimated Peanut yield	0.5 tonne(s)/ha	- tonne(s)/ha	- tonne(s)/ha
Estimated Peanut production	2 tonne(s)	- tonne(s)	- tonne(s)
Cassava cultivation area	2 ha	0 ha	0 ha
Estimated Cassava yield	0.5 tonne(s)/ha	- tonne(s)/ha	- tonne(s)/ha
Estimated Cassava production	1 tonne(s)	- tonne(s)	- tonne(s)
Sweet potatoes cultivation area	5 ha	0 ha	0 ha
Estimated Sweet potatoes yield	0.5 tonne(s)/ha	- tonne(s)/ha	- tonne(s)/ha
Estimated Sweet potatoes production	3 tonne(s)	- tonne(s)	- tonne(s)
Sesame cultivation area	1 ha	0 ha	0 ha
Estimated Sesame yield	0.3 tonne(s)/ha	- tonne(s)/ha	- tonne(s)/ha
Estimated Sesame production	0 tonne(s)	- tonne(s)	- tonne(s)

2.5.18 Yields of Corn, Soya beans and Mungbeans in tonne(s)/ha, by Commune, in 2008

There were no yields for any of these crops in this District in 2008

2.5.19 Yields of Peanuts and Cassava in tonne(s)/ha by Commune, in 2008

There were no yields for any of these crops in this District in 2008

2.5.20 Yields of Sweet Potatoes and Sesame in tonne(s)/ha, by Commune, in 2008

There were no yields for any of these crops in this District in 2008

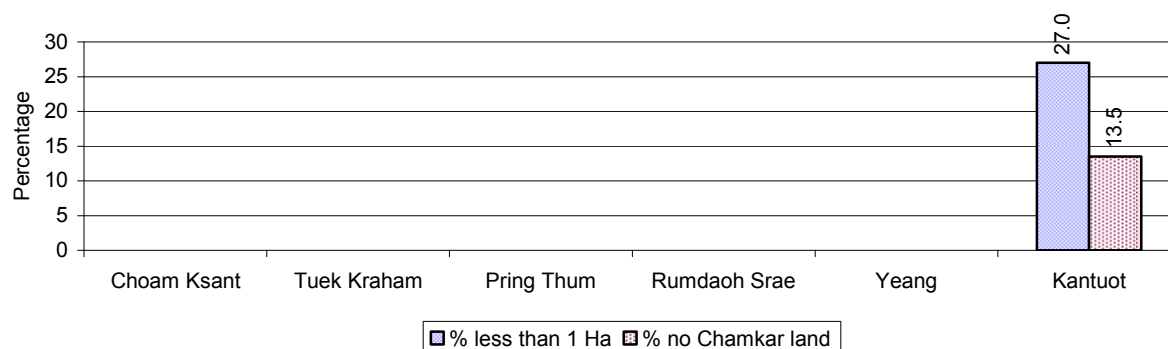
2.5.21 Percentage Farmers who own less than 1 Ha or no Chamkar land

Description	2006 %	2007 %	2008	
			%	Number
Families, who own less than 1ha of Chamkar land	34%	53%	27%	10 families
Families, with no Chamkar land	0%	47%	14%	5 families

Note 1: Calculated as a percentage of the total number of families whose main occupation is Chamkar (not rice) farming

Note 2: Chamkar land is no-rice land, i.e. other crops

2.5.22 Percentage Farmers owning less than 1 ha or no Chamkar land, by Commune, in 2008



Note: Percentage is calculated among families, who Chamkar farm as a main occupation, not the total population of the commune.

2.5.23 Percentage of Families raising Cattle/Buffalo, over 3 years

Description	2006 %	2007 %	2008	
			%	Number
Families raising cattle/buffalo	52%	52%	50%	2,855 families
Families raising cattle/buffalo as labor forces	33%	25%	18%	1,044 families

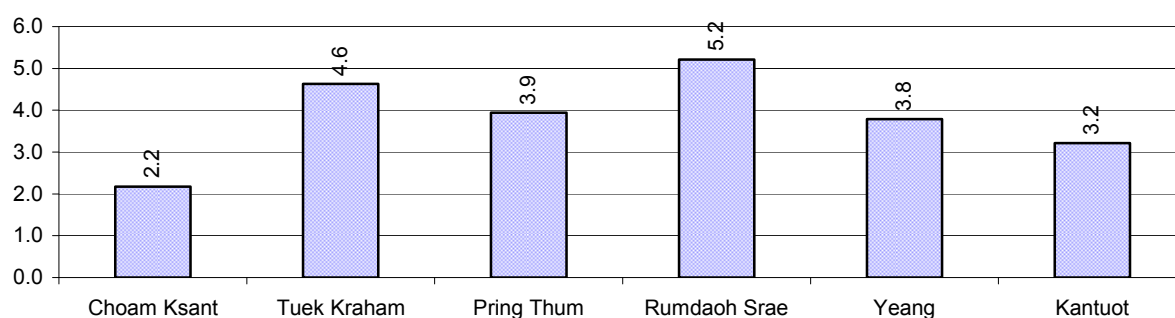
Note: Calculated against the total number of families.

2.5.24 Number of Cattle/buffalo being raised, over 3 years

Description	2006	2007	2008
Total number of cattle/buffalo	11,460 head(s)	10,094 head(s)	10,900 head(s)
Average cattle/buffalo per families	4.3 head(s)/families	3.6 head(s)/families	4 head(s)/families

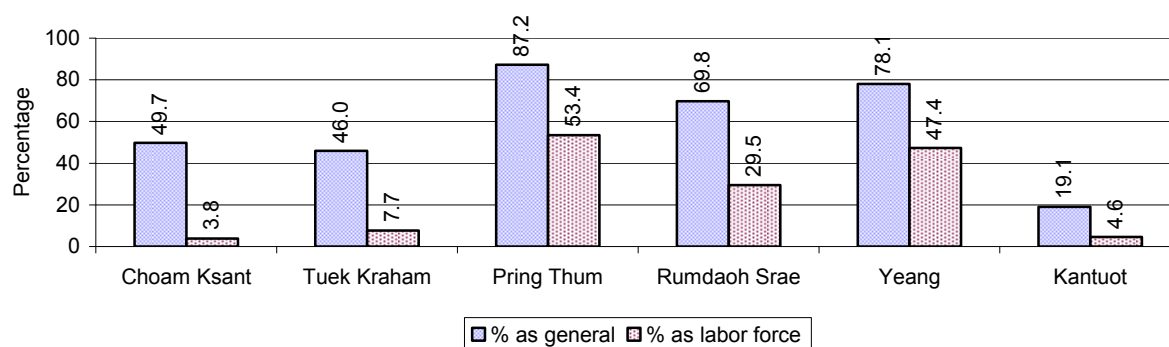
Note: Calculated by dividing total number of cattle/buffalo by total number of cattle/buffalo raising families

2.5.25 Average number of Cattle/Buffalo per Family, by Commune, in 2008



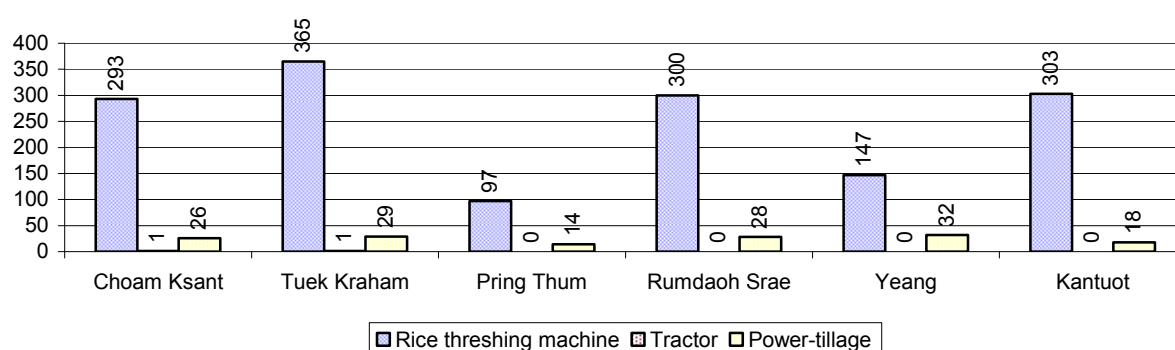
Note: Calculated by dividing total number of cattle/buffalo by total number of cattle/buffalo raising families

2.5.26 Percentage Families raising Cattle/Buffalo, for general and labor purposes in 2008, by Commune



Note: Calculated using the total number of families raising cattle/buffalo against the total number of families.

2.5.27 Type and number of agricultural Machines, by Commune, in 2008

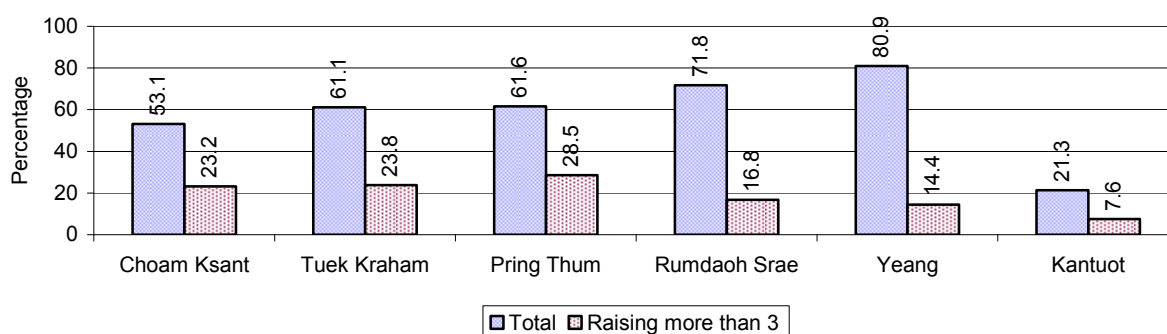


2.5.28 Livestock-producing Households over 3 years

Description	2006 %	2007 %	2008	
			%	Number
Total number of families raising pigs	49%	50%	52%	2,984 families
number of families raising more than 3 pigs	12%	13%	17%	968 families
Total number of families raising chickens	71%	67%	65%	3,752 families
number of families raising more than 3 chickens	50%	41%	46%	2,640 families
Total number of families raising ducks	5%	8%	7%	413 families
number of families raising more than 5 ducks	4%	4%	5%	287 families
Total number of families raising goats or sheep	0%	0%	0%	2 families
Total number of families raising horses	0%	0%	0%	0 families

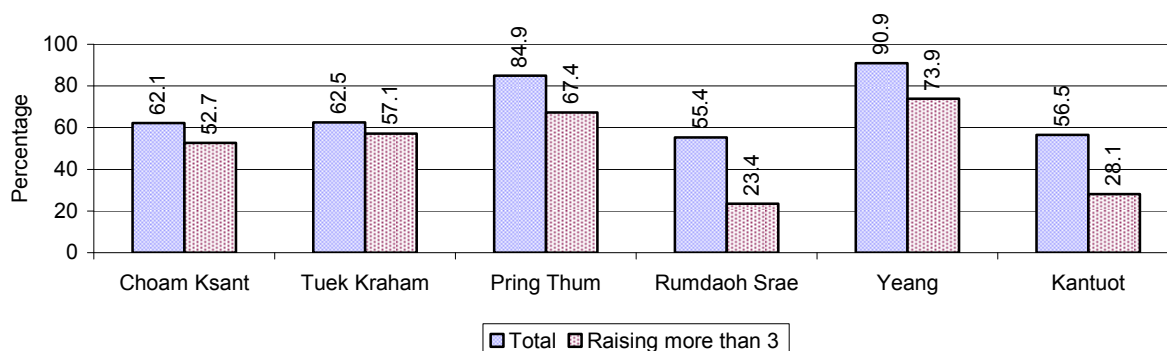
Note: Calculated against the total number of families

2.5.29 Percentage Families raising Pigs, by Commune, in 2008



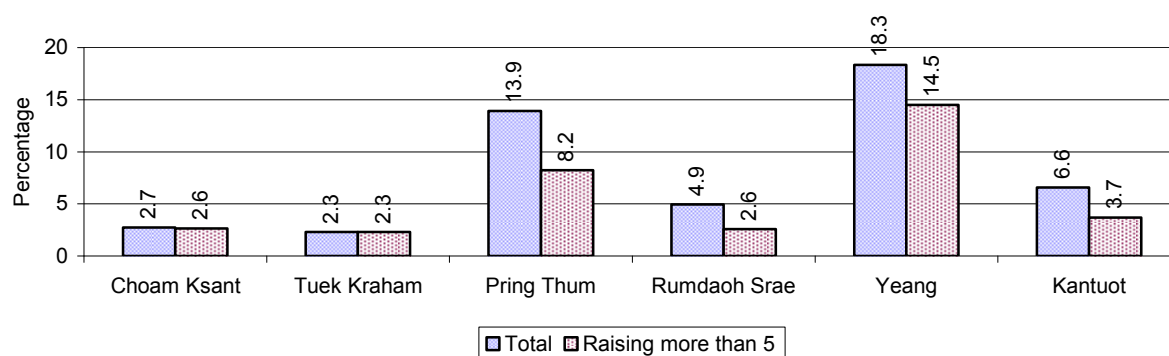
Note: Calculated against the total number of families in the commune

2.5.30 Percentage Families raising Chickens, by Commune, in 2008



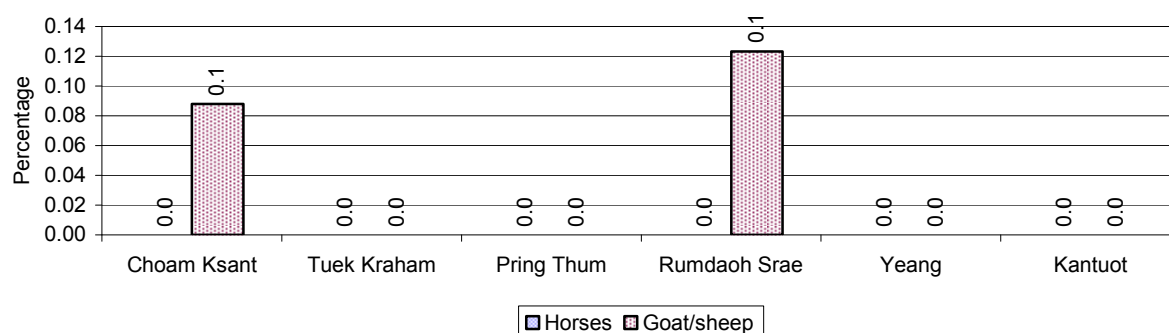
Note: Calculated against the total number of families in the commune

2.5.31 Percentage Families raising Ducks, by Commune, in 2008



Note: Calculated against the total number of families in the commune

2.5.32 Percentage Families raising Horses, Goats or Sheep, by Commune, in 2008



Note: Calculated against the total number of families in the commune

2.5.33 Livestock Farms over 3 years

Description	2006	2007	2008
Number of cattle/buffalo farms	0 farm(s)	0 farm(s)	0 farm(s)
Number of pig farms	0 farm(s)	0 farm(s)	0 farm(s)
Number of goat/sheep farms	0 farm(s)	0 farm(s)	0 farm(s)
Number of chicken farms	0 farm(s)	0 farm(s)	0 farm(s)
Number of duck farms	0 farm(s)	0 farm(s)	0 farm(s)

2.5.34 Number Livestock Farms, by Commune in 2008

There were no farms of this type in this District in 2008

Note: Number of farms are recorded by the village chief, not by counting number of livestock in each farm

2.5.35 Number Chicken and Duck Farms, by Commune, for 2008

There were no farms of this type in this District in 2008

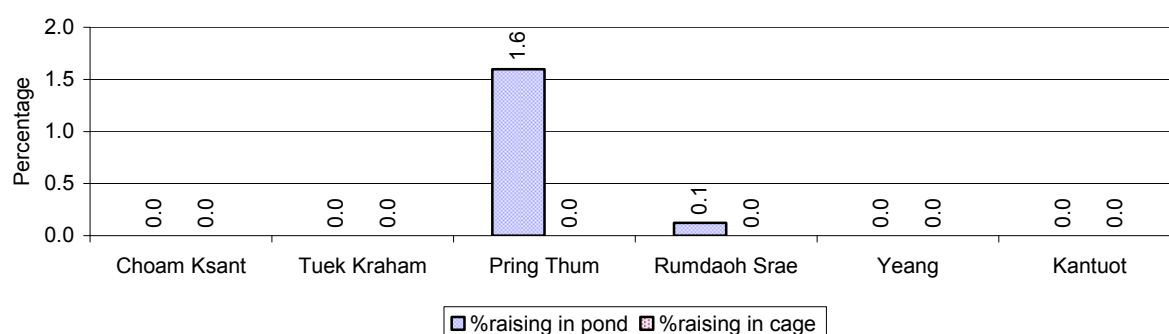
Note: Number of farm places recorded by village chief, not by counting number of livestock in each farm

2.5.36 Families raising Fish over 3 years

Description	2006	2007	2008
Total number of families raising fish	28 families	8 families	8 families
% families raising fish	1%	0%	0%
Number families raising fish in pond	28 families	8 families	8 families
% families raising fish in pond	1%	0%	0%
Number fish pond	28 pond(s)	26 pond(s)	26 pond(s)
No. of ponds per family	1.0 pond/families	3.3 pond/families	3.3 pond/families
Number of families raising fish in cage	0 families	0 families	0 families
%families raising fish in cage	0%	0%	0%
Number of fish cage	0 cage(s)	0 cage(s)	0 cage(s)
No. of fish cage per family	- cage /families	- cage /families	- cage /families

Note: % of families raising fish or fish in ponds or cages is calculated a percentage of the total number of families.

2.5.37 Percentage of Families raising Fish, by Commune, in 2008



Note: Calculated as a percentage of the total number of families in the commune.

2.5.38 Shrimp and Prawn Farming over 3 years

Description	2006	2007	2008
Number of families raising shrimps	0 families	0 families	0 families
% Families raising shrimps	0%	0%	0%
Number of shrimp ponds	0 pond	0 pond	0 pond
Total area raising shrimps	0 ha	0 ha	0 ha
Area per family	-ha/families	-ha/families	-ha/families
Number of families raising prawns	0 families	0 families	0 families
% families raising prawns	0%	0%	0%
Number prawn ponds	0 pond	0 pond	0 pond
Ponds per families	- pond/families	-pond/families	-pond/families
Number of prawn cages	0 cage	0 cage	0 cage
Cages per families	0 cage /families	0 cage /families	0 cage /families

Note: Percentage of families raising either prawns or shrimp is calculated against the number of families, who do aquaculture farming, NOT the total population.

2.5.39 Numbers of Families raising Shrimps and number of Shrimp Ponds, by Commune, in 2008

There were none of these in this District in 2008

2.5.40 Number of Families raising Prawn and Number of Prawn Ponds/Cages, by Commune, in 2008

There were none of these in this District in 2008

3 Social Aspects

3.1 Education

3.1.1 Kindergarten in the District over 3 years

Description	2006	2007	2008
Number of community kindergarten schools	0 school(s)	0 school(s)	0 school(s)
Number of community kindergarten class rooms	0 room(s)	0 room(s)	0 room(s)
Number of community kindergarten classes	0 class(es)	3 class(es)	0 class(es)
Number of community kindergarten teachers	0 person(s)	3 person(s)	0 person(s)
Number of women community kindergarten teachers	0 women	1 women	0 women
Number of state and private kindergarten schools	1 school(s)	1 school(s)	0 school(s)
Number of state and private kindergarten class rooms	0 room(s)	0 room(s)	0 room(s)
Number of state and private kindergarten classes	2 class(es)	2 class(es)	0 class(es)
Number of state and private kindergarten teachers	3 person(s)	3 person(s)	6 person(s)
Number of women state and private kindergarten teachers	3 women	3 women	6 women

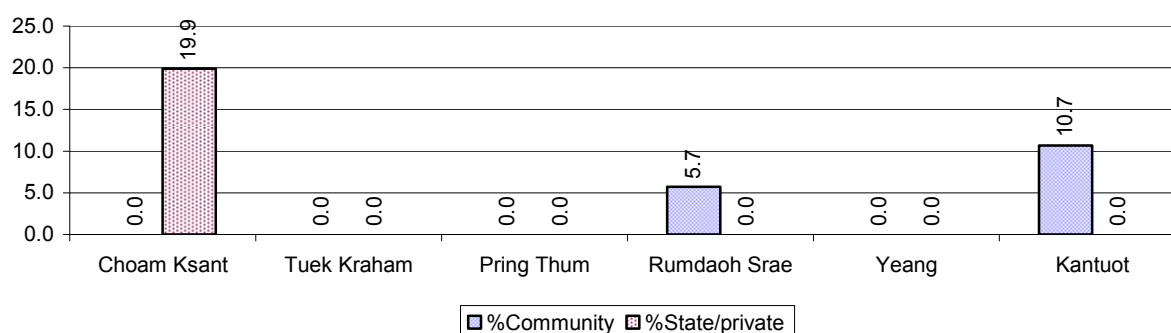
3.1.2 Percentage enrolment at Kindergarten level over 3 years

This table shows the percentage of the total 3-5 year old population attending kindergarten.

Description	2006 %	2007 %	2008	
			%	Number
Total percentage of children, 3-5 yrs, go to kindergarten	2%	12%	8%	222 person(s)
Percentage of children, 3-5 yrs, go community kindergarten	0%	8%	4%	119 person(s)
Percentage children, 3-5 yrs, go state/private kindergarten	2%	4%	4%	103 person(s)

Note: Calculated against the total for that age group

3.1.3 Percentage of Children 3-5 yrs attending Kindergarten, by Commune, in 2008



3.1.4 Basic Education over 3 years

Primary School

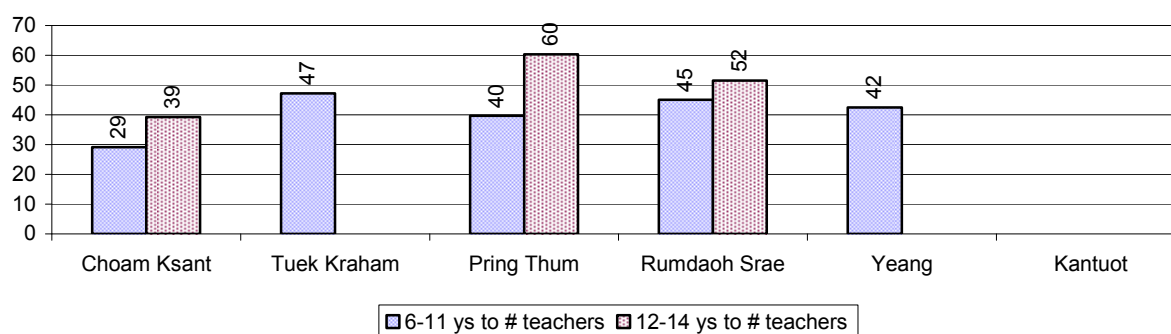
Description	2006	2007	2008
Number of primary schools	23 school(s)	25 school(s)	20 school(s)
Number of primary school rooms	99 room(s)	96 room(s)	76 room(s)
Number of primary classes	130 class(es)	145 class(es)	115 class(es)
Number of primary teachers	77 person(s)	100 person(s)	73 person(s)
Ratio of children 6-11 yrs to school	148	138	141
Ratio of children 6-11 yrs to school room	34	36	37
Ratio of children 6-11 yrs to class	26	24	24
Ratio of children 6-11 yrs to teacher	44	34	39

Note: According to education norm, children 6-11 yrs should attend primary school, while 12-14 yrs should be in lower secondary school, but in reality this varies.

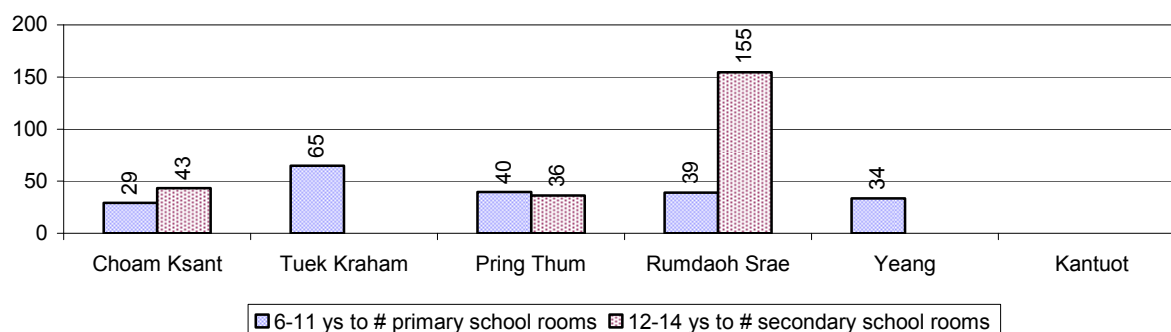
Lower Secondary School

Description	2006	2007	2008
Number of lower secondary schools	2 school(s)	3 school(s)	3 school(s)
Number of lower secondary school rooms	10 room(s)	12 room(s)	17 room(s)
Number of lower secondary classes	12 class(es)	13 class(es)	14 class(es)
Number of lower secondary teachers	14 person(s)	19 person(s)	20 person(s)
Ratio children 12-14 yrs to school	891	648	473
Ratio of children 12-14 yrs to school room	178	162	83
Ratio of children 12-14 yrs to class	149	149	101
Ratio of children 12-14 yrs to teacher	127	102	71

3.1.5 Ratio of 6-11 year old and 12-14 year old Children to number of Teachers, by Commune, in 2008



3.1.6 Ratio of 6-11 year old and 12-14 year old Children to number of School Rooms, by Commune, in 2008



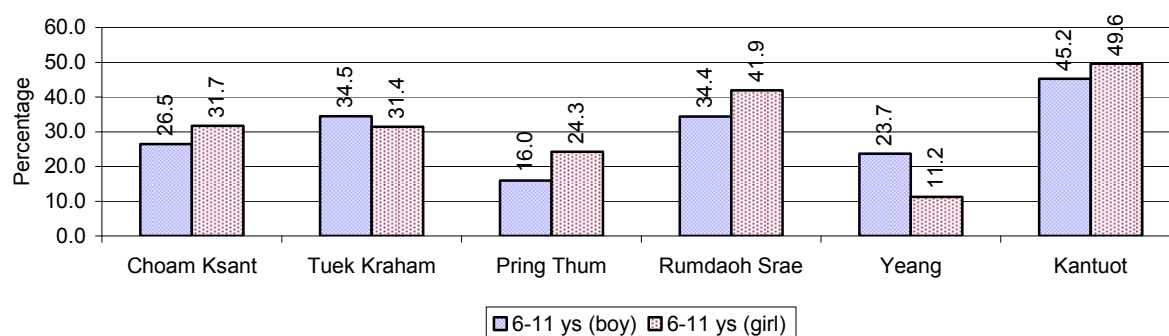
3.1.7 Enrolment status at Primary Level over 3 years

Description	2006 %	2007 %	2008	
			%	Number
Total children aged 6-11 years old	15%	15%	15%	3,730 person(s)
Total children aged 6-11 who are in school	76%	79%	67%	2,503 person(s)
Total children aged 6-11 who are not in school	24%	21%	33%	1,227 person(s)
Total girls aged 6-11 years old	15%	15%	16%	1,976 person(s)
Total girls aged 6-11 who are in school	75%	75%	66%	1,304 person(s)
Total girls aged 6-11 who are not in school	25%	25%	34%	672 person(s)
Total boys aged 6-11 years old	15%	15%	14%	1,754 person(s)
Total boys aged 6-11 who are in school	76%	83%	68%	1,199 person(s)
Total boys aged 6-11 who are not in school	24%	17%	32%	555 person(s)

Note 1: Percentage is calculated on the basis of the total number of children within 6-11 year age group for the first 3 rows and for the total girls and the total boys aged 6-11 yrs.

Note 2: Number of girls aged 6-11 who are in & not in school is calculated against the total number of girls aged 6-11 yrs. Number boys, 6-11 yrs who are in & not in school are calculated against the total number of boys aged 6-11 yrs.

3.1.8 Percentage of 6-11 year old Children not in School, by Commune, in 2008



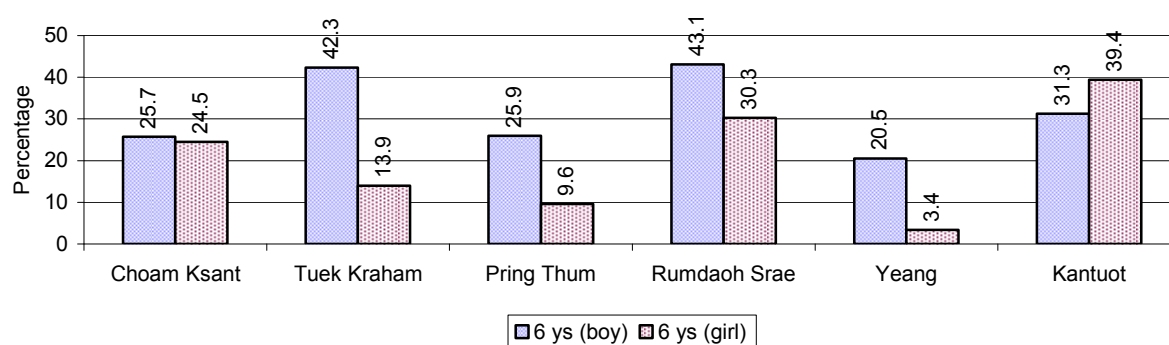
Note: calculated on the basis of the total number of children within 6-11 year age group in the commune.

3.1.9 Enrolment of 6 year old Children over 3 years

Description	2006 %	2007 %	2008	
			%	Number
Total % and number of children aged 6 years old	5%	5%	5%	1,284 person(s)
Total % of children aged 6 years old in school	60%	70%	66%	842 person(s)
Total % of children aged 6 years old not in school	40%	30%	34%	442 person(s)

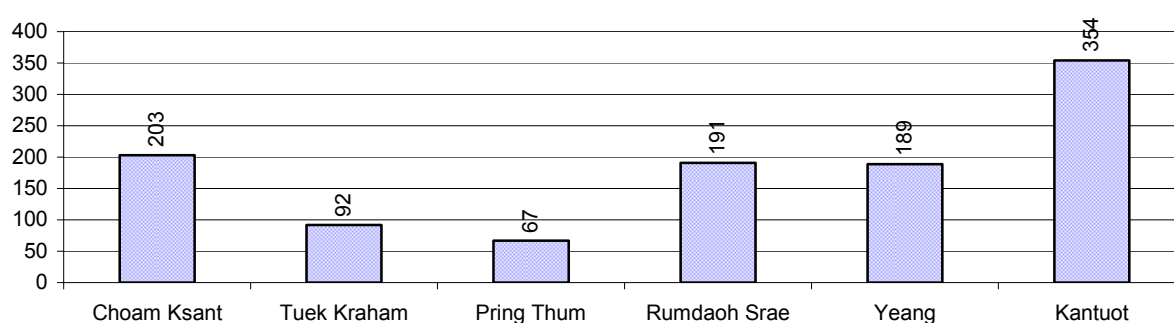
Note: First row calculated as a percentage of total population. Second and third row calculated as a percentage of the total number of 6 year olds.

3.1.10 Percentage of 6 year old Children not in School, by Commune, in 2008



Note: Calculated as a percentage of total 6 year old population

3.1.11 Number of 5 year old Children in each Commune in 2008

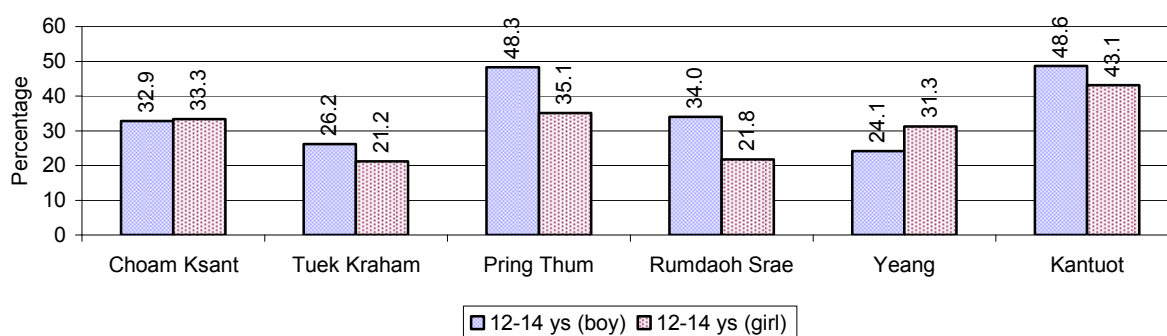


3.1.12 Enrolment at Lower Secondary Level over 3 years

Description	2006 %	2007 %	2008	
			%	Number
Total children aged 12-14 years old	8%	9%	8%	2,028 person(s)
Children aged 12-14 years old in school	81%	80%	65%	1,316 person(s)
Children aged 12-14 years old not in school	19%	20%	35%	712 person(s)
Total girls aged 12-14 years old	8%	8%	8%	1,043 person(s)
Girls aged 12-14 years old in school	81%	80%	67%	696 person(s)
Girls aged 12-14 years old not in school	19%	20%	33%	347 person(s)
Total boys aged 12-14 years old	8%	9%	8%	985 person(s)
Boys aged 12-14 years old in school	80%	81%	63%	620 person(s)
Boys aged 12-14 years old not in school	20%	19%	37%	365 person(s)

Note: Percentage is calculated on the basis of number of the total number of children within 12-14 yrs group, except for the first row of each section which is calculated on the basis of the total population.

3.1.13 Percentage of 12-14 year olds not in School, by Commune, in 2008



Note: Calculated as a percentage of the total 12-14 year old population in each commune

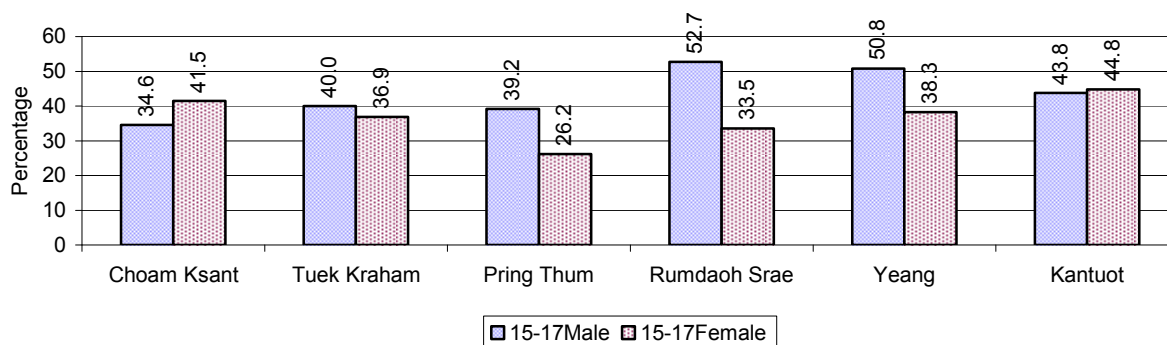
3.1.14 Upper Secondary Schools over 3 years

Description	2006	2007	2008
Number of upper secondary schools	1 school(s)	1 school(s)	0 school(s)
Number of upper secondary school rooms	0 room(s)	0 room(s)	0 room(s)
Number of upper secondary classes	2 class(es)	3 class(es)	0 class(es)
Number of upper secondary teachers	2 person(s)	2 person(s)	3 person(s)
Ratio of 15-17 yr olds to number of school	1,588	1,757	N/A
Ratio of 15-17 yr olds to number of school room	N/A	N/A	N/A
Ratio of 15-17 yr olds to number of classes	794	586	N/A
Ratio of 15-17 yr olds to number of teacher	794	879	480

3.1.15 Enrolment of 15-17 year old teenagers over 3 years

Description	2006	2007	2008
Number of teenage, 15-17 years old	1,588 person(s)	1,757 person(s)	2,022 person(s)
Number of teenage, 15-17 years old, who are not studying	690 person(s)	614 person(s)	838 person(s)
Percentage of teenage, 15-17 years old not studying	43%	35%	41%

3.1.16 Percentage of 15-17 year old Teenagers not at School, by Commune, in 2008



3.1.17 Literacy Classes as of 2008

Literacy classes	Organized by:		Other Program(s)	Total
	PDoEYS	NGOs		
Number of On-going literacy classes	0 class(es)	0 class(es)	0 class(es)	0 class(es)
Number of literacy students in on-going classes	0 person(s)	0 person(s)	0 person(s)	0 person(s)
Completed literacy class(es)	0 classes	0 classes	0 classes	0 classes
Number of literacy students that have completed literacy classes	0 person(s)	0 person(s)	0 person(s)	0 person(s)
Number of students that passed	0 person(s)	0 person(s)	0 person(s)	0 person(s)

3.1.18 Number of on-going and completed Literacy Classes, by Commune, in 2008

There were no classes in this District in 2008

3.1.19 Students of on-going & completed Literacy Classes, by Commune, in 2008

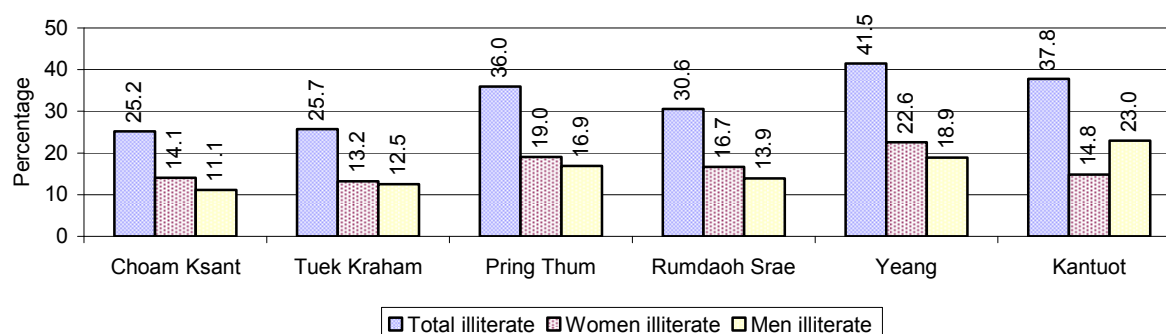
There were no students who had taken or were taking literacy classes in this District in 2008

3.1.20 Percentage of illiterate People between 15-60, over 3 years

Illiteracy Status	2006 %	2007 %	2008	
			%	Number
Illiterate people, 15-60 years old	44%	39%	33%	4,486 person(s)
Illiterate females, 15-60 years old	24%	23%	16%	2,209 person(s)
Illiterate people, 15-17 years old	29%	19%	18%	355 person(s)
Illiterate females, 15-17 years old	15%	10%	5%	111 person(s)
Illiterate people, 18-24 years old	44%	39%	31%	912 person(s)
Illiterate females, 18-24 years old	26%	24%	19%	546 person(s)
Illiterate people, 25-60 years old	47%	43%	37%	3,219 person(s)
Illiterate females, 25-60 years old	25%	25%	18%	1,552 person(s)

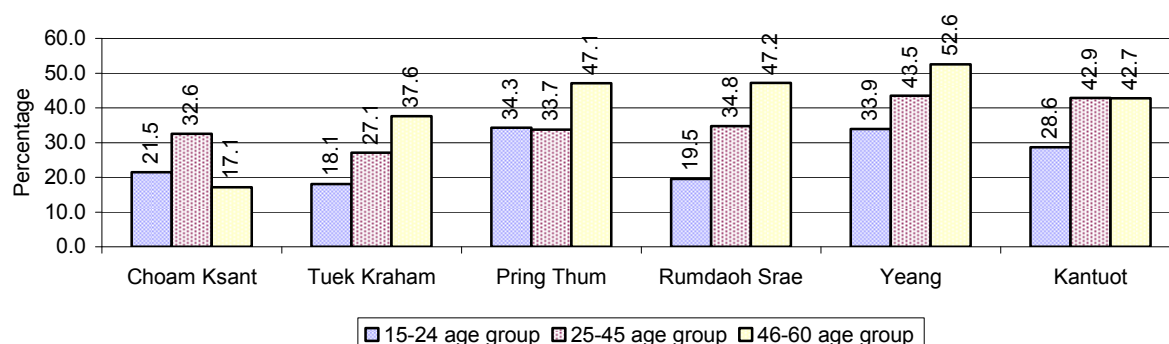
Note: Percentage is calculated on the basis of number of people in age each group.

3.1.21 Percentage illiterate People among 15-60 yrs old, by Commune, in 2008



Note: Percentages are calculated on the basis of number of people in that age group.

3.1.22 Percentage illiterate People for 15-24 yrs, 25-45 yrs and 46-60 yrs, by Commune, in 2008



Note: Percentage of illiterate people in each age group is calculated on the basis of number of people in that age group.

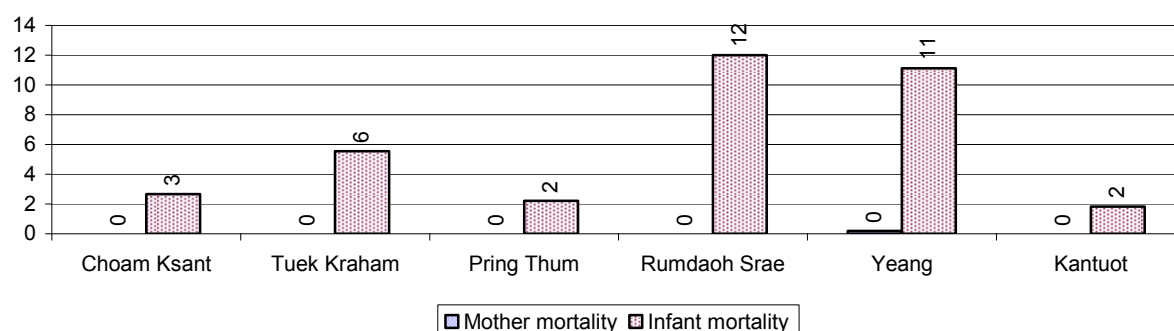
3.2 Health

3.2.1 Health Situation of Women and Children, over 3 years

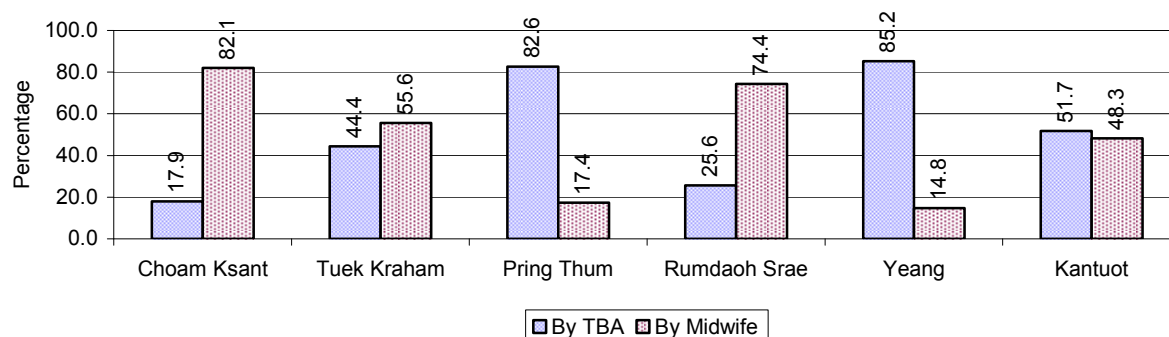
Description	2006	2007	2008
Number families with a birth during the year	626 families	606 families	651 families
Number of women who had their baby delivered by a TBA	371 person(s)	296 person(s)	337 person(s)
Percentage of women who had their baby delivered by a TBA	59 %	49 %	52 %
Number of women who had their baby delivered by a midwife	255 person(s)	310 person(s)	314 person(s)
Percentage of women had their baby delivered by a midwife	41 %	51 %	48 %
Number of mothers who died within 1 month of giving birth	9 person(s)	5 person(s)	1 person(s)
Mothers who died within 1 month of giving birth per 100,000 families having a delivery	1,438	825	154
Number of infants born during the year	597 person(s)	606 person(s)	642 person(s)
Number of Infants who died within 1 month	29 person(s)	33 person(s)	20 person(s)
Infants mortality within 1 month per 1,000 births	49	54	31
Number of children who died below the age of 5.	18 person(s)	31 person(s)	14 person(s)
Number of infants, aged 9-12 months, born during the year	387 person(s)	397 person(s)	471 person(s)
Nr. infants, aged 9-12 months, not receiving full immunization	23 person(s)	3 person(s)	30 person(s)
% of 9-12 months infants, not receiving full immunization	6 %	1 %	6 %

Note: TBA = Traditional Birth Attendant

3.2.2 Mothers dying within 0 days to 1 month of giving Birth and Infants dying within 1 month in 2008, by Commune

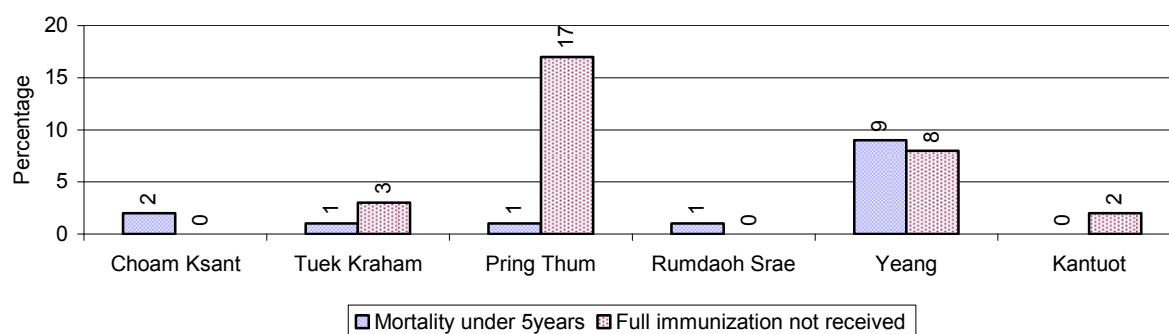


3.2.3 Percentage of Women delivering with a TBA or Midwife, by Commune



Note: Calculated as a percentage of total deliveries

3.2.4 Percentage of Children dying below 5 & of 9-12 months not receiving full Immunization, by Commune, in 2008



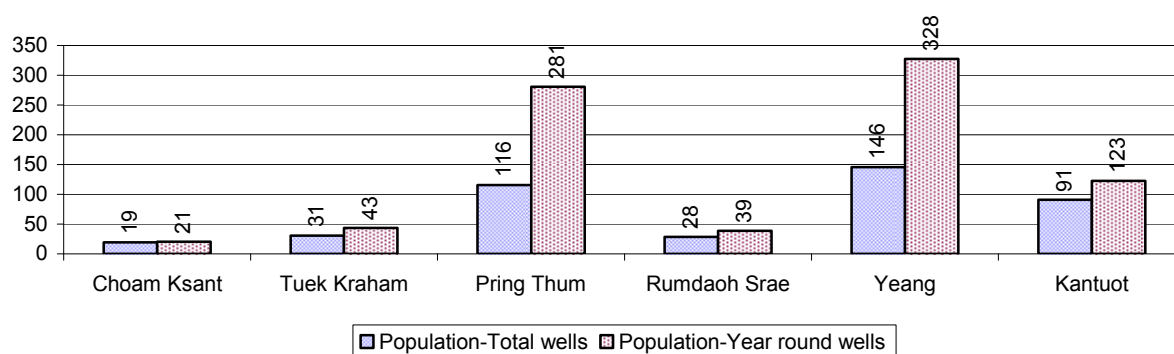
Note: Mortality rate calculated as a percentage of the total 5 year old population. Lack of immunization received calculated as a percentage of the total number 9-12 months olds there are

3.3 Water and Sanitation

3.3.1 Number of different types of Wells over 3 years

Type of wells	Number of wells by year		
	2006	2007	2008
<i>Total number of pumped or mixed wells</i>	199	358	384
Year-round usable pumped or mixed wells	154	254	321
Dry season unusable pump or mixed wells	45	104	63
Pump or mixed wells needing repair/rehabilitation	49	67	97
<i>Total number of ring wells</i>	116	179	226
Year-round usable ring wells	64	125	163
Dry season unusable ring wells	52	54	63
Ring wells needing repair/rehabilitation	38	51	77
<i>Total number of unprotected dug wells</i>	150	132	143
Year-round usable unprotected dug wells	76	57	80
Dry season unusable unprotected dug wells	74	75	63

3.3.2 Ratio of People to Wells, by Commune, in 2008

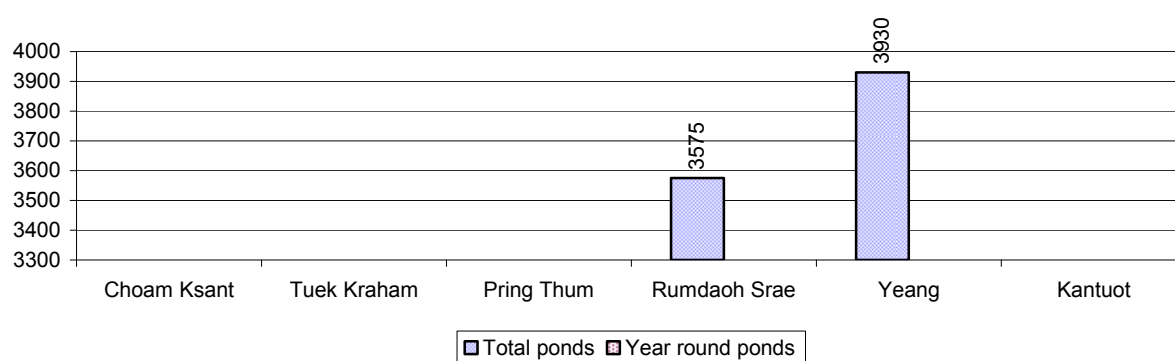


Note: Year-round wells excluding unprotected wells

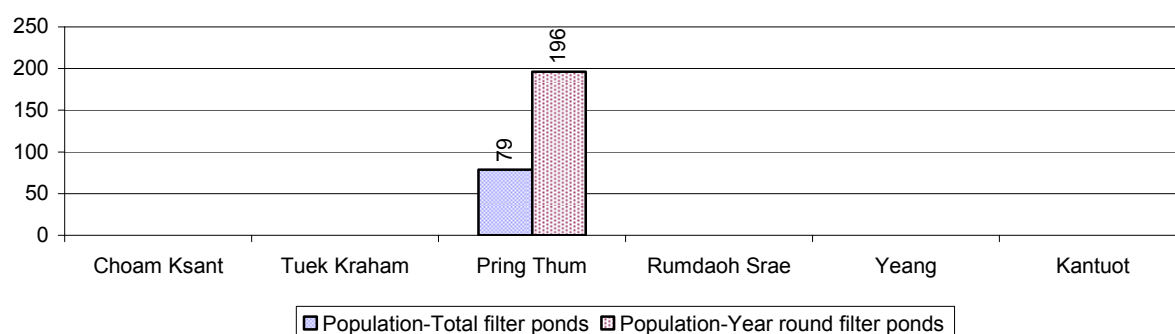
3.3.3 Potable Ponds over 3 years

Type of Pond	2006	2007	2008
<i>Total number of normal-type ponds</i>	32 pond	5 pond	2 pond
Year-round usable normal-type ponds	3 pond	0 pond	0 pond
Dry season unusable normal-type ponds	29 pond	5 pond	2 pond
Normal-type ponds needing repair/rehabilitation	4 pond	4 pond	4 pond
<i>Total number of filter ponds</i>	1 pond	26 pond	25 pond
Year-round usable filter ponds	1 pond	10 pond	10 pond
Filter ponds, dry season unusable	0 pond	16 pond	15 pond
Filter ponds needing repair/rehabilitate	1 pond	1 pond	0 pond

3.3.4 Ratio of People to normal Ponds, by Commune in 2008



3.3.5 Ratio of People to Filter Ponds, by Commune, in 2008

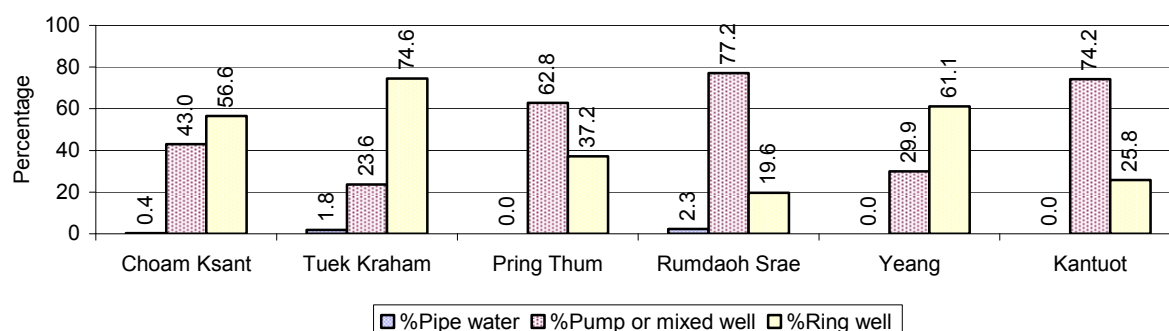


3.3.6 Source of potable Water for Households, over 3 years

Water sources	2006 %	2007 %	2008	
			%	Number
Families using water from purification system	0%	0 %	1 %	38 families
Families using water from pump, mixed wells	56%	60 %	54 %	3,101 families
Families using water from ring wells and open dug wells	43%	39 %	44 %	2,521 families
Families using water from pond	1%	0 %	1 %	80 families
Families using water from rain water storage	0%	0 %	0 %	0 families
Families using water from rivers, lakes, natural ponds and reservoirs	0%	1 %	0 %	0 families

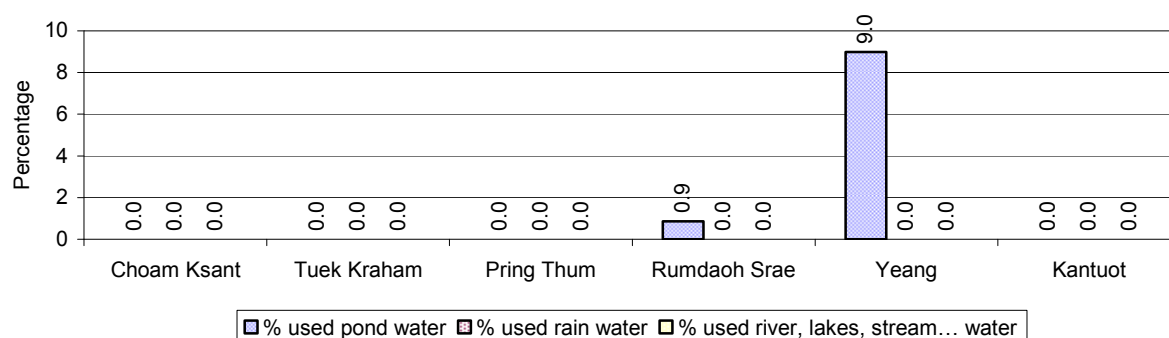
Note: Calculated as a percentage of the total number of families.

3.3.7 Percentage Families using different Water Sources, by Commune, in 2008



Note: Calculated as a percentage of the total number of families in each commune

3.3.8 Percentage Families using Water from Rain Water Storage, Ponds and natural Sources (rivers/lakes/natural ponds/reservoirs), by Commune, 2008



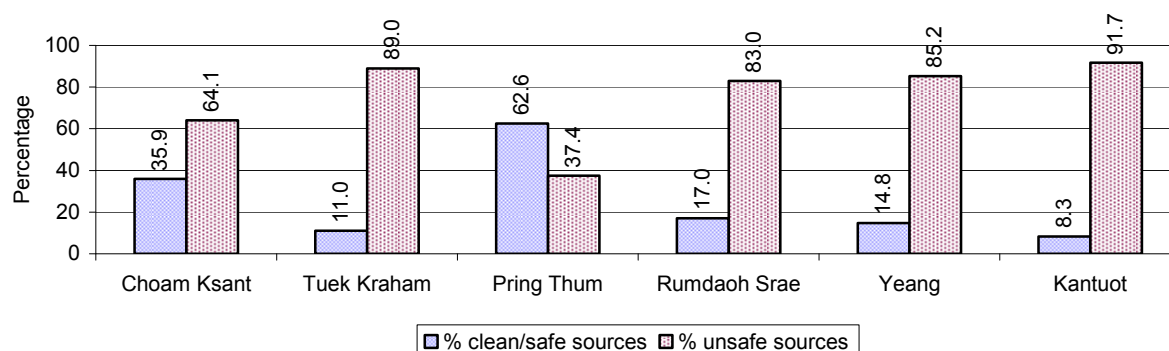
Note: Calculated as a percentage of the total number of families in each commune

3.3.9 Drinking Water Sources in the dry Season over 3 years

Percentage Families that get drinking water from:	2006 %	2007 %	2008	
			%	Number
from clean/safe sources	40 %	6 %	20 %	1,174 families
from unsafe sources	60 %	94 %	80 %	4,566 families

Note: Calculated as a percentage of the total number of families.

3.3.10 Percentage Families using safe and unsafe Water Sources in the dry Season, by Commune, in 2008



Note: Calculated as a percentage of the total number of families in each commune.

3.3.11 Drinking Water Purification by Households, over 3 years

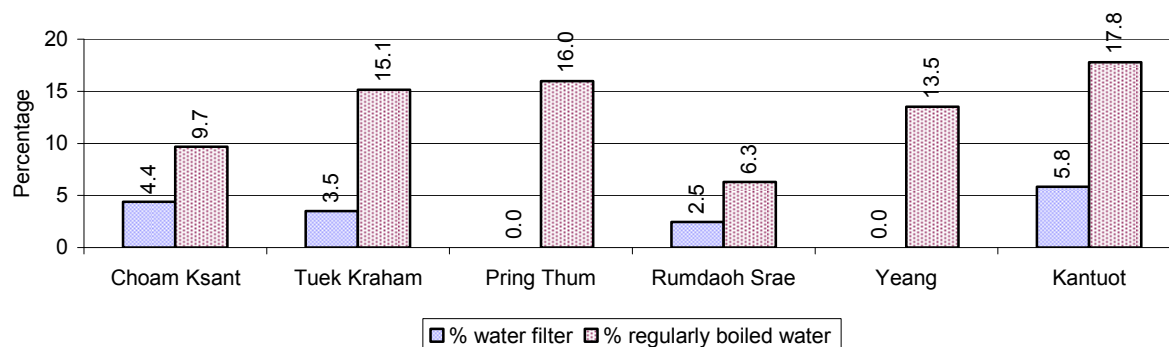
This table shows the different ways families make water safe for drinking.

Families, who:	2006	2007	2008	
	%	%	%	Number
Filter water for drinking	4%	1%	3 %	199 families
Boil water for drinking	10%	9%	13 %	771 families

Note: Calculated as a percentage of the total number of families

3.3.12 Percentage Families filtering Water or regularly boiling Water, by Commune, in 2008

This graph shows the different ways families make drinking water safe.



Note: Calculated on as a percentage of the total number of families in each commune.

3.3.13 Families' access to Water, over 3 years

Families access to water	2006	2007	2008	
	%	%	%	Number
Families with water at home or in less then 150m	62%	34%	19 %	1,109 families
Families with water 150m or more away from home	37%	17%	17 %	981 families

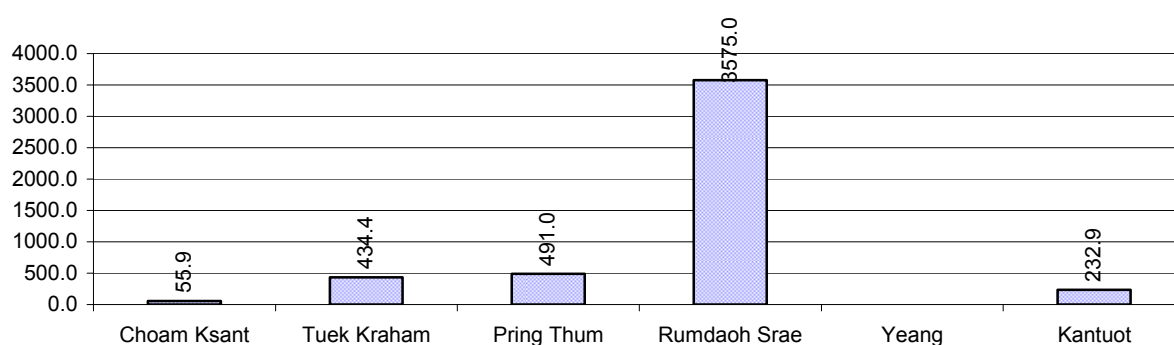
Note: Calculated as a percentage of the total number of families

3.3.14 Ratio of people to Latrines over 3 years

Description	2006	2007	2008	
	Ratio	Ratio	Ratio	Number
Ratio of people to latrines	418.3	313.8	190.7	130.0

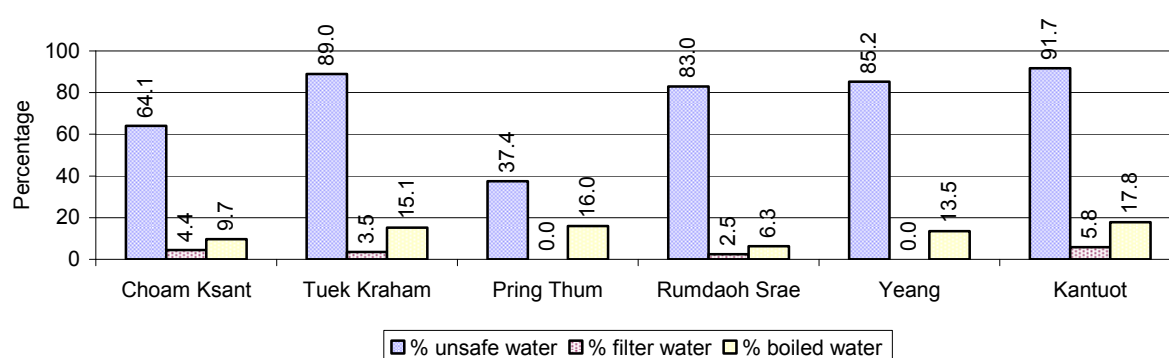
Note: Ratio calculated by dividing the number of houses with latrines by the total population

3.3.15 Ratio of People to Latrines, by Commune, in 2008



Note: Ratio calculated by dividing the number of houses with latrines by the total population in a Commune.

3.3.16 Percentage of Families drinking boiled, filtered or unsafe Water, by Commune, in 2008



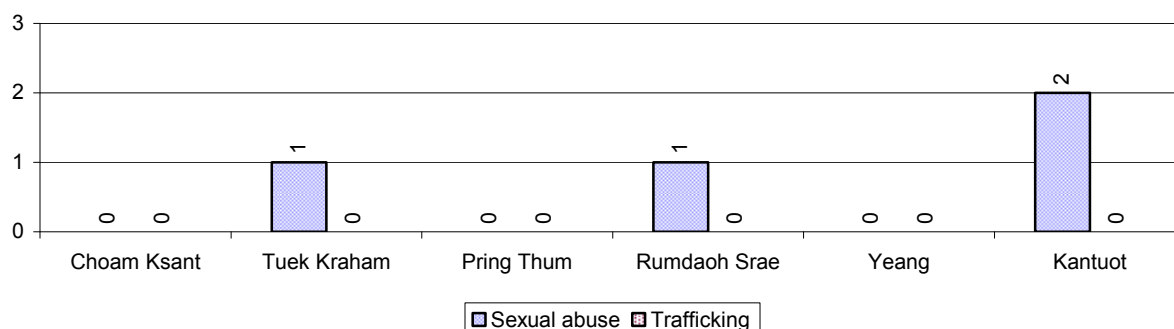
Note: Calculated as a percentage of the total number of families in each commune.

3.4 Vulnerable groups

3.4.1 Vulnerable Groups in need of special Protection over 3 years

Vulnerable groups	2006	2007	2008
Victims of sexual abuse	2 person(s)	0 person(s)	4 person(s)
Victims of human trafficking	0 person(s)	0 person(s)	0 person(s)
Families with family member(s) using drugs	1 families	0 families	0 families
Families with family member(s) living with HIV/AIDS	1 families	1 families	0 families
Children under 18 yrs old whose parent died of AIDS	5 person(s)	13 person(s)	0 person(s)
Orphaned/abandoned children under 18 yrs old (all cases)	76 person(s)	103 person(s)	92 person(s)
Elderly persons without guardian	21 person(s)	17 person(s)	20 person(s)
Disabled people able to earn an income	3 person(s)	5 person(s)	20 person(s)
Disabled people unable to earn an income	30 person(s)	26 person(s)	63 person(s)
Disabled people under 18 yrs old	10 person(s)	5 person(s)	7 person(s)
Victims of natural disasters	110 families	114 families	0 families
Victims of land mines and unexploded weapons	49 person(s)	32 person(s)	39 person(s)

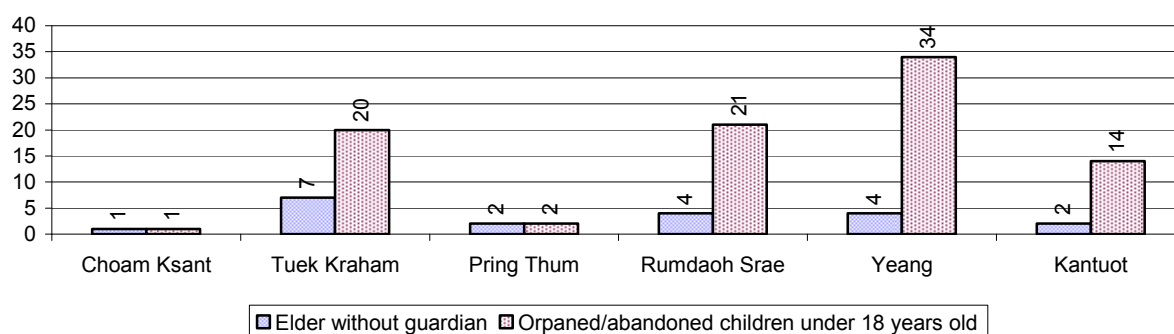
3.4.2 Registered Victims of sexual Abuse or Trafficking, by Commune, for 2008



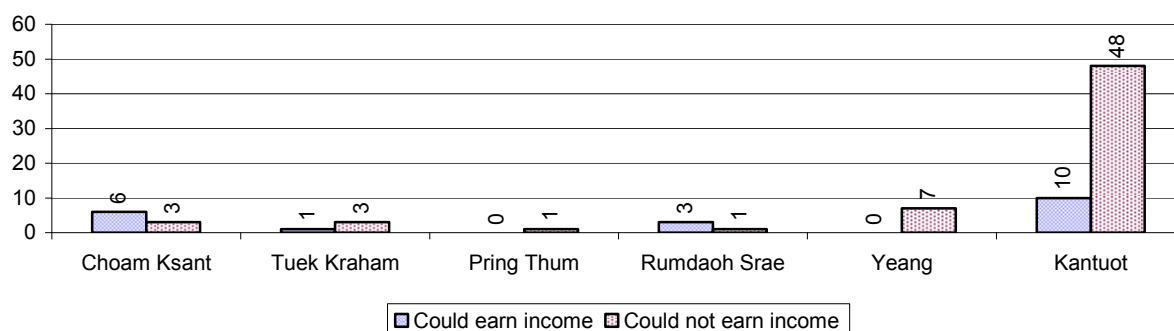
3.4.3 Registered Families with Member(s) using Drugs or living with HIV/AIDS, by Commune, for 2008

There were no Families with Member(s) using Drugs or living with HIV/AIDS in this district in 2008

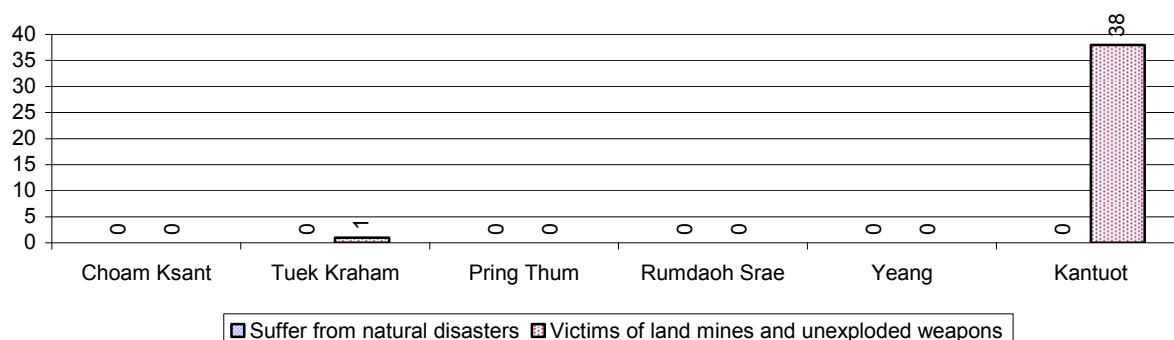
3.4.4 Elderly Persons without a Guardian and orphaned/abandoned Children under 18 years old, by Commune, for 2008



3.4.5 Number of disabled People who could or could not earn an Income, by Commune, for 2008



3.4.6 Number of Families who suffered from natural Disasters, and number of Victims of Land Mines and unexploded Weapons, by Commune, in 2008



3.5 Migration

3.5.1 Migration over 3 years

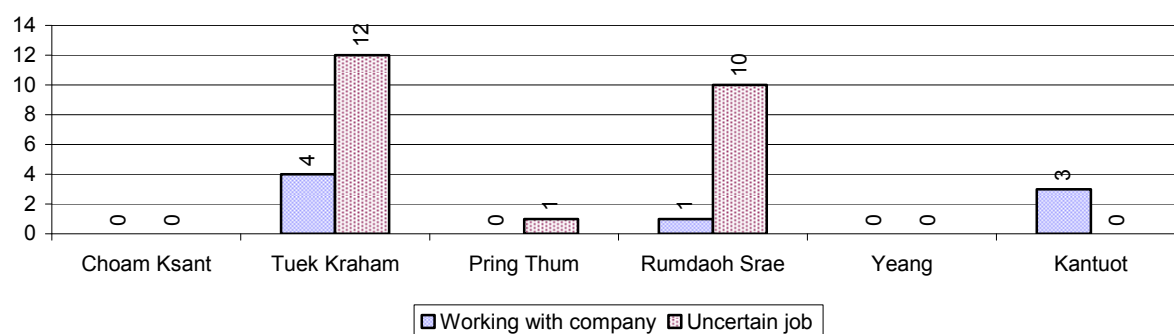
Description	2006	2007	2008
Number of families permanently in-migrated	families	42 families	220 families
Total number of people	338 person(s)	361 person(s)	728 person(s)
Total number of female	200 person(s)	165 person(s)	302 person(s)
Number of families permanently out-migrated	10 families	19 families	57 families
Total number of people	39 person(s)	73 person(s)	156 person(s)
Total number of female	24 person(s)	30 person(s)	69 person(s)
Number of families staying temporarily	21 families	28 families	22 families
Total number of people	74 person(s)	93 person(s)	69 person(s)
Total number of female	36 person(s)	44 person(s)	33 person(s)

3.5.2 Job Migration

Description	2006	2007	2008
Number of people migrated to work with company/factory	0%	0%	0%
Number of people migrated to work, but have uncertain jobs	0%	0%	0%

Note: Calculated as a percentage of the total population of 18-60 year olds

3.5.3 Number of People working outside their home Villages in a Company/Factory or with an uncertain Job in 2008

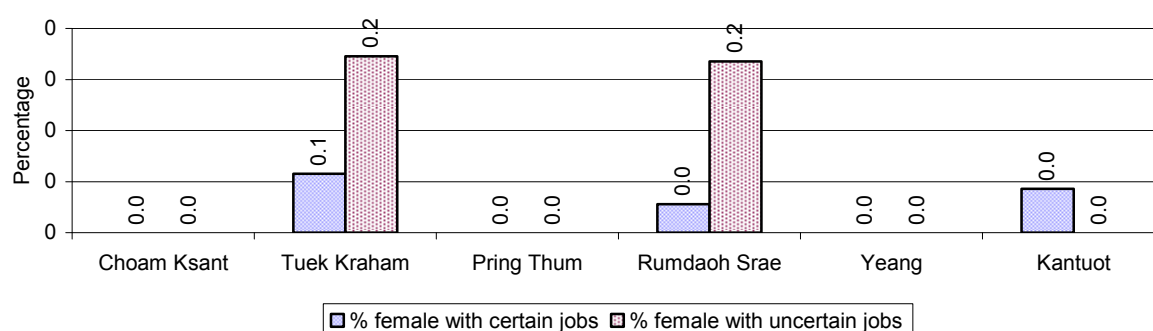


3.5.4 Female migration over 3 years

Description	2006 %	2007 %	2008	
			%	Number
Total number of migrants	0.2%	0.1%	0.1%	31 person(s)
Number of female migrants	0.1%	0.1%	0.1%	18 person(s)
Total number of migrants, who go to work with company/factory (with certain jobs)	0.0%	0.1%	0.0%	8 person(s)
Number of female migrants with certain jobs	0.0%	0.0%	0.0%	6 person(s)
Total number of migrants with uncertain jobs	0.1%	0.1%	0.1%	23 person(s)
Number of female migrants with uncertain jobs	0.1%	0.0%	0.0%	12 person(s)

Note: Calculated as a percentage of the total population

3.5.5 Percentage female Migrants with certain and uncertain Jobs, by Commune, in 2008



Note: Calculated as a percentage of the total population of the commune

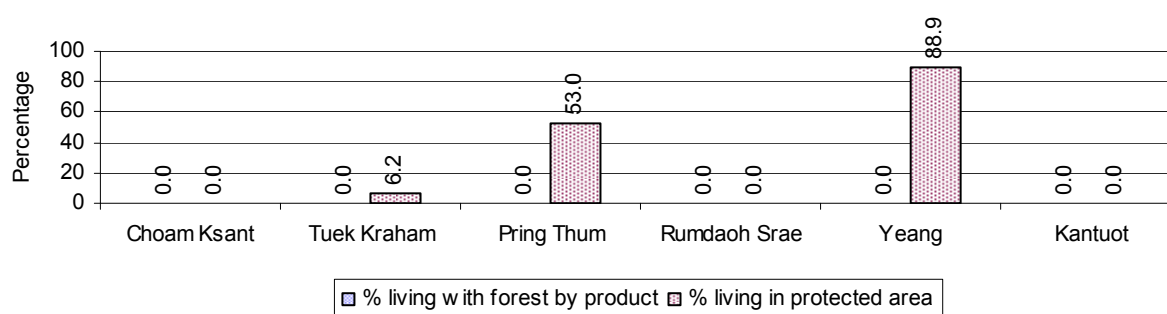
4 Natural Resources and Environment (NRE)

4.1 Families involved with NRE issues over 3 years

Description	2006 %	2007 %	2008	
			%	Number
Families living with forest by products	0 %	0 %	0 %	0 families
Families living in a protected area	13 %	16 %	18 %	1,006 families
Houses with access to garbage collection service	0 %	0 %	0 %	12 families
Families affected by environmental pollution	0 %	0 %	0 %	0 families
Families using chemical fertilizer	0 %	0 %	0 %	4 families
Families using chemical pesticide	0 %	0 %	0 %	5 families

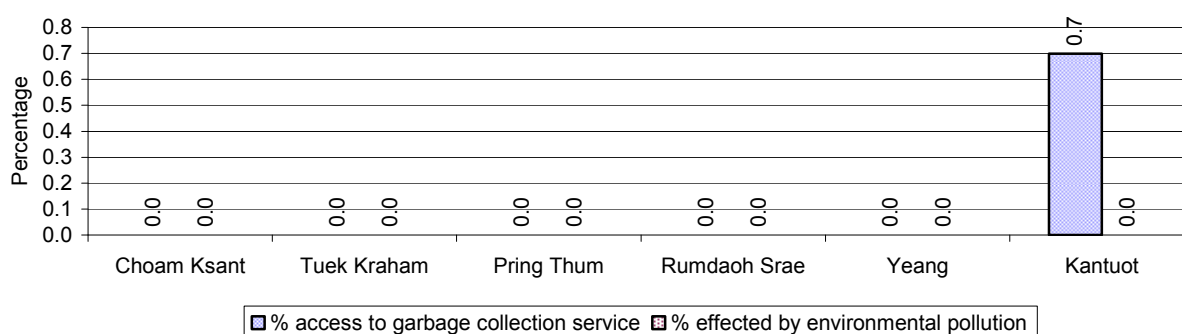
Note: Calculated as a percentage of the total number of families

4.2 Percentage of Families involved with Natural Resource issues, by Commune, for 2008



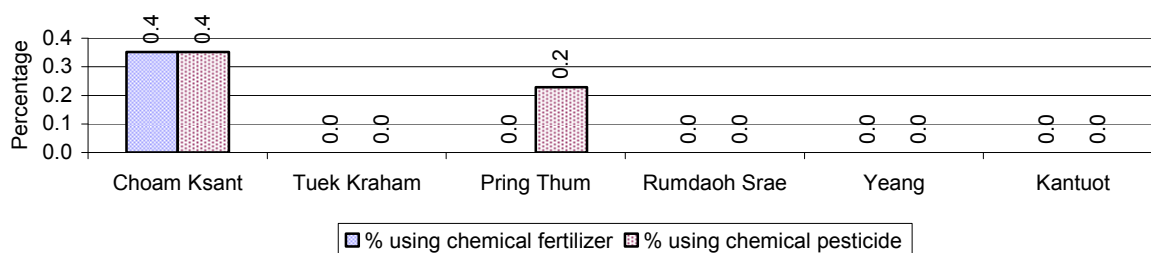
Note: Calculated as a percentage of the number of families in each commune

4.3 Percentage Houses with access to Garbage collection and Families affected by environmental Pollution, by Commune, for 2008



Note: Garbage collection is calculated as a percentage of the total number of houses in each commune and families affected by environmental pollution is calculated as a percentage of the total number of families in each commune.

4.4 Percentage Families using chemical Fertilizer and chemical Pesticides, by Commune, for 2008



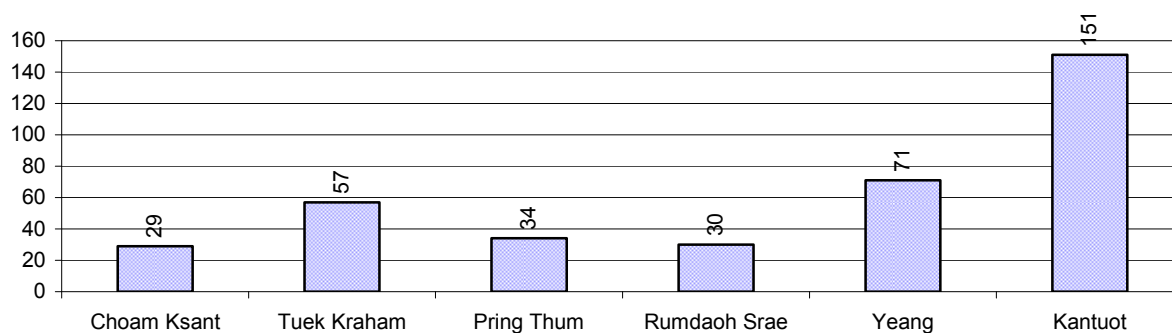
Note: Calculated as a percentage of the total number of families in each commune

5 Administration and Security

5.1 Birth Registration across 3 years

Description	2006	2007	2008
Number of infants to be registered	568 person(s)	573 person(s)	622 person(s)
Number of unregistered infants the year	324 person(s)	308 person(s)	372 person(s)
Percentage of infants unregistered	57 %	54 %	60 %

5.2 Number of unregistered Infants born in 2008, by Commune

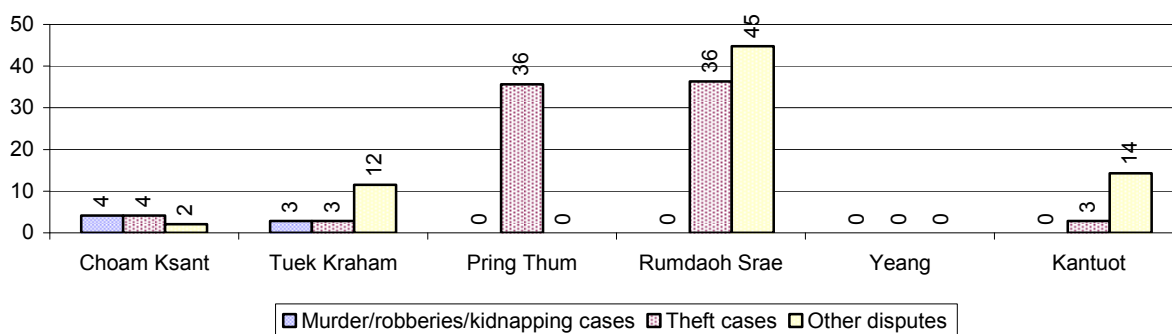


5.3 Registered criminal Cases over 3 years

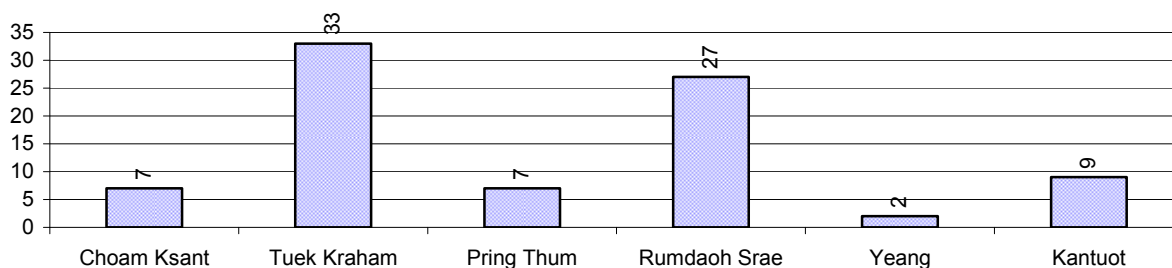
Description	2006	2007	2008
Murders, robberies and kidnapping cases	2 case(s)	2 case(s)	3 case(s)
Theft cases	29 case(s)	22 case(s)	25 case(s)
land dispute cases	35 case(s)	49 case(s)	85 case(s)
Other disputes cases	43 case(s)	52 case(s)	31 case(s)

Note: this reflects only registered criminal cases

5.4 Registered criminal Cases per 10,000 people, by Commune, for 2008



5.5 Number of registered Land Disputes, by Commune, in 2008

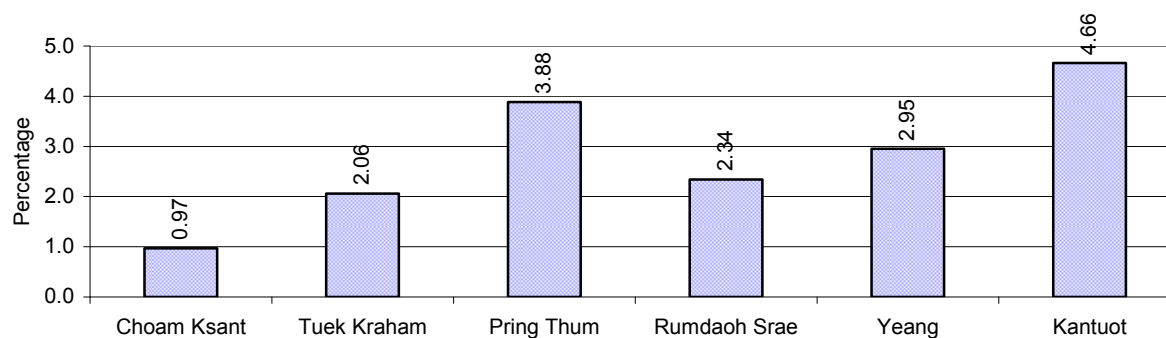


6 Gender

6.1 Registered Domestic Violence over 3 years

Description		2006	2007	2008
Families experiencing domestic violence		145 families	92 families	168 families(s)
% families experiencing domestic violence		3 %	2 %	3 %
Domestic violence cases reported by village chiefs		54 case(s)	78 case(s)	104 case(s)
Type	Physical violence	16 case(s)	33 case(s)	29 case(s)
	Sexual violence	0 case(s)	5 case(s)	20 case(s)
	Mental violence	21 case(s)	27 case(s)	37 case(s)
	Household economic violence	17 case(s)	13 case(s)	18 case(s)
Number of administrative decisions on domestic violence		3 case(s)	28 case(s)	37 case(s)
% of administrative decisions on domestic violence		6 %	36 %	36 %

6.2 Percentage of registered cases of Families experiencing domestic Violence, by Commune, in 2008



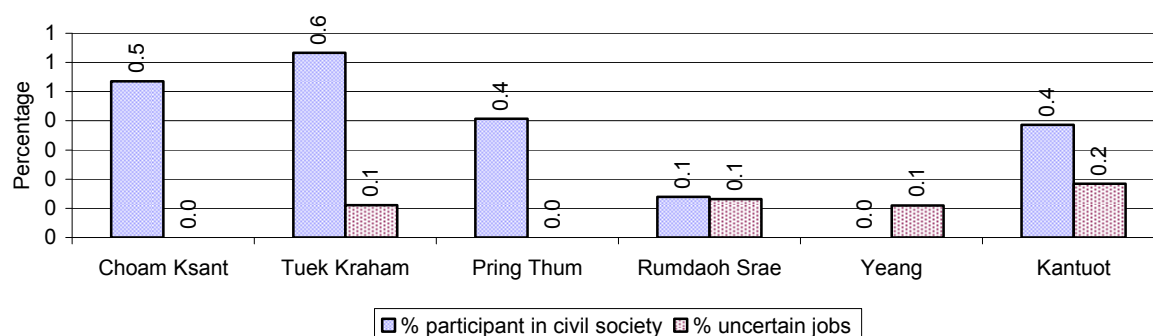
Note: Calculated as a percentage of the total number of families in each commune

6.3 Women's involvement over 3 years

Description	2006 %	2007 %	2008	
			%	Number
People participating in civil society	1%	1%	1%	275 person(s)
Women participating in civil society	0%	0%	0%	88 person(s)
People, 18-60 yrs, with uncertain/irregular jobs	0%	0%	0%	22 person(s)
Women, 18-60 yrs, with uncertain/irregular jobs	0%	0%	0%	12 person(s)

Note: Participation can be in NGOs, CBOs, credit groups, women's unions, parties and other civil society organizations. The first section is calculated as a percentage of the total population. The second section is calculated as a percentage of the total 18-60 year old population.

6.4 Percentage of Female Participants in Civil Society and of 18-60 year women with uncertain Jobs, by Commune, in 2008



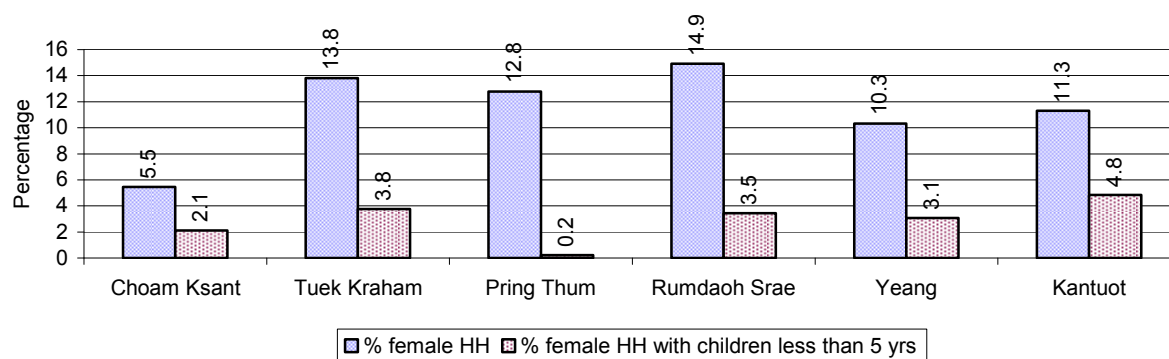
Note: Percentage of female participants in civil society is calculated as a percentage of the total population per commune. The percentage of 18-60 years old women with uncertain jobs is calculated as a percentage of the total 18-60 year old population per commune.

6.5 Female-headed Households over 3 years

Families with:	2006 %	2007 %	2008	
			%	Number
Households in which a woman is the family head	12%	10%	11%	631 families
Households in which a woman is the family head with children of less than 5 yrs	2%	3%	3%	192 families

Note: Calculated as a percentage of the total number of families

6.6 Percentage female-headed Households and with Children of less than 5 years old, by Commune, in 2008



Note: Calculated as a percentage of the total number of families in each commune
HH: Headed Household

7 Indigenous People in the District

7.1 Ethnic Minorities in the District over 3 years

Race of indigenous	2006		2007		2008	
	# families	# population	# families	# population	# families	# population
Phnong	0 families	0 person(s)	0 families	0 person(s)	0 families	0 person(s)
Kouy	52 families	135 person(s)	52 families	130 person(s)	53 families	102 person(s)
Stieng	0 families	0 person(s)	0 families	0 person(s)	0 families	0 person(s)
Mil	0 families	0 person(s)	0 families	0 person(s)	0 families	0 person(s)
Kroal	0 families	0 person(s)	0 families	0 person(s)	0 families	0 person(s)
Thmorn	0 families	0 person(s)	0 families	0 person(s)	0 families	0 person(s)
Khaonh	0 families	0 person(s)	0 families	0 person(s)	0 families	0 person(s)
Tompuonn	0 families	0 person(s)	0 families	0 person(s)	0 families	0 person(s)
Charay	0 families	0 person(s)	0 families	0 person(s)	0 families	0 person(s)
Kroeung	0 families	0 person(s)	0 families	0 person(s)	0 families	0 person(s)
Kavet	0 families	0 person(s)	0 families	0 person(s)	0 families	0 person(s)
Saouch	0 families	0 person(s)	0 families	0 person(s)	0 families	0 person(s)
Lun	0 families	0 person(s)	0 families	0 person(s)	0 families	0 person(s)
Kachak	0 families	0 person(s)	0 families	0 person(s)	0 families	0 person(s)
Praov	0 families	0 person(s)	0 families	0 person(s)	0 families	0 person(s)
Others	0 families	0 person(s)	0 families	0 person(s)	0 families	0 person(s)
Total	52 families	135 person(s)	52 families	130 person(s)	53 families	102 person(s)

Note: "Others" refer to other ethnic groups which are not listed.

7.2 Other Minorities in the District over 3 years

Minority	2006		2007		2008	
	# families	# population	# families	# population	# families	# population
Khmer Islamic	1 families	8 person(s)	1 families	8 person(s)	1 families	3 person(s)
Vietnamese	0 families	0 person(s)	0 families	0 person(s)	0 families	0 person(s)
Laos	0 families	0 person(s)	1 families	1 person(s)	1 families	3 person(s)

Note: Number of indigenous and minority population are additional data, so some village may not recorded.

SECTION C: PLANS AND PROJECTS

8 Priorities and Plans

8.1 Priorities of Commune Councils for 2009 in the District by Sector

The District Priority Activity Matrix (DPAM) data are taken from the CDPD. The DPAM is used for the District Integration Workshop (DIW), to show what kind of projects the commune has proposed in their Commune Investment Plan (CIP) for 2009. Donors, departments and other agencies then consider which projects they want to support and which projects they are not interested in. This results in Temporary Agreements between the Commune Council and the Supporter (NGO, Department, private donor, etc), as shown in table 8.2

No.	Project Name	Choam Ksant 130301	Tuek Kraham 130302	Pring Thum 130303	Rumdaoh Srae 130304	Yeang 130305	Kantuot 130306	Req.Project Total
Economic								
1	Animal vaccination request	1 time		1 time	1 time	7 time		4
2	Village veterinary training				1 training			1
3	Animal raising training				1 training			1
4	Rice seed request	1000 Kg	1000 Kg					2
5	Calf for raising request	80 Head		30 Head	40 Head	30 Head	40 Head	5
6	Sow for raising request	40 Head		40 Head	100 Head	26 Head	40 Head	5
7	Pesticide request		600 bottle					1
8	Chemical fertilizer request		6000 Kg					1
9	Vegetable seed and farming tools request	150 can						1
10	Family fish pond construction		20 Pond					1
11	Fish raising training		1 training					1
12	Fish fingerling request	30000 Head	6000 Head					2
13	Laterite/natural gravel road construction	5000 m						1
14	Culvert construction	10 place	3 place	4 place	6 place	4 place	4 place	6
15	Bridger construction	3 place		1 place		2 place		3
16	Laterite/natural gravel road repairing		1000 m	2000 m	3000 m	3000 m	2000 m	5
17	Water gate construction	2 place	1 place	1 place		4 place		4
18	Irrigation pond construction	8 Pond						1
19	Dam repairing	2 place	300 m	1 place		4 place		4
20	Rice bank establish		6 Team					1
21	Saving group association strengthening		6 Team					1
22	Water pump						4 set	1
Social								
1	Family planning	12 time						1

District Data Book 2009: Development Plans and Projects

No.	Project Name	Choam Ksant	Tuek Kraham	Pring Thum	Rumdaoh Srae	Yeang	Kantuot	Req.Project
		130301	130302	130303	130304	130305	130306	Total
2	Antenatal care service accessibility improvement		6 time					1
3	Transmitting disease prevention education	3 time						1
4	Children immunization provision		2 time					1
5	Mobile health clinic provision	12 time						1
6	Emergency rescue skill training	3 time						1
7	TBA training		1 training	1 training			1 training	3
8	TBA equipment needs		1 time	1 time			1 time	3
9	Mosquito nets distribution/treatment	3045 mosqui-net						1
10	Mosquito larvae removal treatment	2 time						1
11	Health staffs need at health center	7 person						1
12	Medical equipments need for health center	1 set						1
13	Latrine construction	100 toilet	15 toilet	30 toilet	20 toilet			4
14	Commune health center construction	1 building						1
15	Village health post construction		2 place			1 place	2 place	3
16	Water filter equipment supply	50 Container			40 Container			2
17	Pump wells construction	10 well	10 well	3 well	8 well	4 well	20 well	6
18	Ring wells construction	10 well	10 well	6 well	8 well		20 well	5
19	Ponds construction			1 Pond		3 Pond		2
20	Literacy class	4 class	6 class	1 class	4 class		4 class	5
21	Literacy teacher support	4 person	6 person	1 person	4 person		4 person	5
22	Literacy class materials support		6 class		4 class			2
23	School building/furniture	92 set		160 Table	120 Table	240 Table	201 Table	5
24	Junior high school construction			1 building		1 building		2
25	Primary school creation/construction	4 building	3 building	2 building	1 building	2 building	1 building	6
26	Motivating pupil's parents for school enrollment		1 time					1
27	Teacher/volunteer teacher need	27 person	6 person	4 person		12 person	4 person	5
28	School materials support to poor pupils		1 time					1
29	Scholarship provision to poor pupils	1 time	1 time	1 time				3
30	Emergency relief		4 time					1
NREM								
1	Environmental awareness and law education			1 time	4 time		4 time	3

District Data Book 2009: Development Plans and Projects

No.	Project Name	Choam Ksant	Tuek Kraham	Pring Thum	Rumdaoh Srae	Yeang	Kantuot	Req.Project
		130301	130302	130303	130304	130305	130306	Total
2	Fishery law education					6 time		1
3	Forestry law education	4 time	6 time	1 time	4 time	6 time	4 time	6
4	Wildlife protection law education	4 time						1
5	Establishment of NREM protection community					6 Forestry Community		1
6	Community forestry activities support		1 Forestry Community					1
Administration and Security								
1	CC capacity strengthening		1 training					1
2	Land law dissemination	4 time	6 time	1 time	4 time	6 time	4 time	6
3	Provision of land titles/certificates	1 time	1 time	413 doc	1 time	160 doc	1 time	6
4	Land registration dissemination/enforcement			1 time			1 time	2
5	Land use planning				1 time		1 time	2
6	Ammunition and weapons law education	1 time	1 time		1 time			3
Gender								
1	Women & Children FP strengthening	5 person						1
2	Women and men roles/rights dissemination	4 time	6 time			6 time	4 time	4
3	Law against domestic violence dissemination	4 time	6 time	2 time	4 time	6 time	4 time	6
4	Law against trafficking dissemination			2 time				1
5	Protection network for women and children dissemination				4 time			1

Source: CDPD – District Priority Matrix

8.2 Temporary Agreements by Commune, for 2009²

At the District Integration Workshop (DIW) the Supporters (donors, agencies, private donors, NGOs, etc.) identify which projects/activities they would like to support or they put forward their own projects to be implemented in a particular commune. Once there is agreement between Commune Councils and Supporters on specific projects a **Temporary Agreement** is signed by the commune and the Supporter to show their mutual commitment to the identified projects/activities.

It is important to keep in mind that such Temporary Agreements do not necessarily result in implementation.

8.2.1 Temporary Agreements for 2009 as per DIW 2008 for Commune: Choam Ksant

Commune GIS	Commune	Temporary Agreements				Supporter	Funding Source	Listed in CIP befor DIW
		Project Name	Quantity	Unit	Est.Cost (K.Riels)			
Economic								
130301	Choam Ksant	Fish fingerling request	6000	fingerling	0	Church World Service		✓
130301	Choam Ksant	Fish raising training	1	training	0	Church World Service		□
130301	Choam Ksant	Vegetable growing training	18	family	0	Church World Service		□
130301	Choam Ksant	Rice intensification production training	5	person	0	Church World Service		□
130301	Choam Ksant	Routine road maintenance	13	km	0	Department of Rural Development		□
130301	Choam Ksant	Livestock raising technique training	1	training	0	Church World Service		□
130301	Choam Ksant	Rice seed request	750	Kg	0	Church World Service		✓
130301	Choam Ksant	Fruit tree seedling supply	15	family	0	Church World Service		□
130301	Choam Ksant	Chicken raising supply	15	family	0	Church World Service		□
130301	Choam Ksant	Agriculture technique training	4	person	0	The Khmer Institute of Democracy		□
130301	Choam	Water gate construction	1	place	0	Church World Service		✓

² Not all the data from the CDPD has been translated to English, this has resulted in some cells in the TA tables being blank.

District Data Book 2009: Development Plans and Projects

Commune GIS	Commune	Temporary Agreements				Supporter	Funding Source	Listed in CIP befor DIW
		Project Name	Quantity	Unit	Est.Cost (K.Riels)			
	Ksant							
130301	Choam Ksant	Dam repairing	1	place	0	Church World Service		✓
130301	Choam Ksant	Bridge construction	1	place	0	Church World Service		✓
130301	Choam Ksant	Culvert construct	2	place	0	Church World Service		✓
130301	Choam Ksant	Vegetable seed and farming tools request	18	family	0	Church World Service		✓
Social								
130301	Choam Ksant	Transmitting disease prevention education	6	time	0	Church World Service		✓
130301	Choam Ksant	Ring wells construction	2	well	0	Church World Service		✓
130301	Choam Ksant	Pump wells construction	2	well	0	Church World Service		✓
130301	Choam Ksant	Literacy class	2	class	0	Church World Service		✓
130301	Choam Ksant	Scholarship provision to poor pupils	15	person	0	Church World Service		✓
130301	Choam Ksant	KMeragppl;meFüa)aycMeraHTwks¥at	27	Container	0	Church World Service		✓
130301	Choam Ksant	Family planning	3	time	0	Church World Service		✓
130301	Choam Ksant	Ring wells construction	1	well	0	The Khmer Institute of Democracy		✓
130301	Choam Ksant	Latrine construction	8	toilet	0	Church World Service		✓
130301	Choam Ksant	Water filter containers support for school and health center	5	Container	0	Church World Service		□
130301	Choam Ksant	Junior high school teacher supply	1	building	0	Department of Education Youth and Sports		□
130301	Choam Ksant	Water and sanitation education to pupils	1	time	0	Church World Service		□

District Data Book 2009: Development Plans and Projects

Commune GIS	Commune	Temporary Agreements				Supporter	Funding Source	Listed in CIP before DIW
		Project Name	Quantity	Unit	Est.Cost (K.Riels)			
130301	Choam Ksant	Primary school construction	3	building	0	Department of Education Youth and Sports		✓
130301	Choam Ksant	TBA training	1	training	0	Church World Service		□
130301	Choam Ksant	Pump and ring wells repair	3	well	0	Church World Service		□
130301	Choam Ksant	Community learning center construction	1	place	0	Department of Education Youth and Sports		□
130301	Choam Ksant	Literacy class	1	class	0	Department of Education Youth and Sports	PIF	✓
130301	Choam Ksant	Teacher/volunteer teacher need	1	person	0	Department of Education Youth and Sports		✓
Administration and Security								
130301	Choam Ksant	Land law dissemination	3	time	0	Department of Land Management, Urban Planning & Construction	PIF	✓
130301	Choam Ksant	Land law dissemination	1	time	0	The Khmer Institute of Democracy		✓
130301	Choam Ksant	Bicycle support to village facilitator	4	set	0	The Khmer Institute of Democracy		□
130301	Choam Ksant	Land title dissemination workshop	1	time	0	The Khmer Institute of Democracy		□
130301	Choam Ksant	Demining	12	ha	0	Cambodian Mine Action Center		□
130301	Choam Ksant	CC capacity strengthening	1	training	0	Church World Service		□
Gender								
130301	Choam Ksant	International children's day celebration	1	time	0	Church World Service		□
130301	Choam Ksant	White bow day campaign	1	time	0	Church World Service		□
130301	Choam Ksant	Law against domestic violence dissemination	1	training	0	Church World Service		✓

8.2.2 Temporary Agreements for 2009 as per DIW 2008 for Commune: Tuek Kraham

Commune GIS	Commune	Temporary Agreements				Supporter	Funding Source	Listed in CIP before DIW
		Project Name	Quantity	Unit	Est.Cost (K.Riels)			
Economic								
130302	Tuek Kraham	Rice seed request	1000	Kg	0	Church World Service		✓
130302	Tuek Kraham	Vegetable growing training	29	family	0	Church World Service		□
130302	Tuek Kraham	Rice intensification production training	6	person	0	Church World Service		□
130302	Tuek Kraham	Livestock raising technique training	2	training	0	Church World Service		□
130302	Tuek Kraham	Vegetable seeds and agriculture equipment supply	23	family	0	Church World Service		□
130302	Tuek Kraham	Fish fingerling request	6000	fingerling	0	Church World Service		✓
130302	Tuek Kraham	Fish raising training	1	training	0	Church World Service		✓
130302	Tuek Kraham	Water gate construction	1	place	0	Church World Service		✓
130302	Tuek Kraham	Dam repairing	1	m	0	Church World Service		✓
130302	Tuek Kraham	Fruit tree seedling supply	25	family	0	Church World Service		□
130302	Tuek Kraham	Chicken raising supply	25	family	0	Church World Service		□
130302	Tuek Kraham	Agriculture technique training	12	person	0	The Khmer Institute of Democracy		□
130302	Tuek Kraham	Culvert construct	2	place	0	Church World Service		✓
Social								
130302	Tuek Kraham	Latrine construction	14	toilet	0	Church World Service		✓
130302	Tuek Kraham	Ring wells construction	6	well	0	Church World Service		✓
130302	Tuek	TBA training	1	training	0	Church World Service		✓

District Data Book 2009: Development Plans and Projects

Commune GIS	Commune	Temporary Agreements				Supporter	Funding Source	Listed in CIP befor DIW
		Project Name	Quantity	Unit	Est.Cost (K.Riels)			
	Kraham							
130302	Tuek Kraham	Pump wells construction	4	well	0	Church World Service		✓
130302	Tuek Kraham	Ring wells construction	3	well	0	The Khmer Institute of Democracy		✓
130302	Tuek Kraham	Literacy class	2	class	0	Church World Service		✓
130302	Tuek Kraham	Teacher/volunteer teacher need	1	person	0	Department of Education Youth and Sports		✓
130302	Tuek Kraham	Scholarship provision to poor pupils	25	time	0	Church World Service		✓
130302	Tuek Kraham	Water filter equipment support	67	Container	0	Church World Service		□
130302	Tuek Kraham	Literacy day, national celebration	1	time	0	Church World Service		□
130302	Tuek Kraham	Emergency relief preparedness	20	family	0	Church World Service		□
130302	Tuek Kraham	Transmitted disease and prevention awareness education	10	time	0	Church World Service		□
130302	Tuek Kraham	Literacy class	1	class	0	Department of Education Youth and Sports		✓
130302	Tuek Kraham	Water filter containers support for school and health center	1	Container	0	Church World Service		□
130302	Tuek Kraham	Pump and ring wells repair	9	well	0	Church World Service		□
130302	Tuek Kraham	Primary school construction	3	building	0	Department of Education Youth and Sports		✓
130302	Tuek Kraham	Family planning program	5	time	0	Church World Service		□
Administration and Security								
130302	Tuek Kraham	Land law dissemination	1	time	0	The Khmer Institute of Democracy		✓
130302	Tuek Kraham	Land title dissemination workshop	16	time	0	The Khmer Institute of Democracy		□

Commune GIS	Commune	Temporary Agreements				Supporter	Funding Source	Listed in CIP befor DIW
		Project Name	Quantity	Unit	Est.Cost (K.Riels)			
130302	Tuek Kraham	Land law dissemination	3	training	0	Department of Land Management, Urban Planning & Construction	PIF	✓
130302	Tuek Kraham	CC capacity strengthening	1	training	0	Church World Service		✓
130302	Tuek Kraham	Bicycle support to village facilitator	12	set	0	The Khmer Institute of Democracy		□
Gender								
130302	Tuek Kraham	White bow day campaign	1	time	0	Church World Service		□
130302	Tuek Kraham	Law against domestic violence dissemination	1	time	0	Church World Service		✓

8.2.3 Temporary Agreements for 2009 as per DIW 2008 for Commune: Pring Thum

Commune GIS	Commune	Temporary Agreements				Supporter	Funding Source	Listed in CIP before DIW
		Project Name	Quantity	Unit	Est.Cost (K.Riels)			
Social								
130303	Pring Thum	Literacy class	1	class	0	Department of Education Youth and Sports		✓
130303	Pring Thum	Teacher/volunteer teacher need	1	person	0	Department of Education Youth and Sports		✓
Administration and Security								
130303	Pring Thum	Two places demining	18	ha	0	Cambodian Mine Action Center		☐
130303	Pring Thum	Land law dissemination	2	training	0	Department of Land Management, Urban Planning & Construction	PIF	✓

8.2.4 Temporary Agreements for 2009 as per DIW 2008 for Commune: Rumdaoh Srae

Commune GIS	Commune	Temporary Agreements				Supporter	Funding Source	Listed in CIP before DIW
		Project Name	Quantity	Unit	Est.Cost (K.Riels)			
Economic								
130304	Rumdaoh Srae	Fish fingerlings supply	5000	fingerling	0	Church World Service		<input type="checkbox"/>
130304	Rumdaoh Srae	Village veterinary training	1	training	0	Department of Agriculture Forestry and Fisheries		✓
130304	Rumdaoh Srae	Fruit tree seedling supply	20	family	0	Church World Service		<input type="checkbox"/>
130304	Rumdaoh Srae	Chicken raising supply	20	family	0	Church World Service		<input type="checkbox"/>
130304	Rumdaoh Srae	Sow for raising request	50	family	0	Department of Agriculture Forestry and Fisheries		✓
130304	Rumdaoh Srae	Rice intensification production training	4	person	0	Church World Service		<input type="checkbox"/>
130304	Rumdaoh Srae	Rice bank establish/strengthen	2	grange	0	Department of Agriculture Forestry and Fisheries		<input type="checkbox"/>
130304	Rumdaoh Srae	Vegetable seeds and agriculture equipment supply	20	family	0	Church World Service		<input type="checkbox"/>
130304	Rumdaoh Srae	Agriculture technique training	1	training	0	The Khmer Institute of Democracy		<input type="checkbox"/>
130304	Rumdaoh Srae	Animal raising training	1	training	0	Church World Service		✓
130304	Rumdaoh Srae	Rice seed supply	50	family	0	Department of Agriculture Forestry and Fisheries		<input type="checkbox"/>
130304	Rumdaoh Srae	Vegetable seed and farming tools support	50	family	0	Department of Agriculture Forestry and Fisheries		<input type="checkbox"/>
130304	Rumdaoh Srae	Fruit trees seedling support	50	family	0	Department of Agriculture Forestry and Fisheries		<input type="checkbox"/>
130304	Rumdaoh Srae	Chicken and pig raising training	50	family	0	Department of Agriculture Forestry and Fisheries		<input type="checkbox"/>
130304	Rumdaoh Srae	Compost-making training	1	training	0	Department of Agriculture Forestry and Fisheries		<input type="checkbox"/>
130304	Rumdaoh Srae	Rice cultivation technique training	1	training	0	Department of Agriculture Forestry and Fisheries		<input type="checkbox"/>

District Data Book 2009: Development Plans and Projects

Commune GIS	Commune	Temporary Agreements				Supporter	Funding Source	Listed in CIP before DIW
		Project Name	Quantity	Unit	Est.Cost (K.Riels)			
130304	Rumdaoh Srae	Culvert construct	2	place	0	Church World Service		✓
130304	Rumdaoh Srae	Chicken raising supply	50	family	0	Department of Agriculture Forestry and Fisheries		□
130304	Rumdaoh Srae	Vegetable growing training	20	family	0	Church World Service		□
130304	Rumdaoh Srae	Vegetable growing training	1	training	0	Department of Agriculture Forestry and Fisheries		□
130304	Rumdaoh Srae	Funding for emergency relief	50	family	18000	Department of Agriculture Forestry and Fisheries		□
Social								
130304	Rumdaoh Srae	School materials support to poor pupils	20	person	0	Church World Service		□
130304	Rumdaoh Srae	Transmitted disease and prevention awareness education	8	time	0	Church World Service		□
130304	Rumdaoh Srae	Water filter containers support for school and health center	5	Container	0	Church World Service		□
130304	Rumdaoh Srae	Pump and ring wells repair	5	well	0	Church World Service		□
130304	Rumdaoh Srae	Family planning program	4	time	0	Church World Service		□
130304	Rumdaoh Srae	Literacy class	1	class	0	Department of Education Youth and Sports		✓
130304	Rumdaoh Srae	Primary school construction	2	building	0	Department of Education Youth and Sports		✓
130304	Rumdaoh Srae	HIV/AIDS world day organizing	1	time	0	Church World Service		□
130304	Rumdaoh Srae	Ring wells construction	1	well	0	The Khmer Institute of Democracy		✓
130304	Rumdaoh Srae	Water and sanitation education to pupils	1	time	0	Church World Service		□
130304	Rumdaoh Srae	Latrine construction	12	toilet	0	Church World Service		✓
130304	Rumdaoh	Junior high school teacher supply	2	person	0	Department of Education		□

District Data Book 2009: Development Plans and Projects

Commune GIS	Commune	Temporary Agreements				Supporter	Funding Source	Listed in CIP before DIW
		Project Name	Quantity	Unit	Est.Cost (K.Riels)			
	Srae					Youth and Sports		
130304	Rumdaoh Srae	KMeragppl;meFüa)aycMeraHTwks¥at	36	Container	0	Church World Service		✓
130304	Rumdaoh Srae	Ring wells construction	4	well	0	Church World Service		✓
130304	Rumdaoh Srae	Pump wells construction	2	well	0	Church World Service		✓
130304	Rumdaoh Srae	Literacy class	2	class	0	Church World Service		✓
Administration and Security								
130304	Rumdaoh Srae	Land law dissemination	1	time	0	The Khmer Institute of Democracy		✓
130304	Rumdaoh Srae	Land law dissemination	2	training	0	Department of Land Management, Urban Planning & Construction	PIF	✓
130304	Rumdaoh Srae	CC capacity strengthening	1	training	0	Church World Service		□
130304	Rumdaoh Srae	Bicycle support to village facilitator	8	set	0	The Khmer Institute of Democracy		□
130304	Rumdaoh Srae	Land title dissemination workshop	4	time	0	The Khmer Institute of Democracy		□
130304	Rumdaoh Srae	Demining	9	ha	0	Cambodian Mine Action Center		□
Gender								
130304	Rumdaoh Srae	White bow day campaign	1	time	0	Church World Service		□
130304	Rumdaoh Srae	Law against domestic violence dissemination	1	time	0	Church World Service		✓
130304	Rumdaoh Srae	Gender analysis training to commune extension workers	1	training	0	Department of Women		□
130304	Rumdaoh Srae	Gender concept training of trainers	1	training	0	Department of Women		□
130304	Rumdaoh Srae	Gender mainstreaming in agriculture sector reporting training	1	training	0	Department of Women		□

Commune GIS	Commune	Temporary Agreements				Supporter	Funding Source	Listed in CIP before DIW
		Project Name	Quantity	Unit	Est.Cost (K.Riels)			
130304	Rumdaoh Srae	Pictorial materials use training	1	training	0	Department of Women		<input type="checkbox"/>
130304	Rumdaoh Srae	Vocational training to woman target group	1	training	0	Department of Women		<input type="checkbox"/>
130304	Rumdaoh Srae	Food processing skills training	1	training	0	Department of Women		<input type="checkbox"/>
130304	Rumdaoh Srae	International women's day celebration	1	time	0	Church World Service		<input type="checkbox"/>

8.2.5 Temporary Agreements for 2009 as per DIW 2008 for Commune: Yeang

Commune GIS	Commune	Temporary Agreements				Supporter	Funding Source	Listed in CIP befor DIW
		Project Name	Quantity	Unit	Est.Cost (K.Riels)			
Economic								
130305	Yeang	Livestock raising technique training	1	training	0	Church World Service		<input type="checkbox"/>
130305	Yeang	Rice intensification production training	9	person	0	Church World Service		<input type="checkbox"/>
130305	Yeang	Vegetable growing training	30	family	0	Church World Service		<input type="checkbox"/>
130305	Yeang	Fruit trees seedling support	30	family	0	Church World Service		<input type="checkbox"/>
130305	Yeang	Vegetable seed and farming tools support	30	family	0	Church World Service		<input type="checkbox"/>
130305	Yeang	Sow for raising request	26	Head	0	Street Children Association and Development Programme		✓
130305	Yeang	Water gate construction	2	place	0	Church World Service		✓
130305	Yeang	Bridge construction	1	place	0	Church World Service		✓
130305	Yeang	Culvert construct	2	place	0	Church World Service		✓
130305	Yeang	Chicken raising supply	30	family	0	Church World Service		<input type="checkbox"/>
Social								
130305	Yeang	Primary school construction	3	building	0	Department of Education Youth and Sports		✓
130305	Yeang	Teacher/volunteer teacher need	2	person	0	Department of Education Youth and Sports		✓
130305	Yeang	Water filter containers support for school and health center	5	Container	0	Church World Service		<input type="checkbox"/>

District Data Book 2009: Development Plans and Projects

Commune GIS	Commune	Temporary Agreements				Supporter	Funding Source	Listed in CIP before DIW
		Project Name	Quantity	Unit	Est.Cost (K.Riels)			
130305	Yeang	Pond construction	8	family	0	Church World Service		✓
130305	Yeang	TBA training	0		0	Church World Service		<input type="checkbox"/>
130305	Yeang	Literacy class creation/strengthening	6	class	0	Church World Service		<input type="checkbox"/>
130305	Yeang	Ring wells construction	13	well	0	Church World Service		<input type="checkbox"/>
130305	Yeang	Pump and ring wells repair	18	well	0	Church World Service		<input type="checkbox"/>
130305	Yeang	Latrine construction materials supply	16	toilet	0	Church World Service		<input type="checkbox"/>
130305	Yeang	HIV/AIDS world day organizing	1	time	0	Church World Service		<input type="checkbox"/>
130305	Yeang	Culture day organizing	1	training	0	Street Children Association and Development Programme		<input type="checkbox"/>
130305	Yeang	School materials support to poor pupils	6	time	0	Street Children Association and Development Programme		<input type="checkbox"/>
130305	Yeang	School materials support to poor pupils	0		0	Church World Service		<input type="checkbox"/>
130305	Yeang	Literacy class creation/strengthening	1	class	0	Street Children Association and Development Programme		<input type="checkbox"/>
130305	Yeang	Water filter equipment support	54	Container	0	Church World Service		<input type="checkbox"/>
130305	Yeang	Safe water day	1	time	0	Church World Service		<input type="checkbox"/>
130305	Yeang	Water and sanitation education to pupils	1	time	0	Church World Service		<input type="checkbox"/>
130305	Yeang	Transmitted disease and prevention awareness education	12	time	0	Church World Service		<input type="checkbox"/>
130305	Yeang	Family planning program	6	time	0	Church World Service		<input type="checkbox"/>
130305	Yeang	Motivating parents to send their kids to school	6	time	0	Street Children Association and Development Programme		<input type="checkbox"/>
130305	Yeang	Informal primary education school for children	3	class	0	Street Children Association and Development Programme		<input type="checkbox"/>
NREM								
130305	Yeang	Organizing world environmental day	1	training	0	Street Children Association and Development Programme		<input type="checkbox"/>
Administration and Security								
130305	Yeang	CC capacity strengthening	1	time	0	Church World Service		<input type="checkbox"/>
130305	Yeang	Land law dissemination	2	training	0	Department of Land Management, Urban Planning & Construction	PIF	✓
Gender								
130305	Yeang	White bow day campaign	1	time	0	Church World Service		<input type="checkbox"/>

Commune GIS	Commune	Temporary Agreements				Supporter	Funding Source	Listed in CIP before DIW
		Project Name	Quantity	Unit	Est.Cost (K.Riels)			
130305	Yeang	Women & Children FP strengthening	1	training	0	Street Children Association and Development Programme		<input type="checkbox"/>
130305	Yeang	Women and men roles/rights dissemination	2	training	0	Church World Service		✓
130305	Yeang	Woman and children protection network creation and strengthening	1	training	0	Street Children Association and Development Programme		<input type="checkbox"/>
130305	Yeang	International children's day celebration	1	training	0	Street Children Association and Development Programme		<input type="checkbox"/>

8.2.6 Temporary Agreements for 2009 as per DIW 2008 for Commune: Kantuot

Commune GIS	Commune	Temporary Agreements				Supporter	Funding Source	Listed in CIP befor DIW
		Project Name	Quantity	Unit	Est.Cost (K.Riels)			
Economic								
130306	Kantuot	Chicken raising training	50	family	0	Department of Agriculture Forestry and Fisheries		<input type="checkbox"/>
130306	Kantuot	Sow for raising request	50	family	0	Department of Agriculture Forestry and Fisheries		✓
130306	Kantuot	Village veterinary training	2	person	0	Department of Agriculture Forestry and Fisheries		<input type="checkbox"/>
130306	Kantuot	Vegetable seed and farming tools support	50	family	0	Department of Agriculture Forestry and Fisheries		<input type="checkbox"/>
130306	Kantuot	Fruit trees seedling support	50	family	0	Department of Agriculture Forestry and Fisheries		<input type="checkbox"/>
130306	Kantuot	Rice seed supply	50	family	0	Department of Agriculture Forestry and Fisheries		<input type="checkbox"/>
130306	Kantuot	Vegetable growing training	1	training	0	Department of Agriculture Forestry and Fisheries		<input type="checkbox"/>
130306	Kantuot	Compost-making training	1	training	0	Department of Agriculture Forestry and Fisheries		<input type="checkbox"/>
130306	Kantuot	Rice cultivation technique training	1	training	0	Department of Agriculture Forestry and Fisheries		<input type="checkbox"/>
130306	Kantuot	Chicken raising supply	50	family	0	Department of Agriculture		<input type="checkbox"/>

District Data Book 2009: Development Plans and Projects

Commune GIS	Commune	Temporary Agreements				Supporter	Funding Source	Listed in CIP before DIW
		Project Name	Quantity	Unit	Est.Cost (K.Riels)			
						Forestry and Fisheries		
130306	Kantuot	Sow for raising request	26	Head	0	Street Children Association and Development Programme		✓
130306	Kantuot	Rice bank fund support, rice storehouse building, rice bank formation/strengthening	2	place	0	Department of Agriculture Forestry and Fisheries		□
130306	Kantuot	Funding for emergency relief	50	family	17600	Department of Agriculture Forestry and Fisheries		□
Social								
130306	Kantuot	Teacher/volunteer teacher need	3	person	0	Department of Education Youth and Sports		✓
130306	Kantuot	Peer children and parent education training	1	training	0	Department of Tourism		□
130306	Kantuot	Culture day organizing	1	training	0	Street Children Association and Development Programme		□
130306	Kantuot	Teacher/volunteer teacher need	1	person	0	Department of Education Youth and Sports		✓
130306	Kantuot	Literacy class	1	class	0	Department of Education Youth and Sports		✓
130306	Kantuot	School materials support to poor pupils	6	time	0	Street Children Association and Development Programme		□
130306	Kantuot	Motivating parents to send their kids to school	6	time	0	Street Children Association and Development Programme		□
130306	Kantuot	Informal primary education school for children	3	class	0	Street Children Association and Development Programme		□
130306	Kantuot	Literacy class	2	class	0	Street Children Association and Development Programme		✓
130306	Kantuot	English course training	1	class	0	Street Children Association and Development Programme		□
NREM								
130306	Kantuot	Organizing world environmental day	1	training	0	Street Children Association and Development Programme		□
Administration and Security								
130306	Kantuot	Demining	53	ha	0	Cambodian Mine Action Center		□

District Data Book 2009: Development Plans and Projects

Commune GIS	Commune	Temporary Agreements				Supporter	Funding Source	Listed in CIP before DIW
		Project Name	Quantity	Unit	Est.Cost (K.Riels)			
130306	Kantuot	Land law dissemination	3	training	0	Department of Land Management, Urban Planning & Construction	PIF	✓
Gender								
130306	Kantuot	International children's day celebration	1	training	0	Street Children Association and Development Programme		<input type="checkbox"/>
130306	Kantuot	Gender mainstreaming among local people	1	training	0	Department of Women		<input type="checkbox"/>
130306	Kantuot	Gender analysis training to commune extension workers	1	training	0	Department of Women		<input type="checkbox"/>
130306	Kantuot	Gender concept training	1	training	0	Department of Women		<input type="checkbox"/>
130306	Kantuot	Gender mainstreaming in agriculture sector reporting training	1	training	0	Department of Women		<input type="checkbox"/>
130306	Kantuot	Pictorial materials use training	1	training	0	Department of Women		<input type="checkbox"/>
130306	Kantuot	WCFPs capacity and courageousness strengthening forum	1	training	0	Department of Women		<input type="checkbox"/>
130306	Kantuot	Woman and children protection network creation and strengthening	1	training	0	Street Children Association and Development Programme		<input type="checkbox"/>
130306	Kantuot	Sewing skills training for girls	1	class	0	Street Children Association and Development Programme		<input type="checkbox"/>
130306	Kantuot	Women & Children FP strengthening	1	training	0	Street Children Association and Development Programme		<input type="checkbox"/>
130306	Kantuot	Food processing skills training	1	training	0	Department of Women		<input type="checkbox"/>

Source: CDPD, District Level Detail TA resulting from DIW

8.3 Outputs, estimated and actual costs of C/S Fund Projects between 2005 and 2008, by Commune

Commune	Project Type	Budget Year	Output		Quantity	Unit	Unit Cost MR	
			Description	Type			Estimate	Actual
Choam Ksant	Rural Transport	2005	Laterite road	Upgrade	1.2	Km	22.75	26.20
Choam Ksant	Rural Transport	2005	Single pipe culvert	New	2	Place	3.59	26.20
Choam Ksant	Rural Transport	2006	Double pipe culvert	New	1	Place	4.73	4.00
Choam Ksant	Rural Transport	2006	Laterite road	Repair	1.461	Km	23.04	22.90
Choam Ksant	Rural Transport	2007	Laterite road	Repair	1.286	Km	26.06	26.10
Choam Ksant	Rural Transport	2007	Single pipe culvert	New	2	Place	3.59	26.10
Choam Ksant	Rural Transport	2008	Laterite road	Repair	0.911	Km	23.10	31.00
Choam Ksant	Rural Transport	2008	Double pipe culvert	New	1	Place	3.63	31.00
Choam Ksant	Rural Transport	2008	Single pipe culvert	New	2	Place	4.68	31.00
Tuek Kraham	Rural Transport	2005	Triple pipe culvert	New	0	Place	6.83	17.00
Tuek Kraham	Rural Transport	2005	Laterite road	Upgrade	0.434	Km	17.20	17.00
Tuek Kraham	Rural Transport	2006	Double pipe culvert	New	1	Place	4.85	28.42
Tuek Kraham	Rural Transport	2006	Wood bridge, 5 tonne standard, concrete abutments	New	1	Place	23.49	28.42
Tuek Kraham	Rural Transport	2006	Single pipe culvert	New	2	Place	3.60	28.42
Tuek Kraham	Rural Transport	2006	Single pipe culvert	New	3	Place	3.60	4.58
Tuek Kraham	Rural Transport	2007	Laterite road	Repair	0.663	Km	20.38	23.57
Tuek Kraham	Rural Transport	2007	Single pipe culvert	New	3	Place	5.88	23.57
Tuek Kraham	Rural Transport	2008	Laterite road	Repair	0.543	Km	26.66	54.30
Tuek Kraham	Rural Transport	2008	Single pipe culvert	New	1	Place	2.90	54.30
Tuek Kraham	Rural Transport	2008	Triple pipe culvert	New	1	Place	8.34	54.30
Tuek Kraham	Rural Transport	2008	Laterite road	New	0.335	Km	16.45	54.30
Pring Thum	Rural Domestic Water Supplies	2005	Drilled well with Afridev pump	New	8	Place	35.54	36.00
Pring Thum	Rural Domestic Water Supplies	2006	Drilled well with Afridev pump	New	6	Place	30.05	35.13
Pring Thum	Rural Transport	2007	Laterite road	Repair	2.204	Km	46.87	53.87
Pring Thum	Rural Transport	2007	Single pipe culvert	New	8	Place	14.35	53.87
Pring Thum	Rural Transport	2008	Single pipe culvert	New	10	Place	27.69	93.00
Pring Thum	Rural Transport	2008	Laterite road	Repair	2.734	Km	65.68	93.00
Rumdaoh Srae	Rural Transport	2005	Laterite road	Upgrade	0.885	Km	20.83	25.40
Rumdaoh Srae	Rural Transport	2005	Single pipe culvert	New	1	Place	1.80	25.40
Rumdaoh Srae	Rural Transport	2005	Double pipe culvert	New	1	Place	2.93	25.40
Rumdaoh Srae	Rural Transport	2006	Single pipe culvert	New	1	Place	1.73	26.60
Rumdaoh Srae	Rural Transport	2006	Laterite road	Repair	1.45	Km	22.13	26.60
Rumdaoh Srae	Rural Transport	2006	Double pipe culvert	New	1	Place	2.92	26.60

Commune	Project Type	Budget Year	Output		Quantity	Unit	Unit Cost MR	
			Description	Type			Estimate	Actual
Rumdaoh Srae	Rural Transport	2007	Single pipe culvert	New	4	Place	7.18	24.70
Rumdaoh Srae	Rural Transport	2007	Laterite road	Repair	0.718	Km	20.61	24.70
Rumdaoh Srae	Rural Transport	2008	Laterite road	Repair	0.63	Km	23.88	32.09
Rumdaoh Srae	Rural Transport	2008	Single pipe culvert	New	3	Place	8.31	32.09
Yeang	Rural Domestic Water Supplies	2006	Drilled well with Afridev pump	New	9	Place	54.21	52.50
Yeang	Rural Domestic Water Supplies	2007	Pond with no filter	New	3	Place	33.28	29.00
Yeang	Rural Transport	2008	Laterite road	Repair	0.66	Km	30.66	32.80
Yeang	Rural Transport	2008	Single pipe culvert	New	2	Place	5.54	32.80
Kantuot	Rural Transport	2005	Laterite road	Upgrade	0.001	Km	41.55	43.22
Kantuot	Rural Transport	2005	Single pipe culvert	New	0.001	Place	1.68	43.22
Kantuot	Rural Transport	2006	Laterite road	Upgrade	1.9	Km	41.55	43.00
Kantuot	Rural Transport	2006	Laterite road	New	1.43	Km	24.70	26.99
Kantuot	Rural Transport	2006	Single pipe culvert	New	1	Place	1.88	26.99
Kantuot	Rural Transport	2006	Single pipe culvert	New	1	Place	1.68	43.00
Kantuot	Rural Transport	2007	Single pipe culvert	New	3	Place	5.94	23.90
Kantuot	Rural Transport	2007	Laterite road	Repair	1.1	Km	20.32	23.90

Source: PID

8.4 Total Expenditure on C/S Fund Projects by sector and commune between 2005 and 2008

Sector	Total Cost in Million Riels					
	Choam Ksant	Tuek Kraham	Pring Thum	Rumdaoh Srae	Yeang	Kantuot
Rural Domestic Water Supplies			36.00		81.50	
Rural Transport	110.20	104.30	93.00	108.79	32.80	93.89

Source: PID

8.5 Actual 2009 C/S Fund projects by Commune

Commune	Project Type	Project Output		Quantity	Unit	Fund Source (Riels)		
		Description	Type			Total	C/S	Local Contribution
Choam Ksant	Rural Transport	Laterite road	Repair	1.122	km	42,790,400	41,840,400	950,000
Choam Ksant	Rural Transport	Single pipe culvert 0.6m diameter	New	2	Place	42,790,400	41,840,400	950,000
Tuek Kraham	Rural Transport	Laterite road	Repair	0.69	km	39,610,503	39,010,503	600,000
Tuek Kraham	Rural Transport	Single pipe culvert 0.6m diameter	New	5	Place	39,610,503	39,010,503	600,000
Pring Thum	Rural Transport	Laterite road	Repair	0.675	km	37,467,400	37,217,400	250,000
Pring Thum	Rural Transport	Single pipe culvert 0.6m diameter	New	4	Place	37,467,400	37,217,400	250,000
Rumdaoh Srae	Rural Transport	Laterite road	Repair	0.556	km	33,308,580	32,708,580	600,000
Rumdaoh Srae	Rural Transport	Single pipe culvert 0.6m diameter	New	3	Place	33,308,580	32,708,580	600,000
Yeang	Rural Transport	Laterite road	Repair	0.815	km	41,501,700	40,825,700	676,000
Yeang	Rural Transport	Single pipe culvert 0.6m diameter	New	3	Place	41,501,700	40,825,700	676,000
Kantuot	Rural Transport	Laterite road	Repair	2.1	km	80,730,550	80,230,550	500,000
Kantuot	Rural Transport	Single pipe culvert 0.6m diameter	New	8	Place	80,730,550	80,230,550	500,000

Source: PID

9 District level Projects from 2006 to 2009

District Initiative Projects (DIPs) are funded by Danida, DFID and PSDD (UNDP, DFID and SIDA).

Funding for 2006-2008

Between 2006 and 2008 there were 14 provinces funded by PSDD and 10 by Danida and DFID. The list of provinces and who funded these is below

Danida and DFID funded DIPs:

Kampong Cham	Kampong Speu	Koh Kong	Kratie	Monduliri
Pursat	Ratanakiri	Siem Reap	Sihanoukville	Kep

PSDD funded DIPs:

Banteay Meanchey	Battambang	Kampong Chhnang	Kandal	Phnom Penh
Prey Veng	Svay Rieng	Takeo	Kampong Thom	Preah Vihear
Stung Treng	Kampot	Oddar Meanchey	Pailin	

Funding for 2009

In 2009 there was a change to the number of provinces funded by the two streams. Danida and DFID were still funding the same 10 provinces they had been funding the previous three years, but two more provinces were added *Kampong Thom and Kampot*. Now PSDD funds 12 provinces and Danida and DFID fund 12.

9.1 District Initiative Infrastructure Projects from 2006 to 2009

9.1.1 District Initiative Infrastructure Projects for 2006 to 2008

No District Initiative Infrastructure Projects were implemented in this district for 2006-2008

9.1.2 District Initiative Infrastructure Projects in 2009

No District Initiative Infrastructure Projects have been implemented in this district for 2009

9.2 District Initiative Service Projects from 2006 to 2009

9.2.1 District Initiative Service Projects for 2006 to 2008

No District Initiative Service Projects were implemented in this district for 2006-2008

9.2.2 District Initiative Service Projects in 2009

No District Initiative Service Projects have been implemented in this district for 2009

9.3 Inter Commune Council Projects in 2008 and 2009

9.3.1 ICC Projects in 2008

No ICC projects in this district at this time

9.3.2 ICC Projects in 2009

No ICC projects in this district at this time

Source: ICC project, Ministry of Interior (DoLA), -UNDP project for Local Governance – DDLG

9.4 Other Projects in 2008 and 2009

9.4.1 RPRP

There are no RPRP projects being implemented in this district or province at this time. The RPRP is only being implemented in Svay Rieng and Prey Veng

9.4.1.1 RPRP Projects from 2006 to 2008

No RPRP projects in this district at this time

9.4.1.2 RPRP Projects in 2009

No RPRP projects in this district at this time

9.4.2 Seth Korma

9.4.2.1 Seth Korma 2007

There are no Seth Korma projects being implemented in this district or province at this time.

Source: UNICEF

9.4.2.2 Seth Koma 2008

There are no Seth Koma projects being implemented in this district or province at this time.

Source: UNICEF

9.4.2.3 Seth Koma 2009

There are no Seth Koma projects being implemented in this district or province at this time.

Source: UNICEF

SECTION D: SERVICES AND ORGANIZATIONS

10 Infrastructure

10.1 Length of and Expenditure on Roads in 2008, by District

Roads	PVR	Chey Sen	Chheb	Choam Khsant	Kuleaen	Rovieng	Sangkom Thmey	Tbaeng Meanchey	Preah Vihear
Length of paved road in the district	16	0	0	0	0	0	0	0	16 km
Length of unpaved roads in the district	667	142	n/a	64	53	408	n/a	n/a	n/a
Amount spent on construction of roads in 2008 (\$)	516,360	32,227	148,191	60,796	51,195	97,483	60,633	46,295	19,540
Amount spent on repair and rehabilitation of roads in 2008 (\$)	16,731	0	0	0	0	0	0	0	16,731

Note 1: Please note that these data are not necessarily complete or correct. The data are derived from government agencies at provincial and district level which used different recording systems, did not always have complete data or were, sometimes, less than willing to share their data.

Note 2: Please be aware that these data are incomplete due to the fact that the amounts for the construction, repair and rehabilitation recorded reflect only funds provided by the government, not the contributions by any other parties.

10.2 Scale of and Expenditure on Irrigation in 2008, by District

Irrigation	PVR	Chey Sen	Chheb	Choam Khsant	Kuleaen	Rovieng	Sangkom Thmey	Tbaeng Meanchey	Preah Vihear
Number of irrigation schemes operating in 2008	2	n/a	n/a	n/a	1	n/a	n/a	n/a	1
Total nr of hectares under irrigation in dry season 2008	22	n/a	n/a	n/a	22	n/a	n/a	n/a	n/a
Total funds spent in 2008 on construction of irrigation systems (\$)	-	n/a	n/a	n/a	n/a	n/a	n/a	n/a	n/a
Total funds spent in 2008 on rehabilitation/repair of irrigation systems (\$)	-	n/a	n/a	n/a	n/a	n/a	n/a	n/a	n/a
Total funds spent in 2008 on operation and maintenance (\$)	-	n/a	n/a	n/a	n/a	n/a	n/a	n/a	n/a

Note 1: Please note that these data are not necessarily complete or correct. The data are derived from government agencies at provincial and district level which used different recording systems, did not always have complete data or were, sometimes, less than willing to share their data.

Note 2: Please be aware that the data above are incomplete as these only reflect funds provided by the government, not the contributions by farmers or other parties.

10.3 Power Supply in 2008, by District

Electricity	PVR	Chey Sen	Chheb	Choam Khsant	Kuleaen	Rovieng	Sangkom Thmey	Tbaeng Meanchey	Preah Vihear
Total number of electricity connections to households	2,297	0	0	365	0	350	0	0	1,582
Total number of electricity connections to agencies, companies, organizations	52	0	0	0	0	0	0	0	52
Total volume in KWh of electricity consumed last in 2008	521,085	0	0	18,700	0	17,600	0	0	484,785
Total amount collected from users for consumed electricity (\$)	363,530	0	0	18,700	0	17,600	0	0	327,230
Per capita electricity consumption in 2008 in Kwh	16	0	0	1	0	0	0	0	35

Note 1: Please note that these data are not necessarily complete or correct. The data are derived from government agencies at provincial and district level which used different recording systems, did not always have complete data or were, sometimes, less than willing to share their data.

Note 2: These data only record electricity provided by electricity companies and does not include homes powered by generators or batteries (for this information see Section B: General Profile, Part 1: General Information; table 1.3.1 and chart 1.3.4).

Note 3: *In most provinces electricity is only provided through town-based networks*

Note 4: *Per capita consumption is calculated by dividing the total volume of electricity produced in 2008 by the number of people living in each district as per the 2008 census (for the provincial data it is calculated against the number of people living in the province)*

11 Health Facilities

Please note that the Operational District (health) boundaries are different to the administrative district boundaries. Therefore the data provided here shows the facilities, staff, NGOs etc in each Operational District within the province NOT the administrative district.

Acronyms

Com Cov	Commune Covered	MW2	Secondary Midwives
CPA	Complementary Package of Activities	NU1	Primary Nurse
Dr	Doctor	NU2	Secondary Nurse
FDH	Former District Hospital	OD	Operational District
HC	Health Center	Others	Other Staff
HC (NB)	Health Center no building	PHD	Provincial Health Department
HP	Health Post	Pop 04-05	Population Covered 2004 or 2005
MA	Medical Assistant	RH	Referral Hospital
MPA	Minimum Package of Activities	Vil Cov	Village Covered
MW1	Primary Midwives	VIL-HC	Distance from Village to Health Center

11.1 Health Facilities in the Province, by Operational District

Preah Vihear	OD	RH	HC	HP
Preah Vihear	1	1	13	19
Total	1	1	13	19

11.2 Health Facilities and Staff in the province, by Operational District

This table shows health facilities, staff and coverage of health facilities in each operational district.

No	Facility Name	Type	Class	Dr	Ma	Nu2	Nu1	Mw2	Mw1	Others	Com Cov	Vil Cov	Pop. 04-05
Preah Vihear													
1	Boribo	HC	MPA	0	0	2	1	0	1	0	2	6	4,384
2	Chamraeun	FDH	MPA	0	0	2	6	0	2	4	4	22	13,739
3	Chhaeb	FDH	MPA	0	0	1	6	0	4	8	8	26	13,978
4	Chhnuon	HC	MPA	0	0	2	6	1	2	1	3	11	5,355
5	Choam Ksant	FDH	MPA	0	1	0	4	1	3	1	4	16	11,379
6	Chrach	HC(NB)	None	0	0	0	0	0	0	0	3	12	8,800
7	Kou Len	FDH	MPA	0	0	0	4	1	3	1	5	18	14,716
8	Phnom Dek	HC	MPA	0	0	3	1	0	3	1	3	15	9,132
9	Putrea	HP	Nil	0	0	0	0	0	0	0	1	1	
10	Ro Vieng	FDH	MPA	0	0	3	2	0	2	1	6	31	16,651
11	Saang	FDH	MPA	0	0	5	6	0	6	0	3	9	8,560
12	Sra'aem	HC	MPA	0	0	2	3	1	2	0	1	7	4,155
13	Tbaeng Mean chey	HC	MPA	0	0	2	5	0	1	0	6	32	23,814
Total:				0	1	22	44	4	29	17	49	206	134,663

Source: MEDiCAM – Infrastructure - (http://www.medicam-cambodia.org/hsi/health_system/srch/index.asp?cboLcn=6&cmdSearch=Search&cboCHName=&cboType=)

11.3 Deliveries in 2007 in the Province, by Operational District

OD	Deliveries	Deliveries at home		Deliveries	Total deliveries	Total deliveries
	at HC	By Health Staff	ByTBAs	at RH	by Health Staff	by health staff and TBAs
Tbeng Meanchey	1019	343	1450	326	1688	3138
<i>Sub-total</i>	<i>1019</i>	<i>343</i>	<i>1450</i>	<i>326</i>	<i>1688</i>	<i>3138</i>

Source: MoH, Annual Statistics 2007

12 Education³

12.1 Schools, Classes, Students, Staff, for all levels, for 2007/2008 by District

District	Number of Schools	Disadv. Schools	Number of Classes	Classes in Pagoda	Enrollment		Repeaters		Teaching Staff		Non-Teaching Staff		Total Staff	
					Total	Girl	Total	Girl	Total	Female	Total	Female	Total	Female
Chey Sen	23	2	144	0	5,280	2,467	749	322	89	16	22	4	111	20
Chheb	27	1	144	3	4,135	1,888	982	442	94	10	6	0	100	10
Choam Ksan	29	3	164	2	4,852	2,409	689	305	105	35	19	7	124	42
Koulen	33	0	161	6	5,966	2,875	806	379	125	27	24	3	149	30
Rovieng	49	1	300	2	9,512	4,582	1,381	578	262	105	42	7	304	112
Sangkum Thmei	26	4	130	0	4,453	2,206	677	327	91	15	17	2	108	17
Tbeng Meanchey	28	0	221	4	8,376	3,862	783	344	238	115	70	24	308	139
Whole Province	215	11	1,264	17	42,574	20,289	6,067	2,697	1,004	323	200	47	1,204	370
- Urban Area	28	0	221	4	8,376	3,862	783	344	238	115	70	24	308	139
- Rural Area	98	7	574	2	19,245	9,255	2,807	1,227	442	136	81	13	523	149
- Remote Area	89	4	469	11	14,953	7,172	2,477	1,126	324	72	49	10	373	82

12.2 Characteristics of Schools and School Principals for 2007/2008 by Commune

Commune	Number of Schools				2 - Shift	Floating	Schools	Attached	Schools Without			Characteristics of School Principals (Incharge)			
	Pre-Sch	Primary	College	Lycee	Schools	Schools	in Pagoda	Pre-Sch	Water Sup.	Latrine		Avg. Age	Avg. Service	U.Sec+ Ed.	Female
Choam Ksant	1	4	1	1	1	0	0	1	2	3		46.3	21.1	1	3
Tuek Kraham	0	3	0	0	1	0	0	0	3	3		34.7	8.7	0	0
Pring Thum	0	2	1	0	2	0	0	0	2	1		44.8	22.7	0	0
Rumdaoh Srae	0	2	1	0	2	0	0	0	2	2		46.5	21.7	0	0
Yeang	0	6	0	0	5	0	0	0	4	4		39.0	18.0	0	0
Kantuot	0	6	1	0	3	0	0	0	4	6		34.0	13.0	0	0

³ All the data for section 12 comes from the Ministry of Education, Youth and Sport (MoEYS)

12.3 Enrolment by Level of Education, 2006/2007 by Commune

Commune	School	Pre school		Primary School		Lower Secondary School		Upper Secondary School		Enrolment	
		Total	Female	Total	Female	Total	Female	Total	Female	Total	Female
Choam Ksant	7	50	26	1373	692	411	184	71	24	1905	926
Tuek Kraham	3	0	0	187	74	0	0	0	0	187	74
Pring Thum	2	0	0	368	195	0	0	0	0	368	195
Rumdaoh Srae	3	0	0	579	280	76	38	0	0	655	318
Yeang	6	0	0	873	437	0	0	0	0	873	437
Kantuot	6	0	0	941	431	0	0	0	0	941	431

12.4 Enrolment by Level of Education, 2007/2008 by Commune

Commune	School	Pre school		Primary School		Lower Secondary School		Upper Secondary School		Enrolment	
		Total	Female	Total	Female	Total	Female	Total	Female	Total	Female
Choam Ksant	7	36	15	1200	622	468	221	114	45	1818	903
Tuek Kraham	3	0	0	200	86	0	0	0	0	200	86
Pring Thum	3	0	0	363	204	45	17	0	0	408	221
Rumdaoh Srae	3	0	0	470	234	106	62	0	0	576	296
Yeang	6	0	0	832	429	0	0	0	0	832	429
Kantuot	7	0	0	972	454	46	20	0	0	1018	474

12.5 Aspects of Enrolment for 2007/2008 by Commune

Commune	% Repeaters (Total)			% Over-age Enrollment (Total)			% Repeaters (Girl)			% Over-age Enrollment (Girl)		
	Primary	L.Sec.	U.Sec.	Primary	L.Sec.	U.Sec.	Primary	L.Sec.	U.Sec.	Primary	L.Sec.	U.Sec.
Choam Ksant	14.8	1.3	0.0	28.1	62.0	50.9	10.1	0.9	0.0	26.7	60.2	33.3
Tuek Kraham	25.5	0.0	0.0	40.5	0.0	0.0	23.3	0.0	0.0	31.4	0.0	0.0
Pring Thum	17.1	0.0	0.0	37.2	51.1	0.0	15.2	0.0	0.0	38.7	35.3	0.0
Rumdaoh Srae	19.4	0.0	0.0	33.4	70.8	0.0	19.2	0.0	0.0	33.8	69.4	0.0
Yeang	18.8	0.0	0.0	38.6	0.0	0.0	18.6	0.0	0.0	37.5	0.0	0.0
Kantuot	14.9	0.0	0.0	39.2	63.0	0.0	14.1	0.0	0.0	39.4	65.0	0.0

12.6 School Buildings for all schools in the District for 2007/2008, by Commune

Commune	Total Number of		Concrete/Brick Structure		Wooden Structure		Bamboo Structure		New Buildings		Buildings Without Good		
	Buildings	Rooms	Buildings	Rooms	Buildings	Rooms	Buildings	Rooms	Repaired	Constructed	Floor	Roof	Wall
Choam Ksant	10	44	6	31	3	12	1	1	1	0	1	1	3
Tuek Kraham	3	7	0	0	1	2	2	5	0	0	0	0	0
Pring Thum	5	13	2	8	3	5	0	0	0	0	2	1	2
Rumdaoh Srae	6	18	2	6	3	11	1	1	1	0	1	1	3
Yeang	7	18	3	10	1	2	3	6	1	2	3	1	2
Kantuot	7	24	5	20	2	4	0	0	1	0	3	2	2

12.7 Conditions of Classrooms and Existence of Separate School Office and Library, by Commune

Commune	Number of Class rooms	Number of Classrooms			Classrooms Without Good			Number of Furniture needed				Schools with Separate	
		in Pagoda	New Repaired	New Constr.	Floor	Roof	Wall	Desks	Chairs	Black-board	Teacher Table	Office	Library
Choam Ksant	40	0	0	0	0	0	4	120	78	7	10	2	2
Tuek Kraham	7	0	0	0	0	0	0	0	10	1	2	0	0
Pring Thum	9	0	0	0	4	2	4	20	0	1	3	2	0
Rumdaoh Srae	13	2	2	0	2	2	7	68	55	5	4	1	1
Yeang	16	0	3	4	7	3	4	150	150	3	6	3	1
Kantuot	19	0	2	0	6	4	4	20	2	4	4	2	0

12.8 Community Participation and Financing across all schools in the District for 2007/2008 by Commune

Commune	Parent Association				Comm. Teachers	Teaching Monks	PAP Fund (Riel)		Number of Schools Obtaining Funds from				
	Exists	Held Meet	Total	Female			per Student	per School	Sch. Income	Community	Gvt. For building	Abroad	IOs/NGOs
Choam Ksant	6	5	6	2	0	0	11,646	3,086,271	0	0	0	0	0
Tuek Kraham	3	3	6	1	0	0	14,791	922,000	0	0	0	0	0
Pring Thum	2	2	13	4	0	0	11,560	2,127,000	0	0	0	0	0
Rumdaoh Srae	3	3	8	2	0	0	13,556	2,959,733	0	0	0	0	0
Yeang	4	4	7	2	0	0	11,043	1,606,817	0	0	0	0	0
Kantuot	6	6	5	1	0	0	7,428	1,165,017	0	0	0	0	0

12.9 Percentage Student Flow Rates and Graduation by level 2006/2007, by Commune

Commune	Primary Level (Grades 1-6)			Lower Secondary Level (Grades 7-9)			Upper Secondary Level (Grades 10-12)			Successful Candidates		
	Promotion	Repetition	Dropout	Promotion	Repetition	Dropout	Promotion	Repetition	Dropout	Grade 6	Grade 9	Grade 12
Choam Ksant	75.4	13.0	11.7	78.6	1.5	20.0	78.9	0.0	21.1	175	72	0
Tuek Kraham	67.4	27.3	5.3	0.0	0.0	0.0	0.0	0.0	0.0	0	0	0
Pring Thum	77.4	16.8	5.7	0.0	0.0	100.0	0.0	0.0	0.0	32	0	0
Rumdaoh Srae	63.7	15.7	20.6	90.8	0.0	9.2	0.0	0.0	0.0	40	0	0
Yeang	74.0	17.9	8.1	0.0	0.0	0.0	0.0	0.0	0.0	52	0	0
Kantuot	81.7	15.4	2.9	0.0	0.0	0.0	0.0	0.0	0.0	71	0	0

13 Staff and Resources at the District

This chapter presents data from the District Information System, collected around the middle of 2009 unless otherwise specified.

13.1 District Councilors elected in 2009

Name	Sex	Year of Birth	Function	Phone
កៅ សុផ	M	01-12-1950	Chairperson of The Council	012-678 607
ទី គឹមសុន	M	01-01-1947	Councillor	017-972 206
ហែម ថុន	M	15-02-1957	Councillor	011-203 872
ថោង សុំឡើន	M	20-06-1947	Councillor	097-975 7680
ឯម យុវន្តា	F	03-04-1957	Councillor	
ថេត គឹមហៀង	M	24-03-1953	Councillor	099-610 734
លឹម នឹម	M	05-10-1951	Councillor	092-878 705
ថោង ថោន	M	05-10-1949	Councillor	
សុទ្ធ អ៊ុត្តារា	M	25-05-1963	Councillor	085-380 392
រស់ ផឹង	M	04-04-1972	Councillor	017-412 545
ផ្លូវ មុយហាង	M	03-05-1949	Councillor	017-856 770

13.2 Committees of the Council

Please note at the time of producing the district data books the composition of the committees was not known for all district councils and therefore data were not available for 13.2.1, 13.2.2, 13.2.3.

13.2.1 Technical Facilitation Committee

13.2.2 Women's and Children's Affairs Committee

13.2.3 Procurement Committee

13.3 Board of Governors

Name	Sex	DoB	Function	Salary Level	Body	Phone
រស់ ហេង	M	01-05-1964	District Governor	ក៣.១២	High Ranking Civil Servant	092-799 227
ក្រុង សម្បត្តិ	M	09-11-191971	District Deputy Governor		Policeman	012-302 661
ព្រំ វណ្ណា	F	06-02-1970	District Governor	គ១.៦	Secretary	011-566 232

13.4 Offices under Sala Krong, Sala Srok and Sala Khan

Office Name	Chief		Deputy Chief		No. of Staff				Office Area (m2)	No of vehicle (public or program)	
					State		Contract			vehicle	moto
	M	F	M	F	M	F	M	F			
District/ Khan Cabinet	1	0	0	0	0	0	0	0	0	0	1
Adminnistration Office	1	0	1	0	4	1	0	0	0	0	0
Economy Office	0	0	0	1	3	1	0	0	0	0	0
Social Affair Office	0	1	0	0	2	0	0	0	0	0	0

13.5 Municipality/District/Khan line offices

Office Name	Chief		Deputy Chief		No. of Staff				Office Area (m2)	No of vehicle (public or program)	
					State		Contract				
	M	F	M	F	M	F	M	F		vehicle	moto
District/ Khan Police Headquarter	1	0	4	0	70	3	0	0	258.75	0	8
District/ Khan Military Police Headquarter	1	0	2	0	4	0	0	0	60	0	0
Rural Development Office	1	0	0	0	0	0	0	0	Borrow	0	1
Women Affairs Office	0	1	0	0	0	0	0	0	Borrow	0	0
Environment Office	1	0	1	0	0	0	0	0	Borrow	0	0
Education Office	1	0	2	0	88	46	13	18	108	0	0
Agriculture Office	0	1	0	0	2	0	0	0	Borrow	0	2
Culture Office	1	0	1	0	0	0	0	0	Borrow	0	0
Cult and Religion Office	1	0	0	0	0	0	0	0	Borrow	0	0
Information Office	1	0	0	1	0	0	0	0	Borrow	0	0
Public Work Office	1	0	0	0	0	0	0	0	Borrow	0	1
Lan Management Office	1	0	0	0	0	0	0	0	Borrow	0	0

13.6 Properties and Equipment of District Administration

13.6.1 Buildings

Description	Unit	Number	Remark
Office building type			
- Concrete	building	0	
- Wood	building	2	
- Mixed	building	0	
Total floor space	m2		
- Concrete	m2	0	
- Wood	m2	172.5	
- Mixed	m2	0	
Building condition			
- Concrete	%	0	
- Wood	%	20	
- Mixed	%	0	
Office reserved land area	m2	0	
Total office land area	m2	2,600	

13.6.2 Means of Transport available at the District Administration

Description	Unit	Number	Remark
Vehicle (type, size and condition)	Vehicle	0	
Motorcycle (type, size and condition)	Motor	1	

13.6.3 Equipment in District Offices

Description	Unit	Number	Remark
Generator	per set	1	
Photocopy machine at the office	per set	0	
Private photocopy machine at the district town	place	2	
Telephone network (mobile line service)	network	4	
Telephone network (land line service)	network	0	
Fax (include Fax number)	per set	0	
Computer	per set	1	
Printer	per set	0	
Scanner	Per set	0	
Number of computers those can access Internet and email services in the municipality/ district/khan office (including the technical line offices (please provide the email address)	set	0	
Typewriters (including the technical line offices)	per set	0	
Staff of Municipality/district/khan office can use computer	person	1	

13.6.4 Equipment and facilities at the District Town

Description	Unit	Number	Remark
Availability of electricity at noon	Nr Hours	0	
Private internet and email services in the municipality/ district/khan town.	place	0	

13.7 Registered Revenue of the District Administration in 2008⁴

Sources of Revenue	Revenue Collecting Agency	Estimated annual revenue (In Riels)
Slaughter Hosue	Salakhet	1,200,000
Tax imposed on merchants	Salakhet	1,200,000

13.8 Services in the District**13.8.1 Public Sector Services**

Type of Infrastructure/services	Unit	Number	
		Public	Private
Schools			
Pre-school	room		
Primary School	room	95	0
Secondary school	room	33	0
High School	room	6	0
University	room		
Health			
Health post	place	3	0
Health center	place	3	0
Referral Hospital	bed		

⁴ Please note that the data in this table are at best estimates. If the table appears blank it does not mean there is no revenue, just that the data have not been recorded/entered.

13.9 Civil Society Organizations active in the District

13.9.1 NGOs, Associations, Programs and Projects

Name	Abbr.	Sector Activities	No. of Target Communes	No. of Target Villages	Office in District
NA	NA	កសិកម្ម អភិវឌ្ឍន៍ សុខាភិបាល	4	12	No
NA	CWS	កសិកម្ម អភិវឌ្ឍន៍ អប់រំ សុខាភិបាល កសាងសន្តិភាព	4	18	Yes
NA	NA	កសិកម្ម អភិវឌ្ឍន៍ អប់រំ	3	13	Yes
NA	NA	អប់រំ កសិកម្ម និងសុខាភិបាល	2	10	Yes
NA	NA	ព្រៃឈើ សត្វព្រៃ ទេសចរណ៍	1	1	Yes

13.9.2 Political Parties active in the Municipality, District and Khan

Name	Abbr.	Office in District
Cambodian People Party	CPP	Yes
FUNCINPEC Party	FUNCINPEC	Yes
SAM RAINSY Party	Sam Rainsy Party	Yes

13.10 Private Sector Organizations

13.10.1 Registered Companies in 2008, by District

On private sector at commune and/or district level	PVR	Chey Sen	Chheb	Choam Khsant	Kuleaen	Rovieng	Sangkom Thmey	Tbaeng Meanchey	Preah Vihear
Businesses and Companies									
Number of registered agricultural enterprises (except family farms)	2	0	0	0	0	2	0	0	0
Number of registered shops, restaurants, transporters and other services	2,672	288	237	471	428	531	155	317	218
Number of manufacturing companies	78	6	3	0	25	12	11	2	19
Number of registered forestry enterprises	-	0	0	0	0	0	0	0	0
Number of registered mining companies	-	0	0	0	0	0	0	0	0
Number of fin/ancial institutions	8	0	0	1	2	2	0	0	3
Number of other commercial institutions	-	0	0	0	0	0	0	0	0
Estimated number of informal enterprises (not registered)	n/a	n/a	n/a	n/a	n/a	n/a	n/a	n/a	n/a
Employment									
Number of people employed in 2008 by companies or any other enterprises	n/a	n/a	n/a	n/a	n/a	n/a	n/a	n/a	n/a
Investment									
Amount invested in 2008 by private sector (\$)	n/a	n/a	n/a	n/a	n/a	n/a	n/a	n/a	n/a
Markets									
Number of markets, operating at least weekly	12	0	1	6	2	1	1	0	1

Note: These data are not comprehensive as different companies and business are registered with different departments and not all departments were able or willing to provide detailed information. The number of informal enterprises reflects a rough estimate, made at provincial level and could not be verified.

Source: Unofficially collected at Provincial Level

13.10.2 Farmers in 2008, by District

Credit	PVR	Chey Sen	Chheb	Choam Khsant	Kuleaen	Rovieng	Sangkom Thmey	Tbaeng Meanchey	Preah Vihear
Volume of credit provided to farmers in 2008 (\$)	4,237,244	311,010	5,500	325,444	723,875	800,975	167,020	1,897,920	5,500
Number of farmers receiving credit in 2008	3,582	451	50	385	614	1,129	270	683	50
Volume of credit provided to companies in 2008 (\$)	n/a	n/a	n/a	n/a	n/a	n/a	n/a	n/a	n/a

Note: Please note that these data are not necessarily complete or correct. The data are derived from government agencies at provincial and district level which used different recording systems, did not always have complete data or were, sometimes, less than willing to share their data.

Source: Unofficially collected at Provincial Level

SECTION E: POVERTY DATA

14 Data on Poverty

14.1 Predicted Poverty Rates for 2009, by commune

The **Predicted Family Poverty Rate** is based on a statistical model (robust multilevel mixed effect regression) at village level developed by the NCDD M&E Unit and uses CDB data for making an estimate of the predicted poverty rate (this is: *the portion of total families in the district or commune who are expected to be poor*) for the following year using current year data.

The basis for this predicted poverty rate also uses IDPoor (a project of the Ministry of Planning with technical assistance provided by GTZ) data

Commune	2004	2009
Choam Ksant	44.90%	42.10%
Tuek Kraham	51%	42.50%
Pring Thum	47.80%	45.60%
Rumdaoh Srae	46.90%	44.50%
Yeang	55.10%	48.50%
Kantuot	51.90%	48.30%

14.2 Poverty data from survey

14.2.1 Identification of Poor Households Program (IDPoor)

The Ministry of Planning IDPoor Program has developed standardized Procedures for Identification of Poor Households in rural areas. These Procedures are implemented using a participatory and consultative process by sub-national government structures and community representatives.

The IDPoor Program is managed by the Ministry of Planning (MOP), in cooperation with the Ministry of Interior's Department of Local Administration (DOLA). The program is supported by the Federal Republic of Germany, with technical assistance provided by German Technical Cooperation (GTZ). In 2009, AusAID also provided funding support to the Program.

Objective

The IDPoor Program aims to implement the Procedures for Identification of Poor Households in rural areas as widely as possible, in order to provide data on the level of poverty of areas and households that can be used by a large range of institutions and organizations for targeting services and development assistance to poor areas and poor households.

Coverage: During 2007, 2008 and 2009 the IDPoor Procedures have been implemented in 18 provinces (with partial or complete coverage), covering a total of around 7000 rural villages. The MOP and a number of NGO partners who are Health Equity Fund Operators have collaborated in collecting this data from different areas.

Categorization: Identified poor households are classified under two poverty categories: Poor Level 1 (very poor), and Poor Level 2 (poor). Households are classified based on data collected using a standard questionnaire, together with consideration by villagers of these households' special circumstances.

Further information: Please go to the IDPoor Program webpage at www.mop.gov.kh/Projects/IDPoor/tabid/154/Default.aspx

This District has not yet been covered by IDPoor